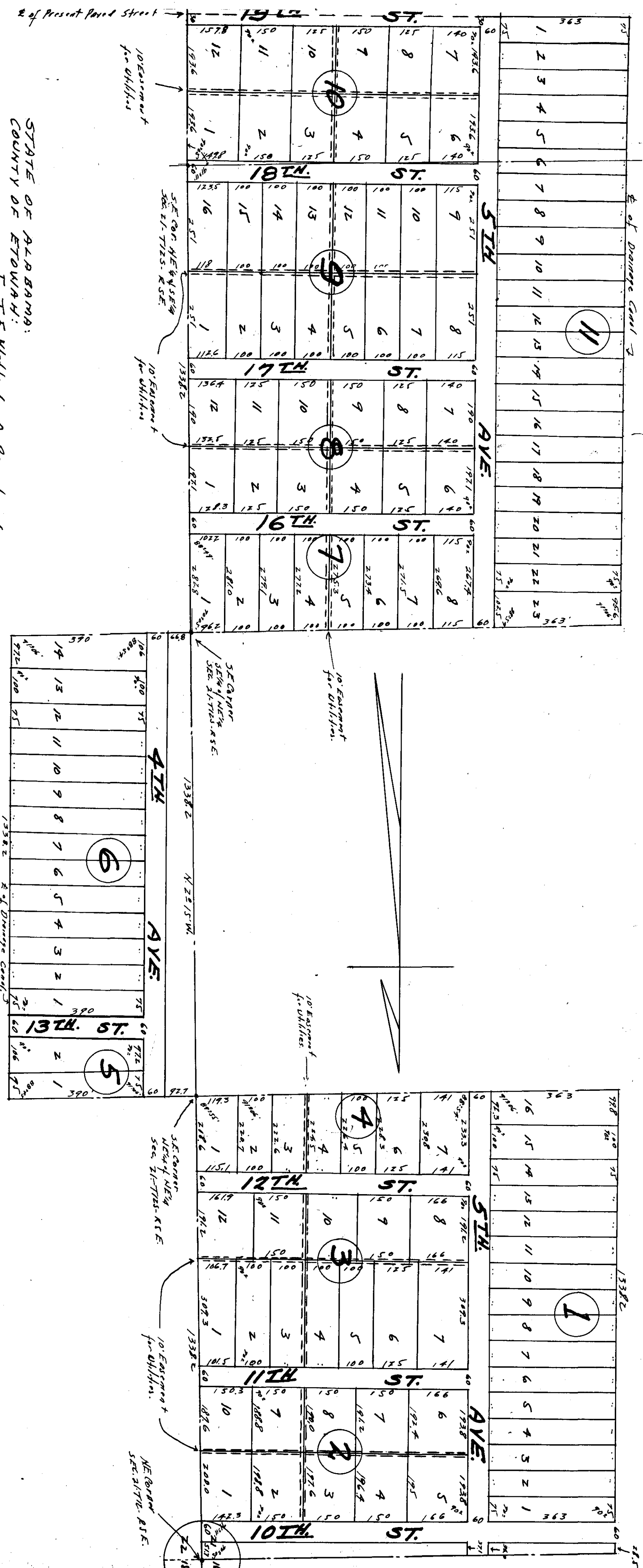


J. H. McCORMICK'S SUBDIVISION  
 BEING PARTS OF NE 1/4 OF NE 1/4, NE 1/4 OF SE 1/4,  
 SE 1/4 OF SE 1/4 OF SEC. 21-T12S-R5E AND PART  
 OF SW 1/4 OF NW 1/4-SEC. 22-T12S-R5E



STATE OF ALABAMA:  
 COUNTY OF ETOWAH:  
 I, T. E. Willford, a Registered  
 Engineer, Surveyor of Good and Able Herod  
 certify that the same has been made on actual survey  
 of the land shown on this map and that  
 the same is true and correct as shown.  
 According to my Survey this 28th  
 day of October, 1928.

Signed: T. E. Willford C. E. & L. S.  
 214. License No. 29.

Approved by Grading City Planning Commission  
 by T. M. Giddens

Approved: W. R. Edwards City Engineer.

Found a discrepancy of 1/2 inch

Filed in office for record on the 27th day of  
 Oct. A. D. 1928 at 11:05 A. M.  
 A. M. and duly recorded this 3rd day of  
 Nov. 1928