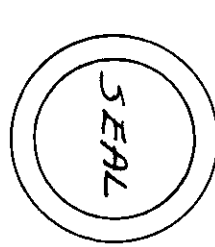


S.D. GRIFFITH'S ADDITION TO HOKES BLUFF
 And being a portion of the SW^{1/4} of the SE^{1/4} and a
 portion of the SW^{1/4} in Section 11, Township 12
 South, of Range 7 East of Huntsville Meridian, Etowah
 County, Alabama.

STATE OF ALABAMA:
 COUNTY OF ETOWAH:
 I, J.W. Alexander, Jr., Surveyor
 hereby certify that I made a survey of the
 lands embraced in the above plat and that
 the same is true and correct representation
 thereof. This the 19th day of August, 1928.

J.W. Alexander, Jr.
 Registered Surveyor No. 751

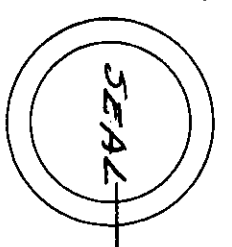


STATE OF ALABAMA:
 COUNTY OF ETOWAH:
 I, S.D. Griffith, owner of the
 lands embraced in the within plat lined by
 my wife, Myrtle Griffith, hereby testify and
 adopt the same as being true and correct
 This the 23 day of August 1928.

S.D. Griffith
 Myrtle Griffith
 Etowah, Ala.

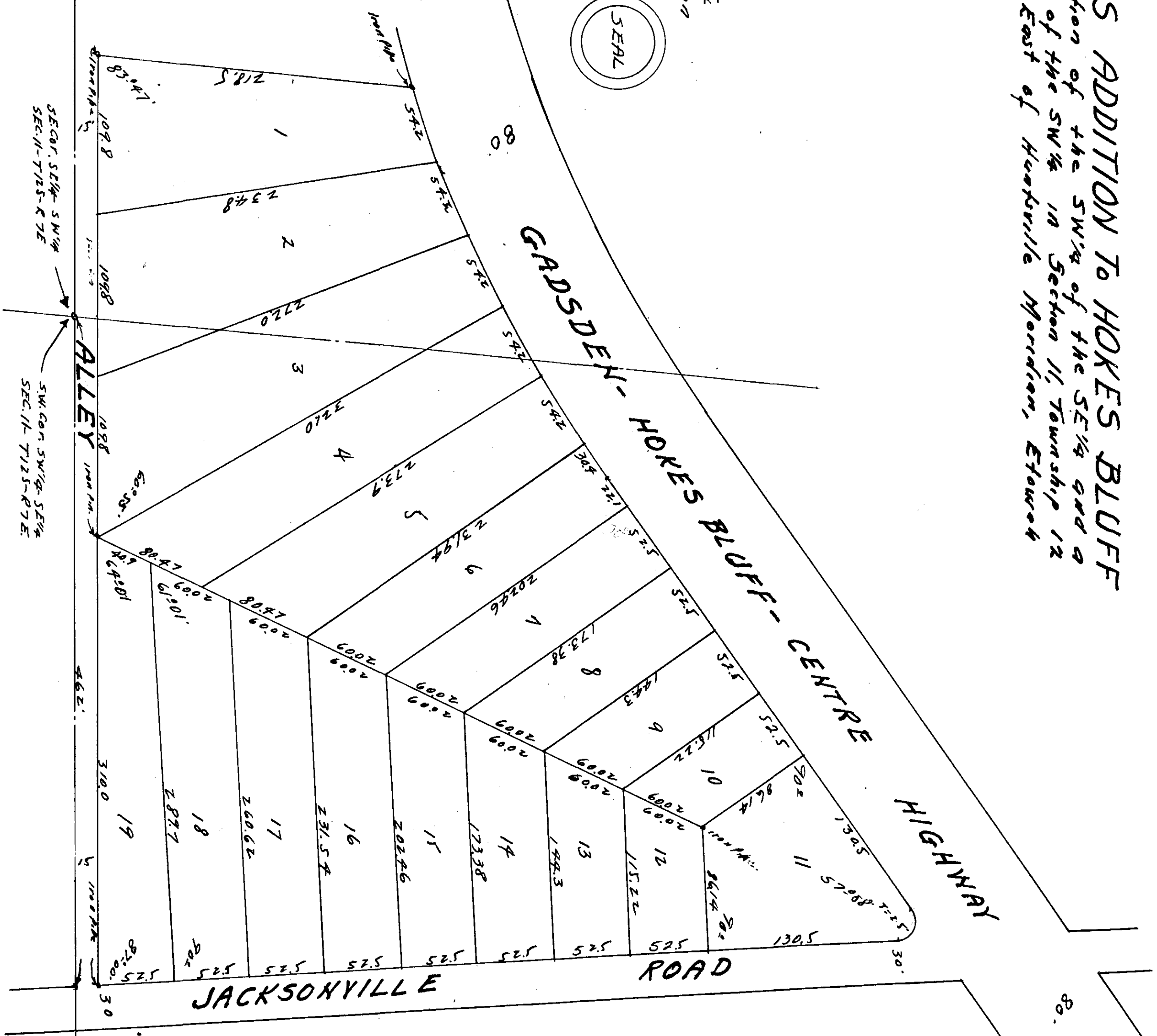
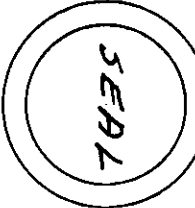
THE STATE OF ALABAMA:
 THE COUNTY OF ETOWAH:
 I, H.S. Patterson, a Notary Public
 in and for said County and State, hereby
 certify that S.D. Griffith and Myrtle Griffith,
 Griffith owners, whose names are signed to the
 foregoing map or plat, and who are known to
 me, acknowledged before me on this day that
 being informed of the contents of the plat
 they executed of the same with freely on
 the day the same were signed and
 notarial seal this the 23 day of August 1928.

H.S. Patterson
 Notary Public



THE STATE OF ALABAMA:
 THE COUNTY OF ETOWAH:
 I, H.S. Patterson, a Notary Public
 in and for said County and State, do hereby
 certify that on this the 23 day of August
 1928, S.D. Griffith and Myrtle Griffith, known
 to me to be the wife of the within named
 S.D. Griffith, who being by the examination
 of the separate and apart from her
 husband and touching her signature to the within
 plat, acknowledged that being informed of the
 contents, she executed the same of her own
 free will and accord, and without fear,
 constraint or threats on the part of her
 husband. In witness of all of which I hereto
 set my hand and notarial seal this 23 day of
 August 1928.

H.S. Patterson
 Notary Public



This is a true and correct copy of the original map as recorded in the
 Office of the Surveyor General, Etowah County, Alabama, on the 26th day of
 August, A. D. 1928, at 10:30 o'clock
 and duly recorded in the
 Book of Public Records of Etowah County, Alabama, on the 26th day of
 August, 1928.

Frank A. Reagan
 Clerk of Public Records