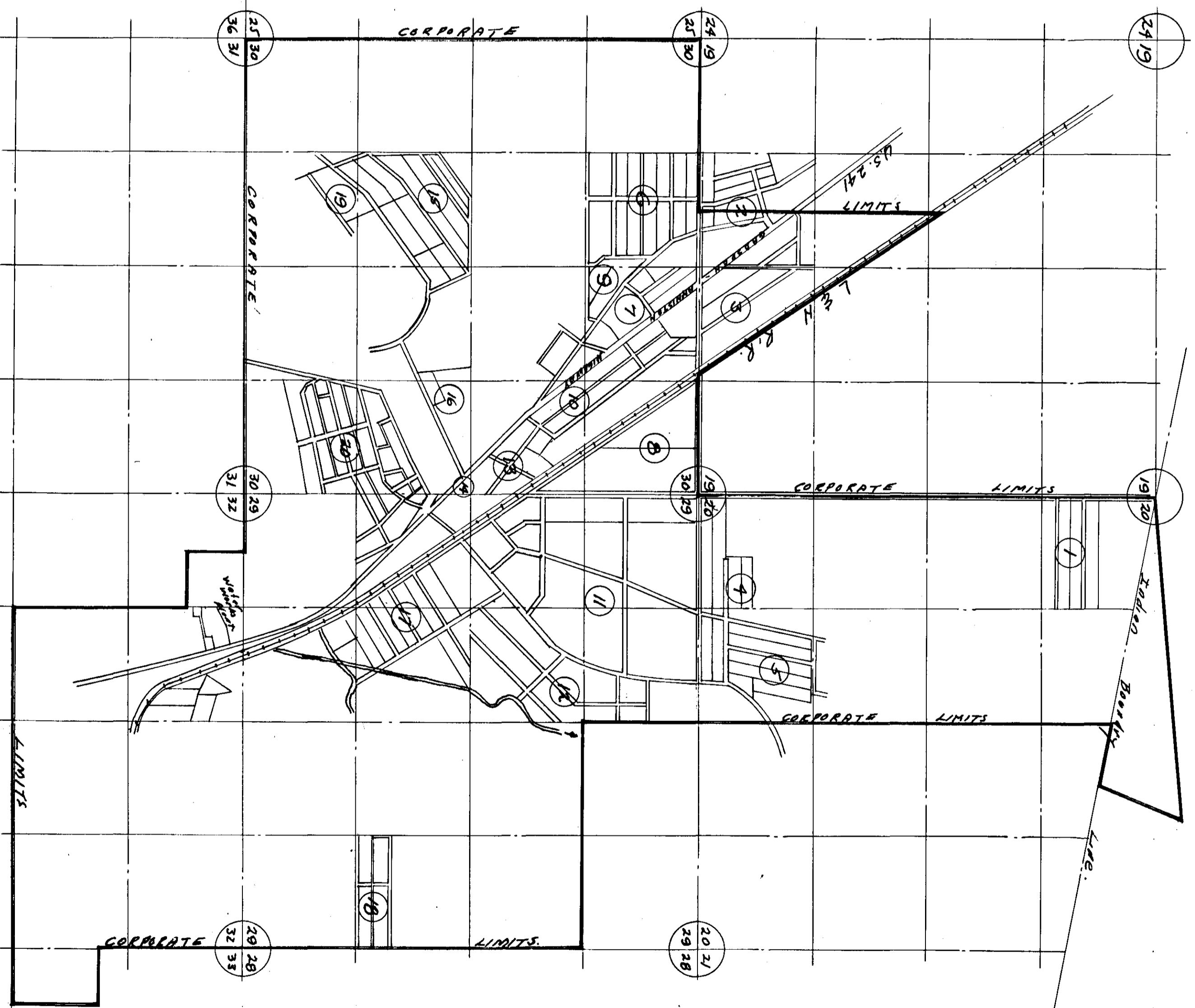


GLENCOE, ALABAMA
IN T12S, R7E.
Scale: 1" = 1000'

- SUBDIVISIONS
- 1 Marker
 - 2 Glenwood
 - 3 Glendale
 - 4 Mary Martha Lay
 - 5 Taylor
 - 6 Wilbanks
 - 7 Briarwade
 - 8 Allgood
 - 9 Roberts
 - 10 Taylors Rear of Pt. of T&A.S.
 - 11 Sims No. 1.
 - 12 Sims No. 2.
 - 13 Speace Brickyard
 - 14 Brown
 - 15 Pinehill
 - 16 Johnson
 - 17 Tracy Ford
 - 18 Lay
 - 19 Johnsons 1st Add. East.
 - 20



Record to which this record is referred on the 23rd day of
 1929 A.D. 1928 at 3:15 o'clock
 P.M. and duly recorded this 19th day of
 5 o'clock
 State of Alabama

Frank A. Ferguson