

**THE GLADDEN SUBDIVISION
LOCATED IN SECTIONS 19-20-29 & 30-T10S-R7E.
ETOWAH COUNTY, ALA.**

By - E.H. Lee, Civil Engineer & Surveyor, Gadsden, Alabama, Feb. 21st 1928.

I, E.H. Lee, Civil Engineer and Surveyor, hereby certify that I made the subdivision of the parcel numbered 19-29, both inclusive, as shown in the within plat and that the same is true and correct as herein indicated with its relation to the lines of the original survey of 1928.

Witness my hand.

E.H. Lee, C.E. and surveyor.

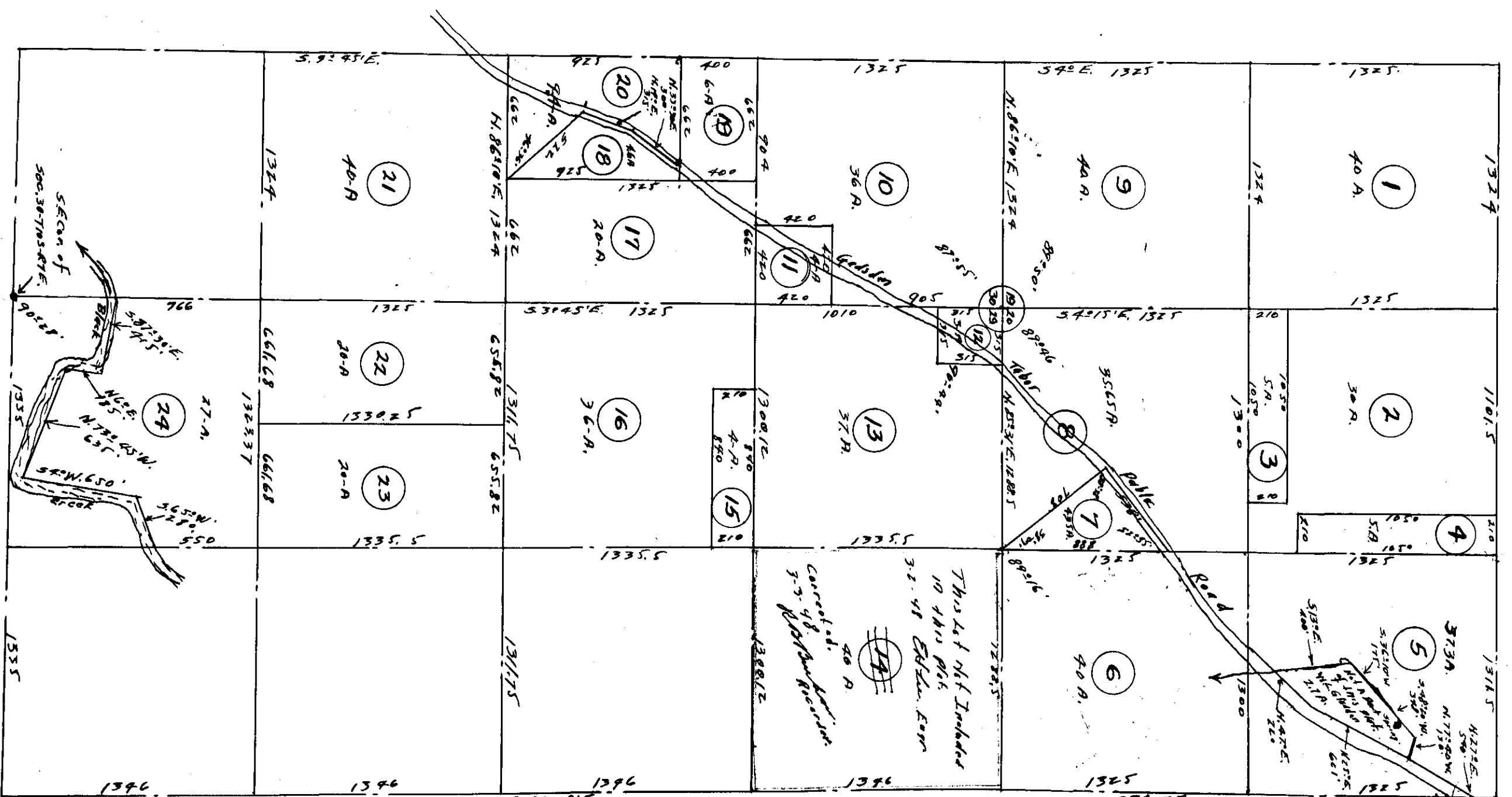
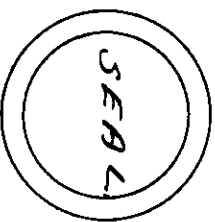
We, the undersigned, owners of the property shown by 4's number 19-29 both inclusive, of the within subdivision, do hereby verify, confirm and ratify the said subdivision as being true and correct.

J. of W. Gladden, G. H. Black
 J. W. Gladden, G. H. Black
 C. F. W. Gladden, G. H. Black
 J. W. Gladden, G. H. Black
 C. F. W. Gladden, G. H. Black
 J. W. Gladden, G. H. Black
 C. F. W. Gladden, G. H. Black
 J. W. Gladden, G. H. Black
 C. F. W. Gladden, G. H. Black

STATE OF ALABAMA:

I, Milton W. Caldwell, a Notary Public in and for said State and County, do hereby certify that J.S. Gladden, J.W. Gladden, H.W. Gladden, C.F. Gladden, J.H. Gladden, Pearl Bondard, Sarah E. Mason and Lois Mae E. Harvey, whose names are signed to the foregoing instrument and who are known to me, do acknowledge before me on the date that being referred to the contents of the said instrument, they executed the same voluntarily in and as the act of their own free will and accord.

Milton W. Caldwell,
Notary Public.



Filed in office for record on the 22nd day of Feb. A. D. 1928 at 9:00 o'clock.

E.H. Lee and duly recorded the 19th day of Feb. 1928.

Frank A. Morgan