

Amended by Ordinance 2-9-1948  
Book 358 and page 369

# WRIGHT'S VILLAGE SUBDIVISION REARRANGEMENT LOT 1, BLK. 6.

Call  
253

STATE OF ALABAMA:  
ETOWAH COUNTY:  
I, T. E. Whetford, a Registered Civil Engineer and Land Surveyor, hereby certify that I have made an actual survey of the land shown on this map, and that the same is correct as shown herein.  
Given under my hand and seal this the 16th day of December 1937.

Signed: T. E. Whetford  
C. E. & K. S. Ala. License No. 29.

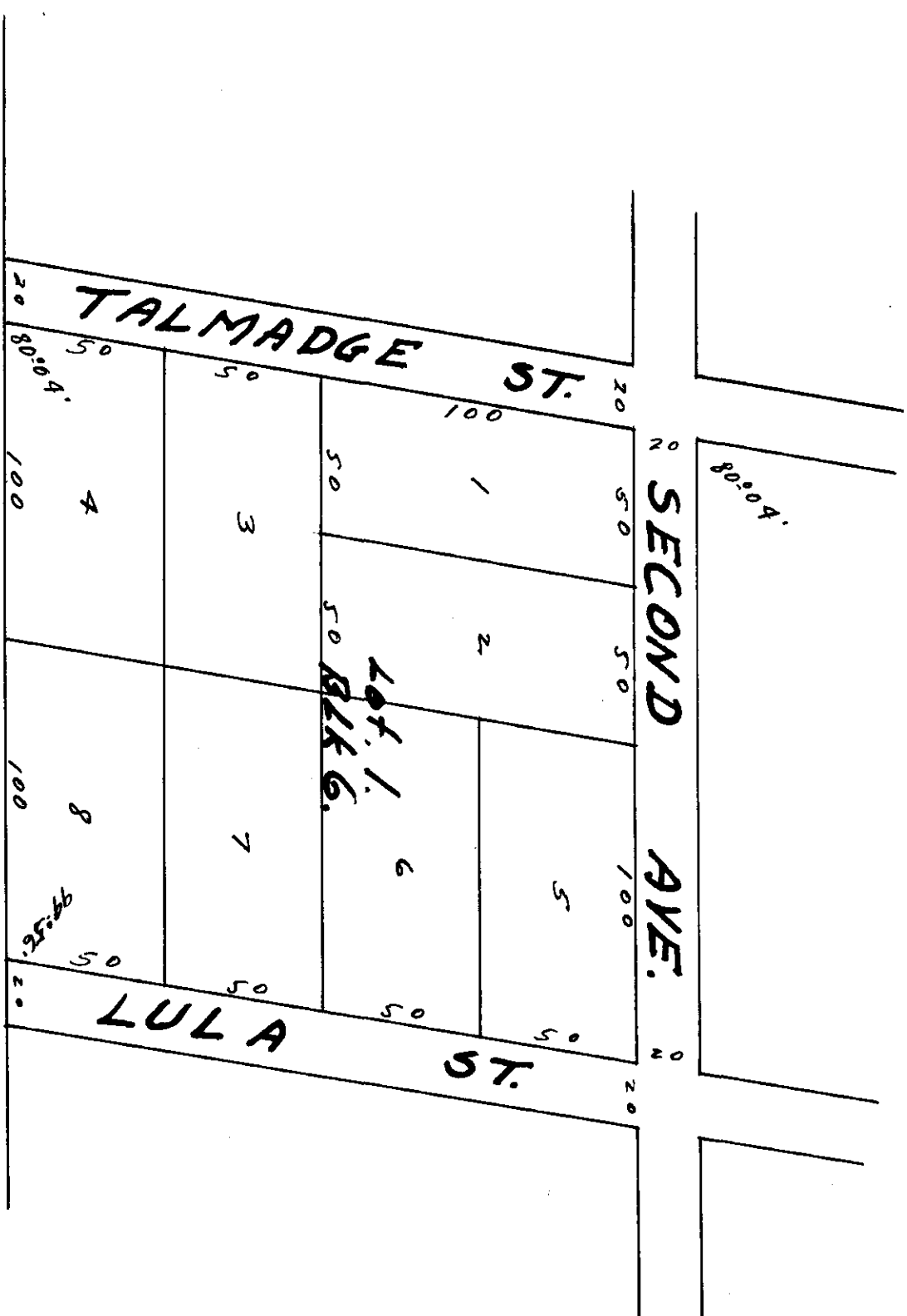
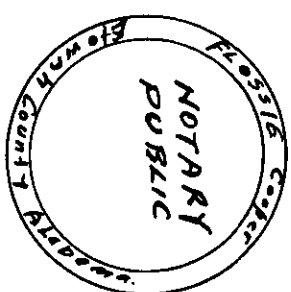
I, the undersigned owner of the lands shown on this map, do hereby certify, confirm and adopt this plat as being true and correct.  
Given under my hand this the 16th day of December, 1937.  
Signed: *Blaine Cooper*, owner.

STATE OF ALABAMA:  
COUNTY OF ETOWAH:  
I, Blaine Cooper, Attorney Public, do hereby certify that the signed owner of the lands herein described and who is known to me, appeared before me on this day and upon being informed of the contents of this instrument, the acknowledging before me, that he executed the same voluntarily, on this the 16th day of December, 1937.  
Given under my hand and seal this the 16th day of Dec. 1937.

Signed: Blaine Cooper, N. P.

Approved for City of Gadsden  
*W. P. Kanda*  
City Engineer

Approved by City of Gadsden Planning Board  
*F. M. Batts*  
Fred F. H's Chairman.



Filed in office for record on the 14th day of Dec. 1937  
A. D. 10 47 A. 2:12 check  
D. G. C.  
P. M. and duly recorded this 17th day of Dec. 1937  
Notary Public

*Frank A. Morgan*  
Notary Public