

THE BROWN ADDITION TO ALTOONA, ALABAMA.

Location of Property: Beginning NW corner of Section 3 Township 12, Range 2 East, Thence along the NW line for full 1/4 Section, Thence Running West following the 1/4 E. Right of Way the full 1/4 of the NE 1/4 of the NE 1/4 of Section 4, Twp. 12, R. 2 E. to a Point 300' North of the SW 1/4 of the NE 1/4 of Section 4, Twp. 12, R. 2 E. Thence South for 1000' along the SE 1/4 of the NE 1/4 of Section 4, Twp. 12, R. 2 E. Thence East across the SE 1/4 of the NE 1/4 of Section 4, Twp. 12, R. 2 E. Thence East across the SW 1/4 of Section 4, Twp. 12, R. 2 E. Thence East on Map Thence turning North on Section line 1840' to the NE corner of the NW 1/4 of the NW 1/4 of Section 3, Twp. 12, R. 2 E. Thence West along Section line to the NW corner of Section 3, Twp. 12, R. 2 E. The point of Beginning.

I Herby certify that distances & angles are correct as shown on this map according to my survey.

ALTOONA, ALABAMA

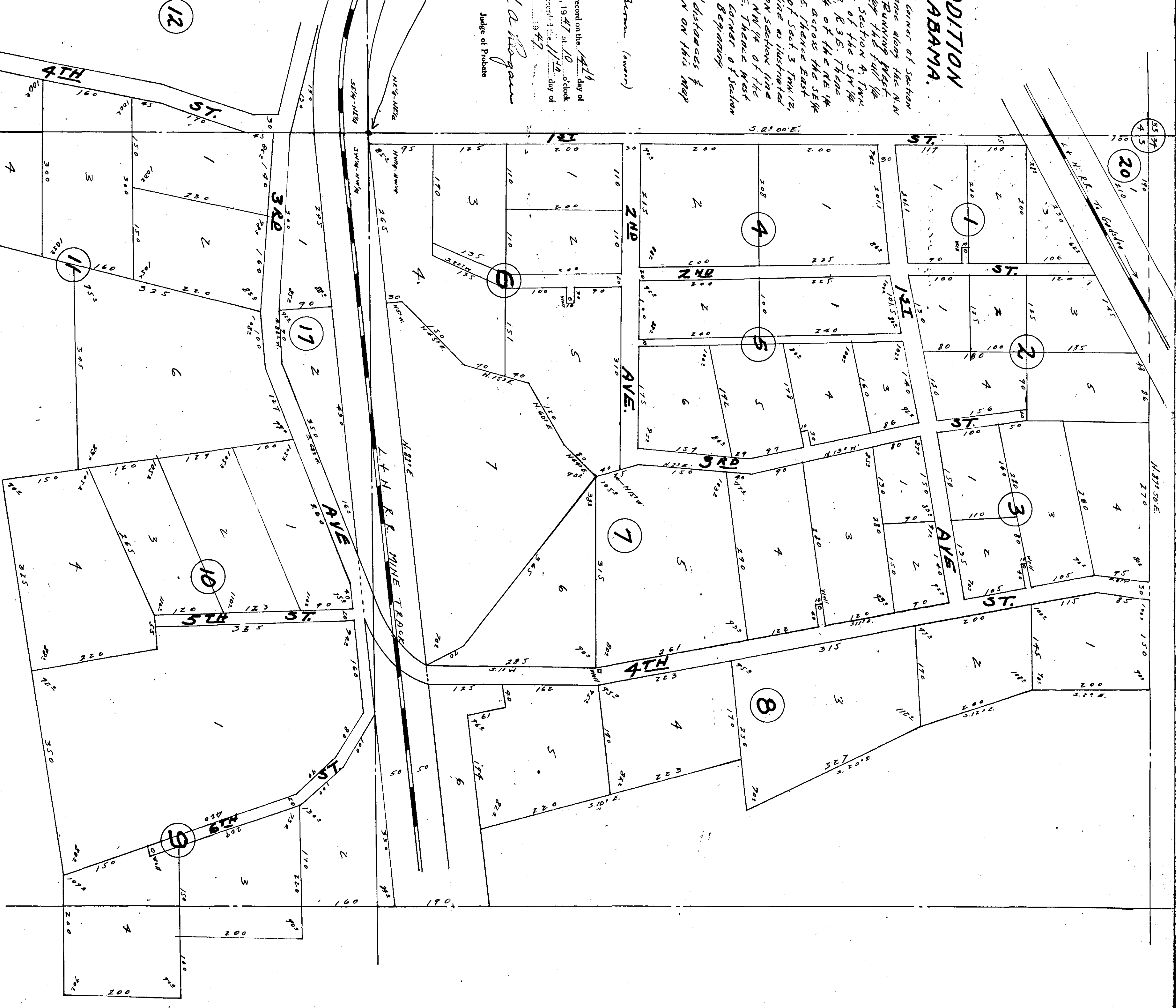
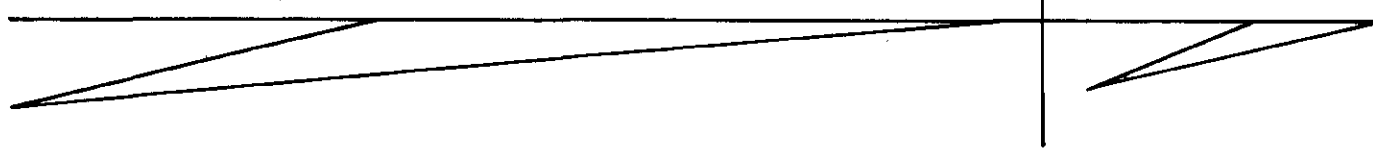
Thayer Brown (owner)

MARCH 19, 1947

Scale 1" = 100'

Filed in office for record on the 14th day of March, A. D. 1947 at 10 o'clock P.M. and duly recorded on 11th day of April, 1947.

Frank A. Morgan
Judge of Probate



12