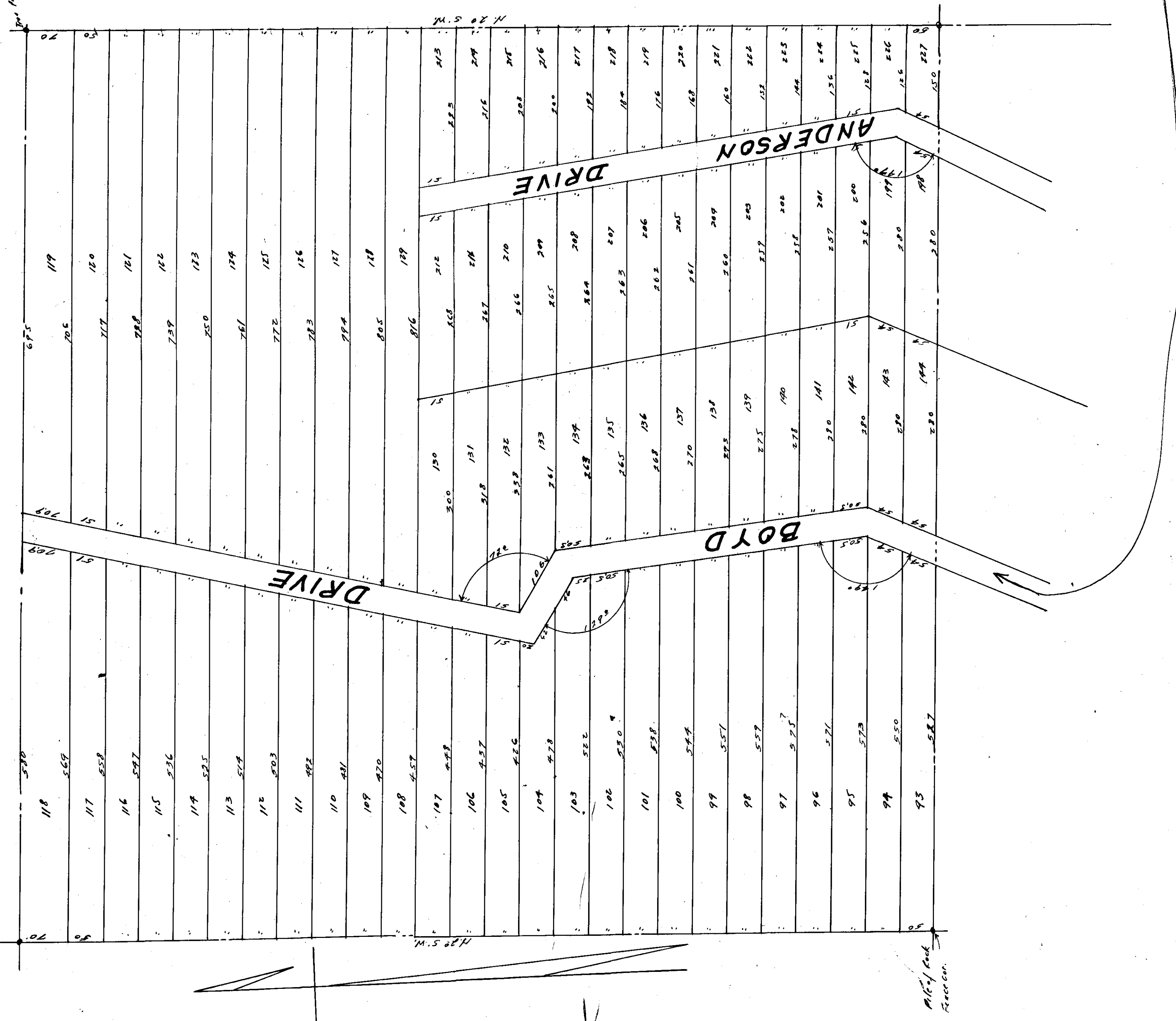


THE DUNCAN HEIGHTS SUBDIVISION
ETOWAH COUNTY GADSDEN, ALABAMA
 SURVEYED BY Porter Wharton, DRAWN BY Porter Wharton
 Scale: 1" = 100'

ANNEXATION Misc. 127 Page 693



Check all areas for records in the
 Sept. 11, 1946, to 20th
 P.M. and duly recorded this
 Sept. 11, 1946.
 E. L. HURST, Judge of Probate