

MAP OF MAMIE M. CHALFANT'S SUBDIVISION
 IN NE 1/4 - SW 1/4 - SECTION 29 - T12S - R6E.
 By E.H. LEE, C.E. & SURVEYOR GARDEN, ALA. Aug. 10, 1946.

I, E.H. Lee, Civil Engineer and Surveyor, hereby certify that I made a survey of the lands contained in the within plat and that the said survey and plat are true and correct according to the laws of the original Government Survey as known and recorded.

Garden, Ala. E.H. Lee, C.E. & Surveyor

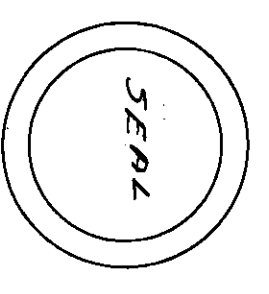
I, Mamie M. Chalfant, owner of the property contained in the within plat do hereby certify, confirm and adopt the said plat and as correct as being true and correct. This 10th day of August, 1946.

Garden, Ala. Mamie M. Chalfant
 owner

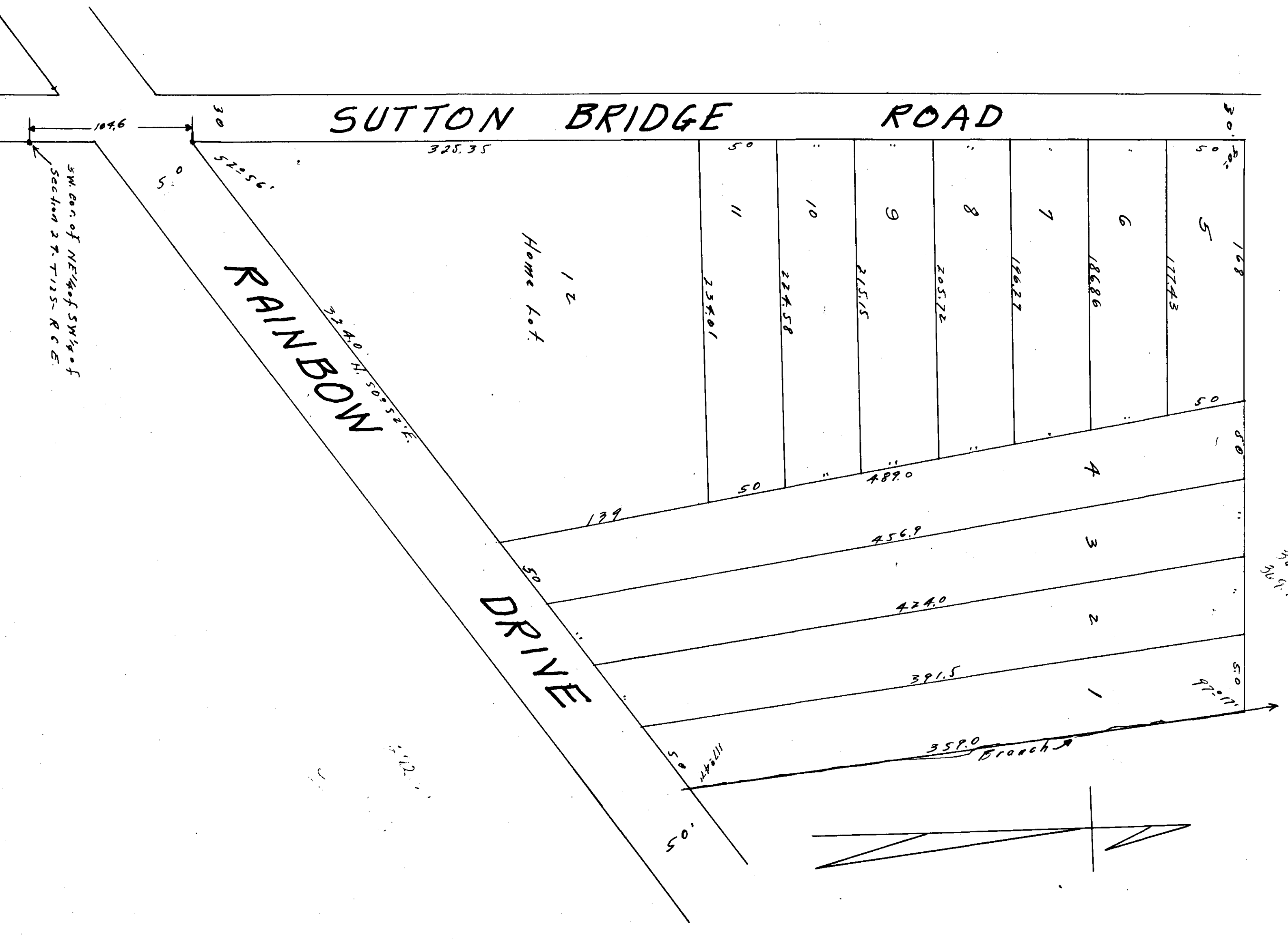
STATE OF ALABAMA
 COUNTY OF ETOWHAW

I, Howard Kirby, Clerk of Circuit Court in and for said State and County, do hereby certify that Mamie M. Chalfant whose name is signed to the foregoing instrument and who is known to me, acknowledged before me on this date that being informed of the contents of said instrument she executed the same voluntarily for and as the act of her own free will and accord.

Given under my hand this 15th day of August, 1946.
 Howard Kirby
 Clerk of Circuit Court



Filed in office for record on the 15th day of August, A.D. 1946 at 2:00 P.M. and duly recorded for the 16th day of August, 1946.
 E. L. Hirsch, Judge of Probate



SW 1/4 of NE 1/4 of SW 1/4 of Section 29 - T12S - R6E