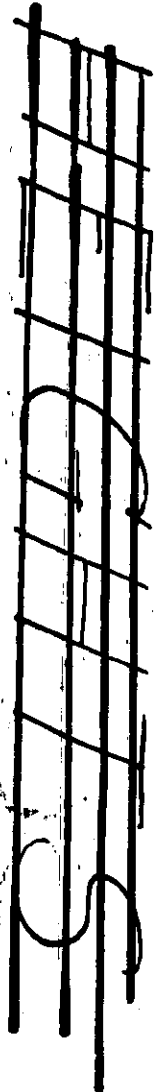


# HIGHLANDS.



SEE ~~Page Book~~ ~~F~~ ~~111~~ ~~111~~

## SUBDIVISION

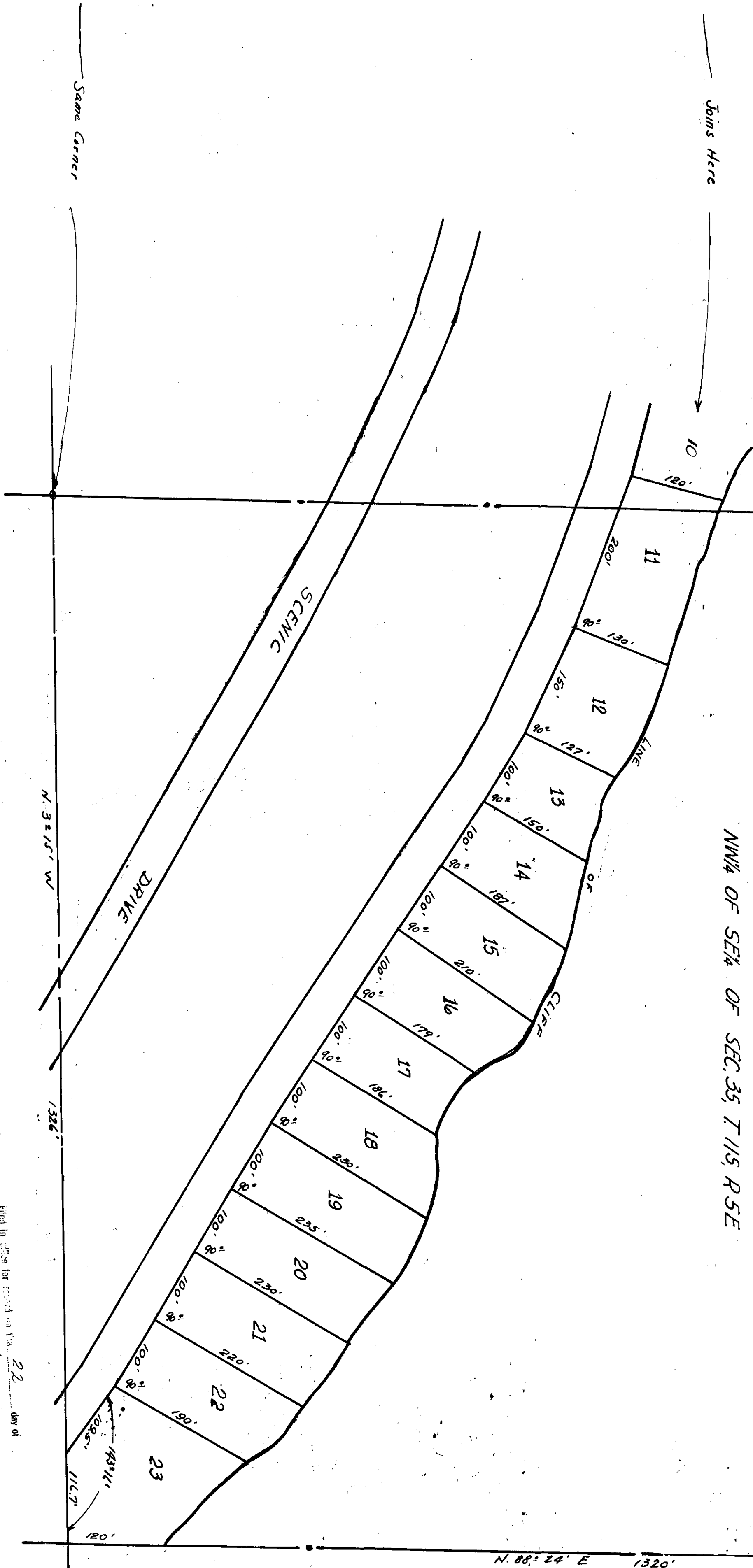
Being a Subdivision of the NW 1/4 of SE 1/4  
of Sec. 35, T. 11 S., R. 5 E., Gadsden,  
Etowah County, Ala.

S. 3° 15' E. 1324'



Joins Here

NW 1/4 OF SE 1/4 OF SEC. 35, T. 11 S., R. 5 E.



Filed in office for record on the 22 day of  
Jan 46 at 2:30 o'clock  
E. L. HULLIET, Judge of Probate