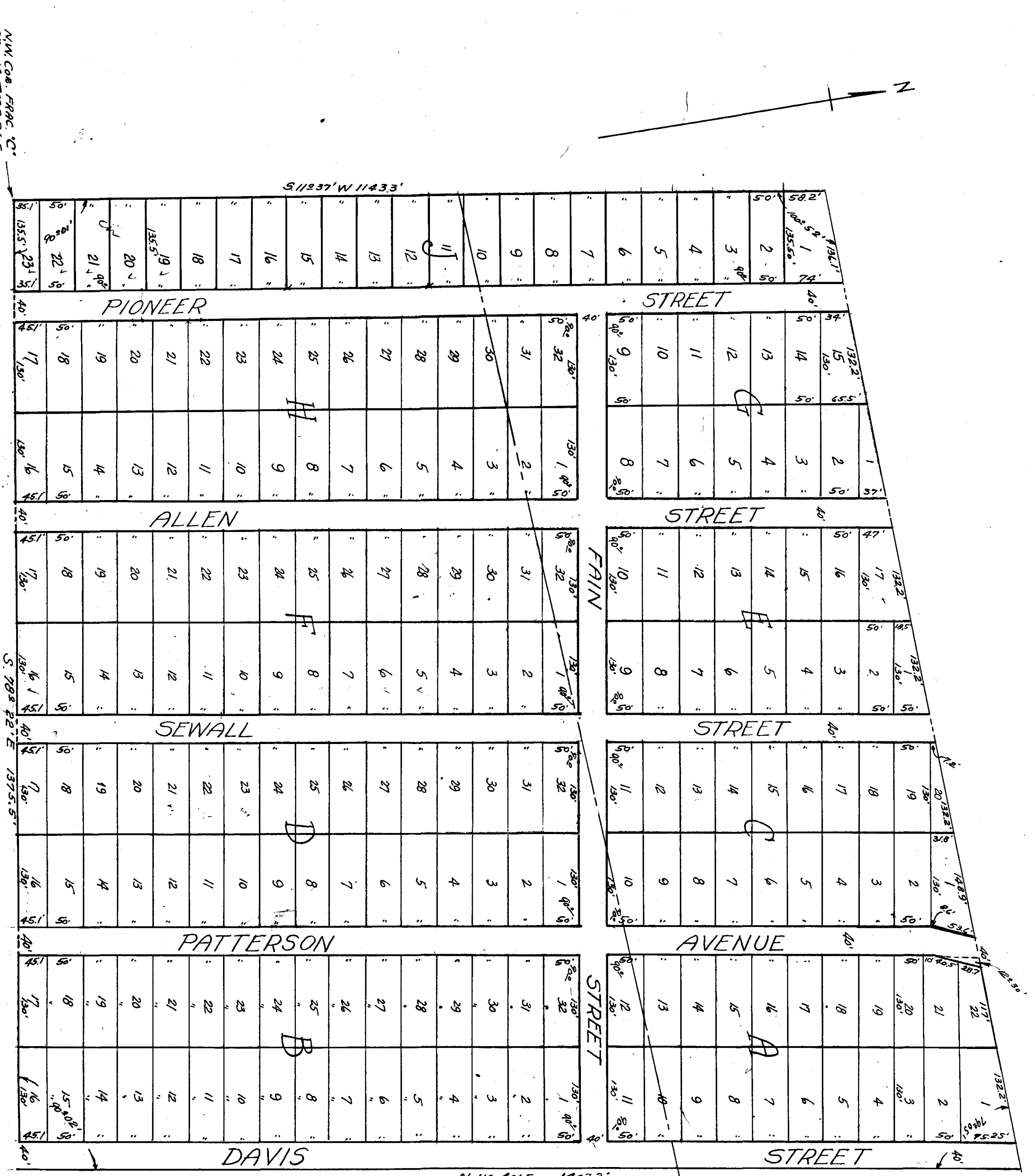


Miller Highlands

A PART OF SECTION 14, T12S, R.6E.
PART OF THE SW 1/4 AND PART OF EAST PART OF NORTH
FRACTIONAL PART OF THE SW FRACTIONAL 1/4, ETOWAH COUNTY, ALA.

MILLER HIGHLANDS



I, J.W. Walls, a Registered Surveyor,
do hereby certify this to be a true and
correct map of this property as surveyed
and subdivided by me.
This the 21st day of August, 1945.
(Signed) J.W. Walls
No. Reg. No. 907.

We the undersigned Owners of the
lands described in this Plat hereby
ratify, confirm and accept the same
as being correct.
This the 21st day of Sept, 1945.
(Signed) August A. Bandy
J. G. Alexander.

State of Alabama
Etowah County
I, Leslie C. King, a Notary Public in and
for said County and State, hereby certify
that the above mentioned Owners acknowledged
before me on this date that being
informed of the contents of this Plat
they executed the same voluntarily on
this date.
Given under my hand and Notarial Seal
this the 21st day of Sept, 1945.
Leslie C. King
Notary Public - State of Ala.

APPROVED:
County Engineer

Sept 24
Sept 24
INDEX TO PLAT

NW COR. FRAC. C.
SEC. 14, T12S, R.6E