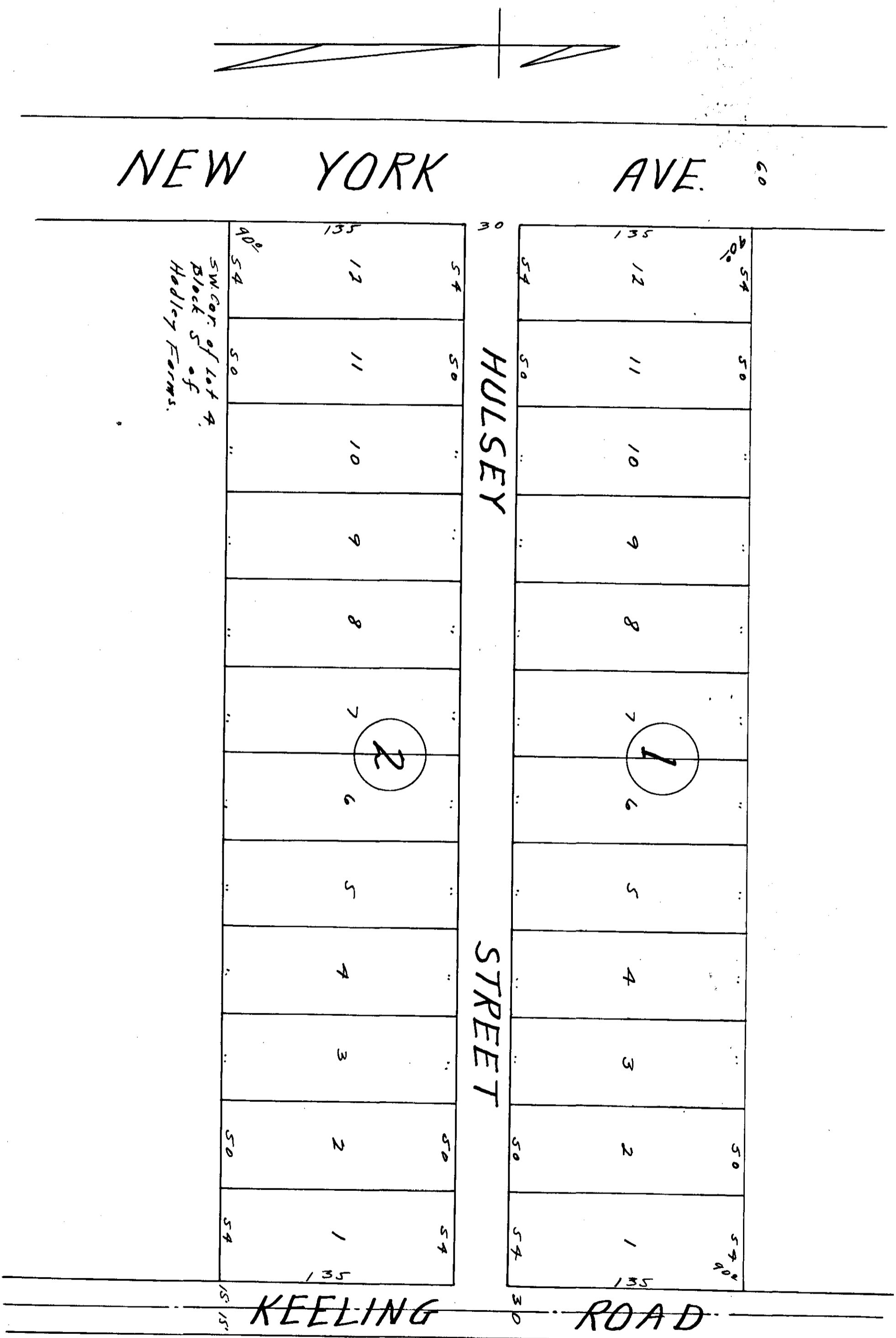


MRS. DORA DEE HULSEY'S
SUB-DIVISION OF LOT 4 BLOCK 5 OF
HADLEY FARMS



174
5
15
August

STATE OF ALABAMA
COUNTY OF STONEMAN

I, Edith, Civil Engineer and Surveyor hereby certify that I made a survey of the property hereby shown, being the subdivision of Lot 4 of Block 5 of Hadley Farms, and that the subdivision and map hereon shown is in accordance with the plan of subdivision filed with this office on July, 1945.

EDITH C. THOMPSON
C.E.T.S.

STATE OF ALABAMA
COUNTY OF STONEMAN

I, Edith, Civil Engineer and Surveyor hereby certify that I made a survey of the property hereby shown, being the subdivision of Lot 4 of Block 5 of Hadley Farms, and that the subdivision and map hereon shown is in accordance with the plan of subdivision filed with this office on July, 1945.

EDITH C. THOMPSON
C.E.T.S.

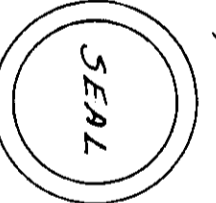
I, Dora Dee Hulsey, owner of the property contained herein, do hereby certify, explain and warrant the contents of this plat and map, and that the same are true and correct.

DORA DEE HULSEY
File by Edith

STATE OF ALABAMA
COUNTY OF STONEMAN

I, Edith, Civil Engineer and Surveyor hereby certify that I made a survey of the property hereby shown, being the subdivision of Lot 4 of Block 5 of Hadley Farms, and that the subdivision and map hereon shown is in accordance with the plan of subdivision filed with this office on July, 1945.

EDITH C. THOMPSON
C.E.T.S.



Approved: _____
Notary Public

