

**MAP OF
JW JOHNSON'S SUBDIVISION TO EAST GADSDEN
BEING IN THE NE 1/4 - NE 1/4 - SEC. 14 - T. 12 S. - R. 6 E.**

Scale 1" = 50'
Feb 28, 1945
Troy E. Wolford, Civil Engineer & Surveyor

State of Alabama
County of Etowah

I, Troy E. Wolford, a Registered Professional Engineer & Land Surveyor, hereby certify that I made a complete and true map of the above described subdivision in East Gadsden, Ala., according to the survey so shown on this map and map of the same in the office of the Surveyor General of Alabama, on the 28th day of February, 1945.

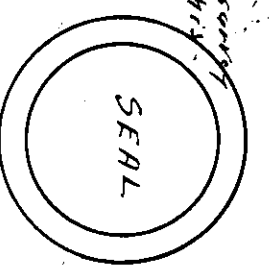
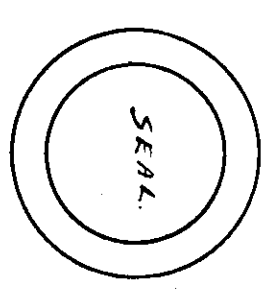
Witness my hand and seal this 28th day of March, 1945.

STATE OF ALABAMA
COUNTY OF ETOWAH

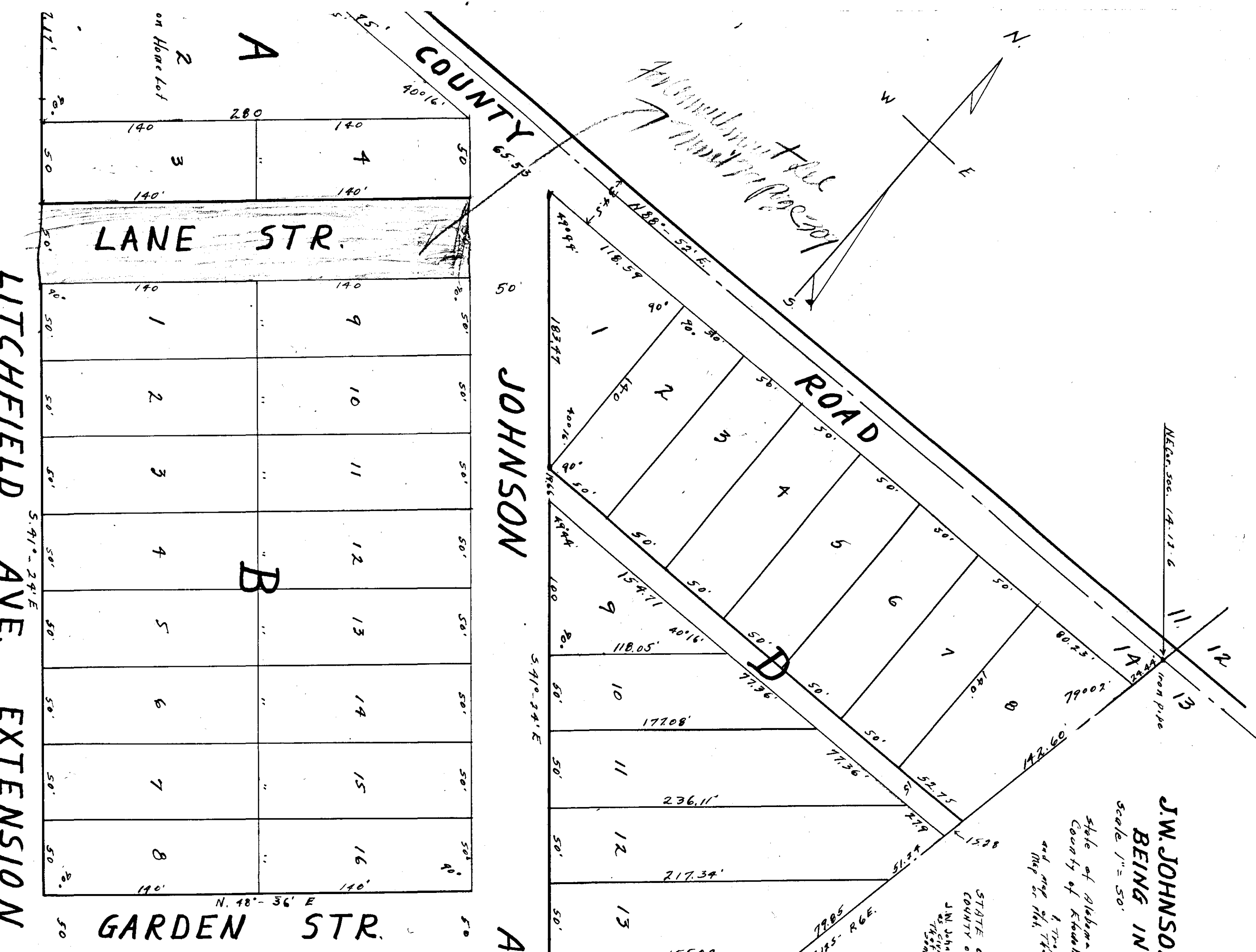
I, J.W. Johnson, owner of the lands shown on this map do hereby ratify and affirm the same as being correct in accordance with the provisions of the Statute of Alabama in that behalf then in force and seal this 28th day of March, 1945.

STATE OF ALABAMA
COUNTY OF ETOWAH
J.W. Johnson, owner of the lands shown on this map do hereby ratify and affirm the same as being correct in accordance with the provisions of the Statute of Alabama in that behalf then in force and seal this 28th day of March, 1945.

Witness my hand and seal this 28th day of March, 1945.



THIS IS GIVEN FOR RECORD ON 9/15 1945
March 15, 1945 at 12:00 P.M.
E.M. and A.M. and recorded on 10/26 1945
March 1945
E.C. Hunt
Judge of Probate



T = 158.65
A = 7.90
K = 2167.91
L = 312.01

PC 8742.1

PT 5.91