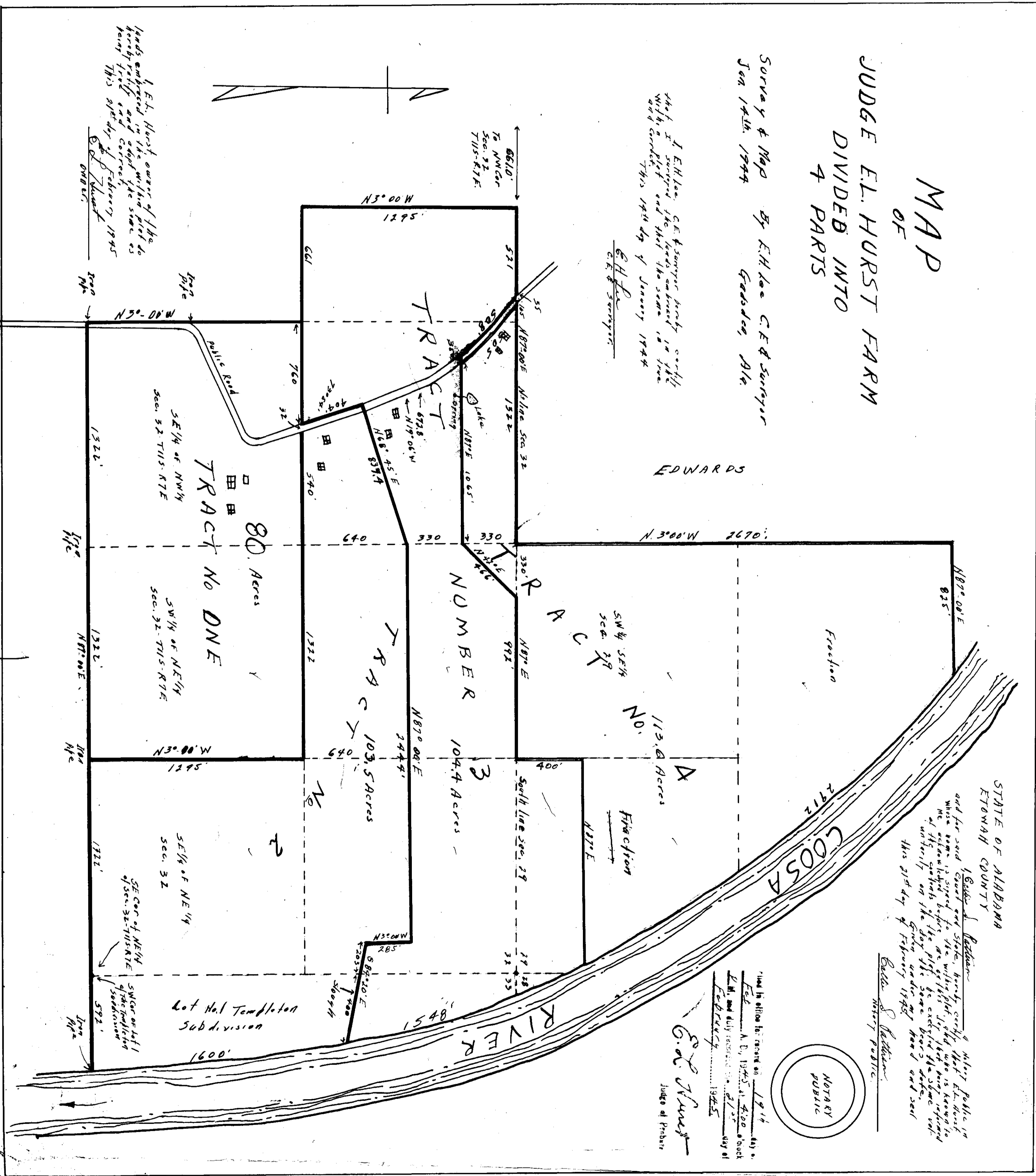


MAP
OF
JUDGE E. L. HURST FARM
DIVIDED INTO
4 PARTS

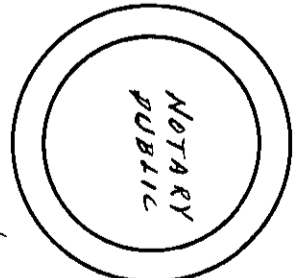
Survey & Map by E.H. Lee C.E. & Surveyor
Jan 14th, 1944 Gadsden, Ala

I, E.H. Lee, C.E. & Surveyor hereby certify that I surveyed the lands contained in this map, and that the same is true and correct. This 14th day of January 1944.
E.H. Lee
C.E. & Surveyor

I, E.H. Hurst, owner of the lands herein, do hereby certify that this map and the same as hereon is true and correct. This 14th day of February 1945.
E.H. Hurst
Owner



STATE OF ALABAMA
ETOWAH COUNTY
I, Edwin J. Redburn
Notary Public, do hereby certify that the foregoing is a true and correct copy of the original map and plat as recorded in my office on the 14th day of January 1944. This 14th day of February 1945.
Edwin J. Redburn
Notary Public



Filed in office for record on 1/14/44
E.H. Lee, C.E. & Surveyor
Gadsden, Ala
February 1945
G.E. Hurst
Judge of Probate