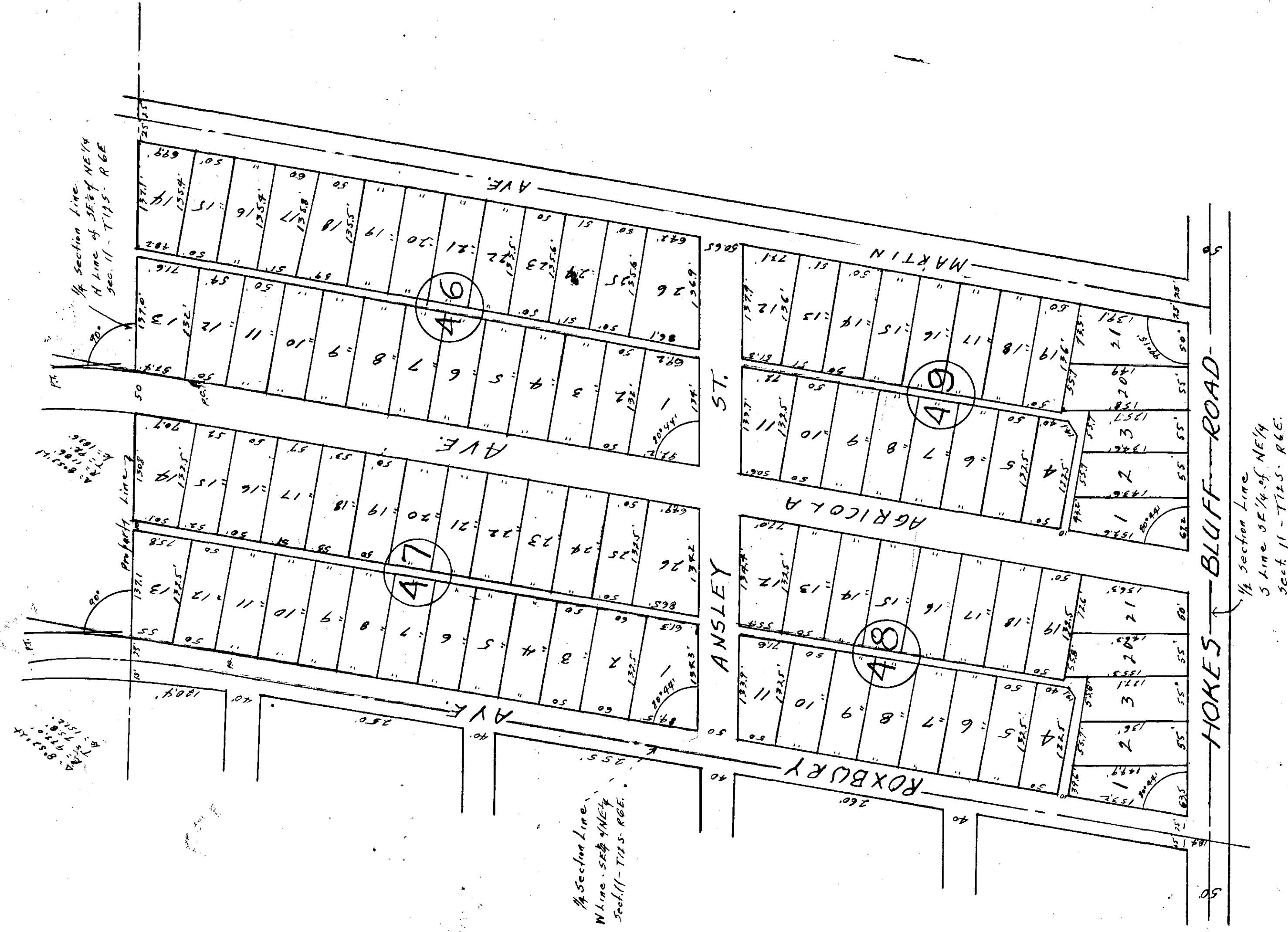


# GARDEN CITY GADSDEN, ALABAMA.

## RESIDENTIAL SUBDIVISION NO-3

NOVEMBER, 15, 1944. SCALE 1" = 100'



1/4 Section Line  
W Line - S23 1/2 W 1/4  
Sec 11 - T12S - R6E.

1/4 Section Line  
S Line SE 1/4 of NE 1/4  
Sec 11 - T12S - R6E.

Check all titles for this plat  
Dec. 10 1944 at 1:50 P.M. and duly recorded the 13th day of February 1945  
*E. L. Hunt*  
Judge of Probate

**C. HOYT ELLIS**  
CONSULTING ENGINEER  
1010 FRANK NELSON BLDG.  
BIRMINGHAM, ALABAMA.