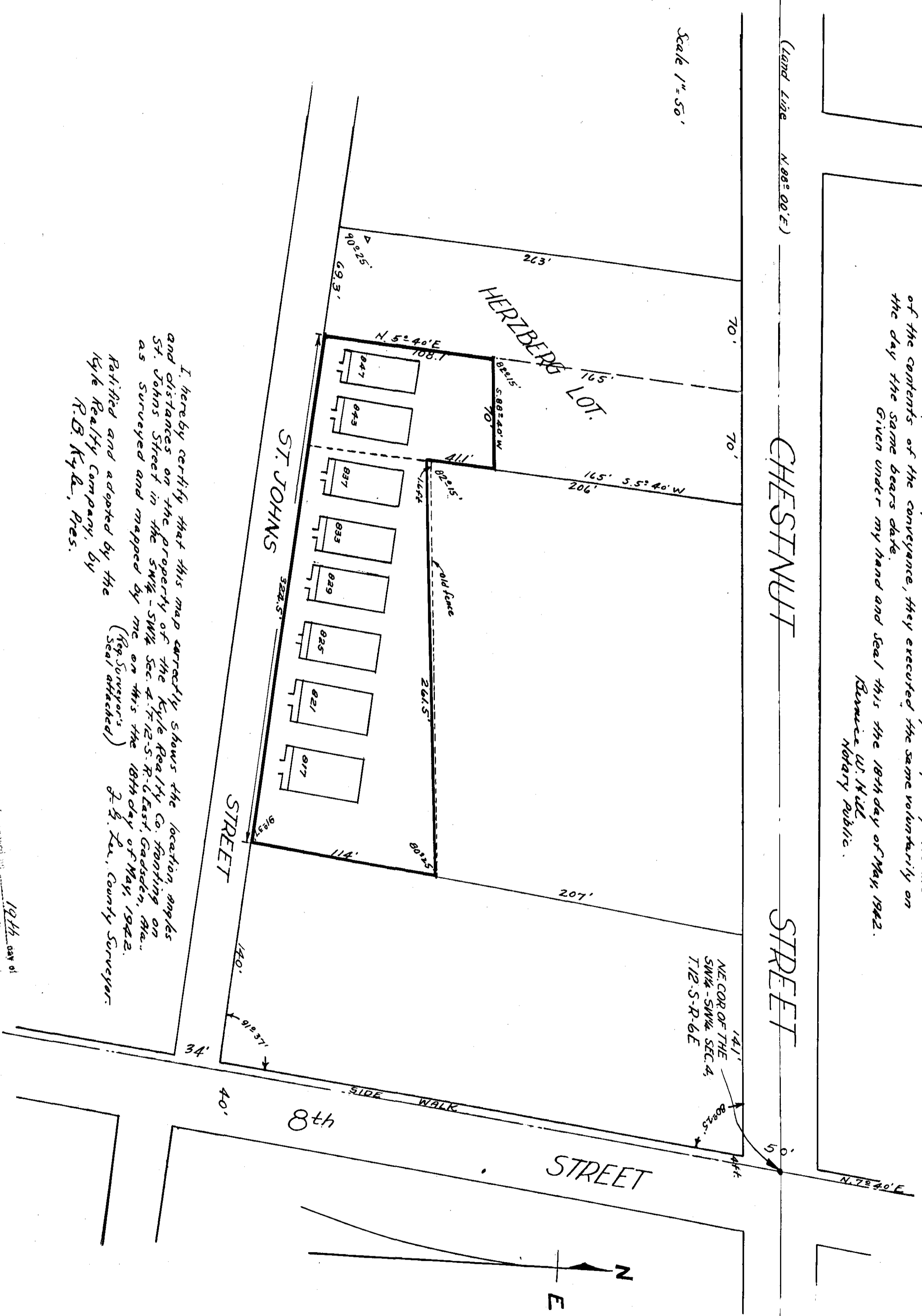


The State of Alabama  
Etowah County

I, Bernice W. Hill, a Notary Public in and for said County and State, hereby certify that F. G. Lee, whose name as County Surveyor, and R. B. Kyle, as President of the Kyle Realty Co., a Corporation, and who are known to me, acknowledged before me on this day that, being informed of the contents of the conveyance, they executed the same voluntarily on the day the same bears date.  
Given under my hand and seal this the 18th day of May, 1922.  
Bernice W. Hill  
Notary Public.

(Land Line N. 02° 02' E.)

Scale 1" = 50'



I hereby certify that this map correctly shows the location, angles and distances on the property of the Kyle Realty Co. ranging on St. Johns Street in the SW 1/4 - SW 1/4 Sec. 4 T12-S-R-6E East, Cadastre, Mo. as surveyed and mapped by me on this the 18th day of May, 1922. Ratified and adopted by the Kyle Realty Company, by R. B. Kyle, Pres. J. G. Lee, County Surveyor.

Filed in office for record on 19th day of May, 1922. A. B. Lee, County Surveyor. J. G. Lee, County Surveyor. R. B. Kyle, Pres. Kyle Realty Company.