

MAP OF SAMUEL CHAPEL CEMETERY

BY E.H. Lee, C.E. & Surveyor,
Gadsden, Ala.
Dec. 12, 1940.

I, E.H. Lee, a Civil Engineer & Surveyor, hereby certify that I made a survey of the property contained in the within plat, and that the same is true and correct as shown. It also shows the relation of the plat to the lines of the Original Government Survey.
This the 10th day of December, 1940.

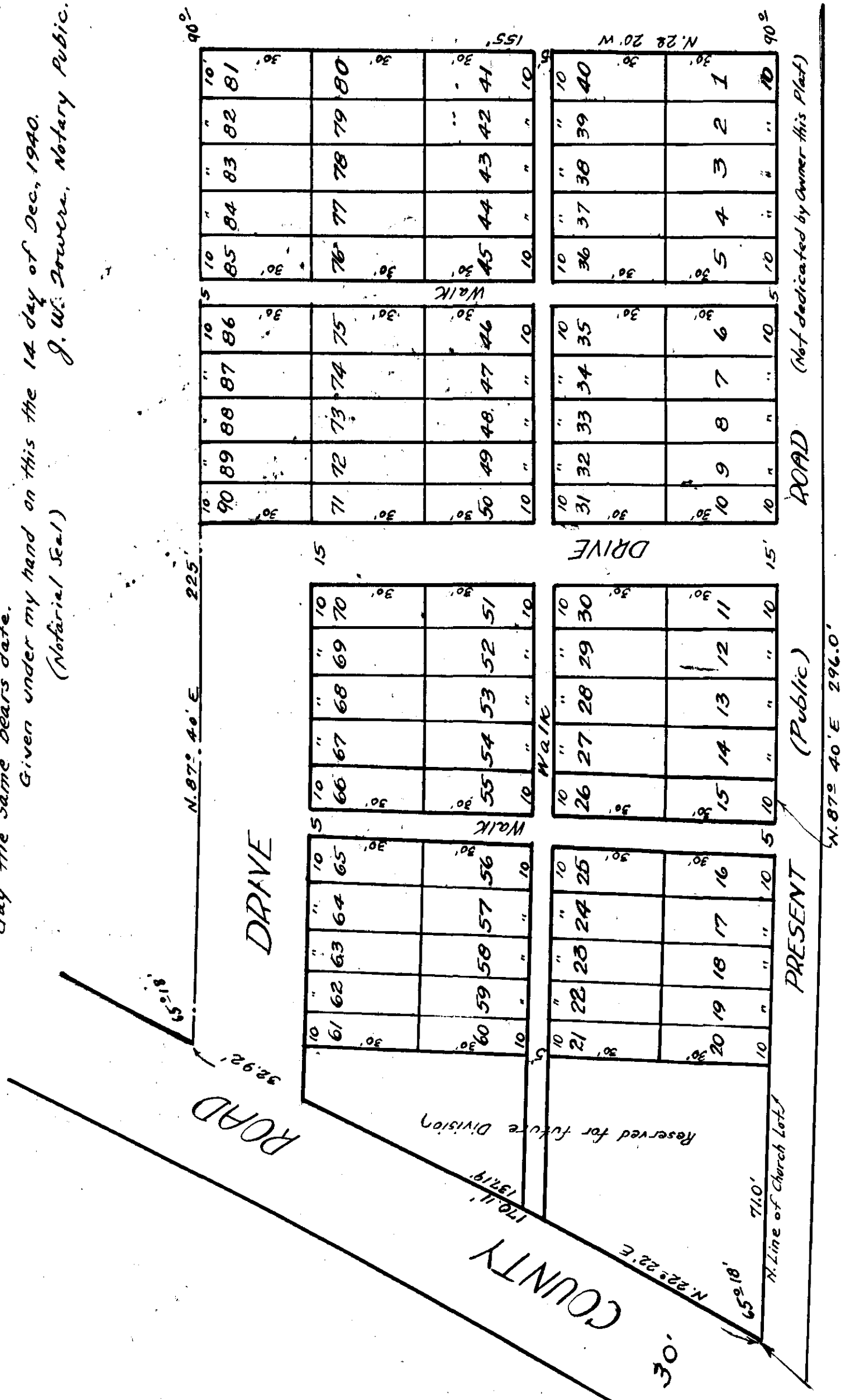
I, I. J. Samuel, owner of the property embraced in the within map or plat, hereby ratify, confirm and adopt the same as being true and correct.
This the 14th day of Dec., 1940.

I, Samuel, owner.

E. H. Lee, C.E. & Surveyor. (Map-Engr. Seal Now attached)
State of Alabama,
County of Etowah.

I, J. W. Towery, a Notary Public in and for said State and County hereby certify that I, J. Samuel, who is signed to the foregoing conveyance and who is known to me accompanied before me on this date that being informed of the contents of said conveyance, he executed the same voluntarily on the day the same bears date.

Given under my hand on this the 14th day of Dec., 1940.
(Notarial Seal) J. W. Towery, Notary Public.



SAMUEL CHAPEL CHURCH LOT

Filed in office for record on 14th day of December, A. D. 1940 at 10:00 o'clock P. M. and duly registered on 18th day of December, 1940.

E. L. Stewart
Judge of Probate

SMITH & COMPANY
Surveyors & Engineers
178