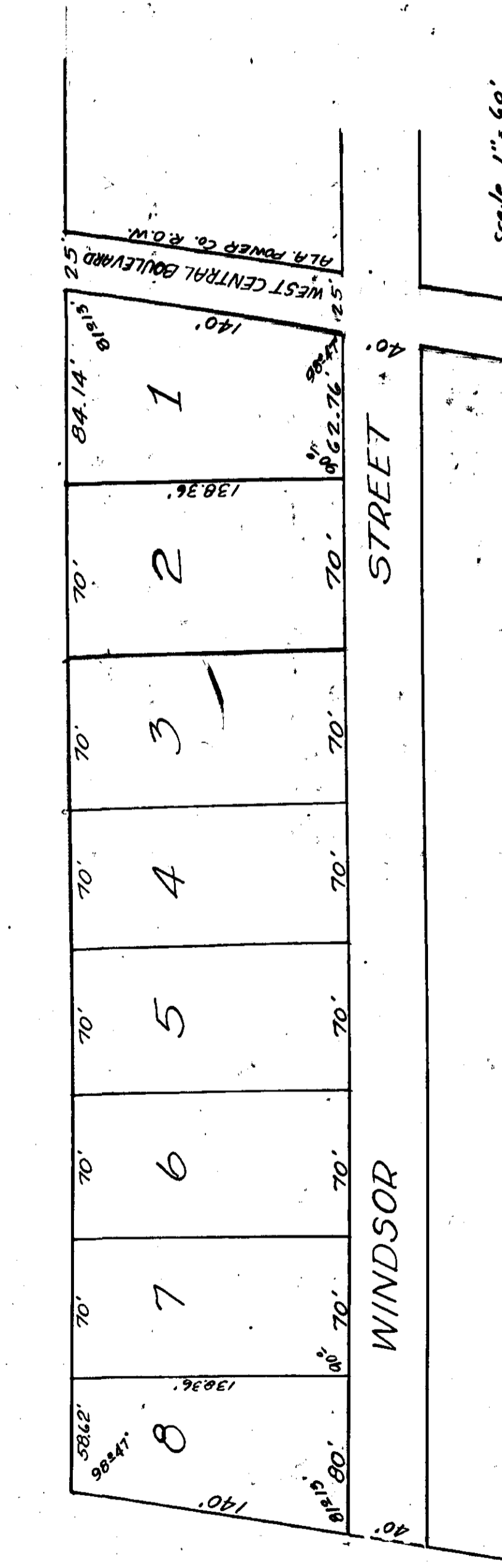


RE-ARRANGEMENT OF LOTS 23 TO 44, INCLUSIVE IN
BLOCK 1 TR. DALEY ADDITION TO GADSDEN, ALABAMA.

NE 1/4 of SE 1/4 Section 11, T. 12 S., R. 6 E.



I, J. M. Alexander, Jr., Surveyor, do hereby certify that I surveyed the lands embraced within the boundaries of the within plat and the same is a correct representation thereof. Witness my hand and seal this 17th day of September, 1940.

J. M. Alexander, Jr. (Seal Reg. Surveyor No. 105)
Surveyor

We, Gladys Sims and husband, J. M. Sims, the owners of all the lands embraced within the boundaries of the within Plat do hereby ratify and adopt the same as being correct and seals this 17th day of September, 1940.

Gladys Sims L.S.
J. M. Sims L.S.

I, H. S. Patterson, a Notary Public in and for said County of Etowah, State of Alabama, do hereby certify that Gladys Sims and husband, J. M. Sims, whose names appear on this day, being informed of the contents of the within plat, they executed the same voluntarily, on the day the same bear date.

Given under my hand and seal this 17th day of September, 1940.

H. S. Patterson
Notary Public.

Filed in office for record on 18th day of September, A. D. 1940 at 10 o'clock A. M. and duly recorded this 21st day of September, 1940.

G. L. Hurst
Judge of Probate

I, H. S. Patterson, a Notary Public in and for said County and State, do hereby certify that on this the 17th day of September, 1940, came before me the within named Gladys Sims, known to me to be the wife of the within named J. M. Sims, who being examined separately and apart from her husband, touching her signature to the within plat, acknowledged that being informed of the contents, she executed the same of her own free will and accord, and without fear, constraints or threats on the part of her husband.

In witness whereof I hereto set my hand and seal this 17th day of September, 1940.

H. S. Patterson
Notary Public.