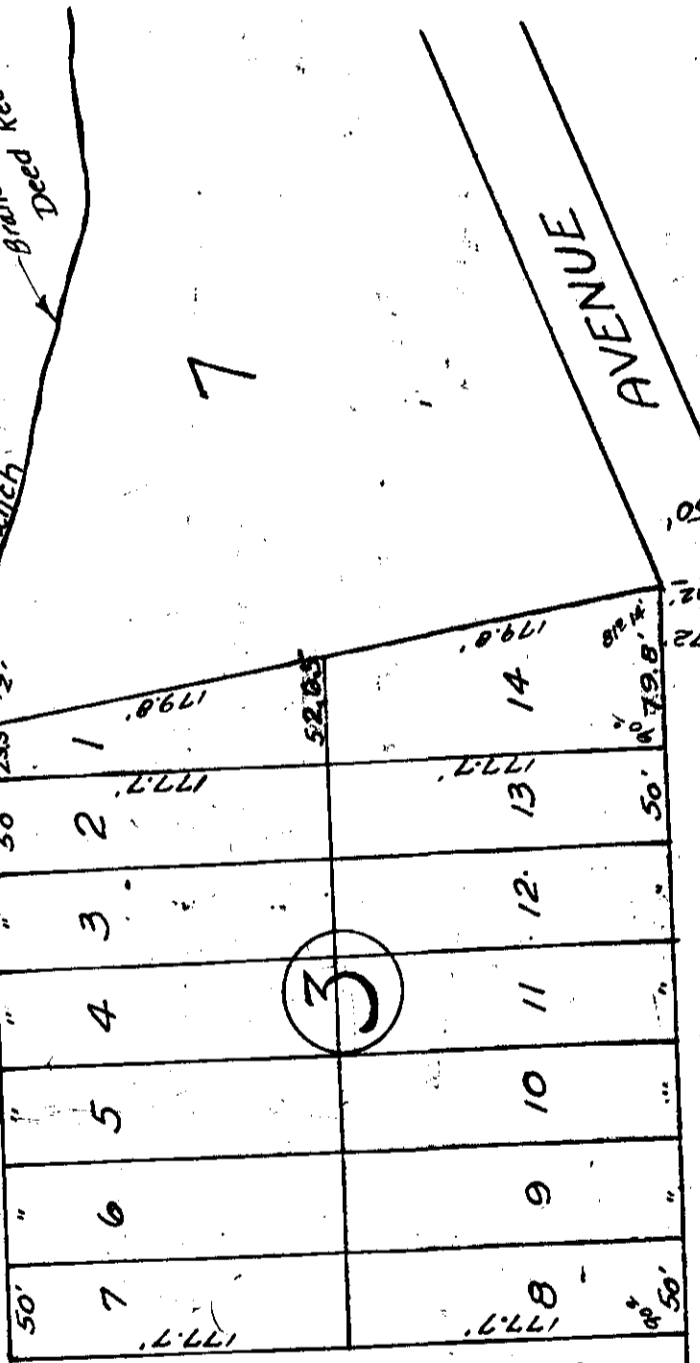


North line of party 461.7' to NE. Cor. of Forty

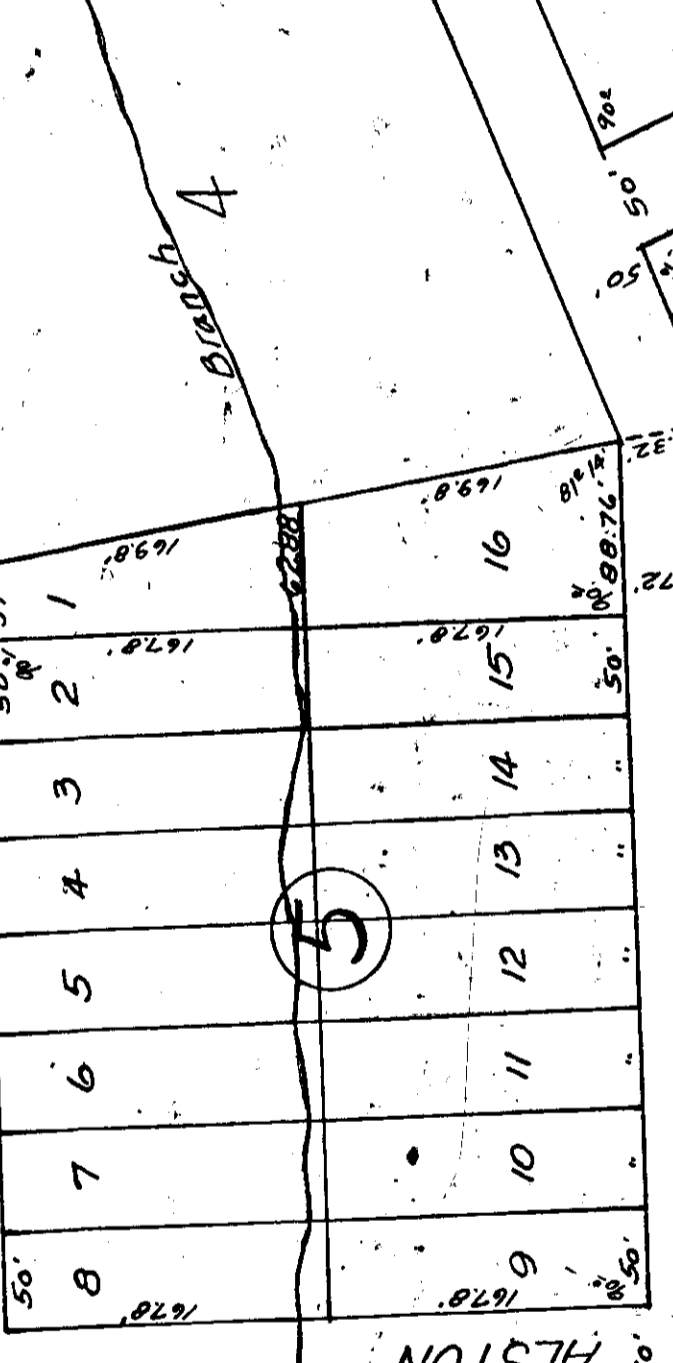
8
AVENUE

Branch referred to in Deed Record of part of 104

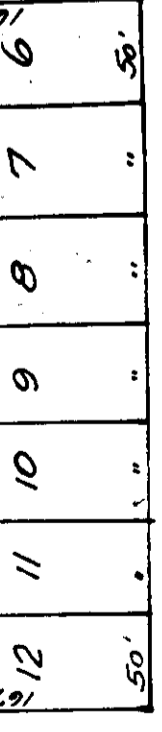
HIGHLAND AVENUE



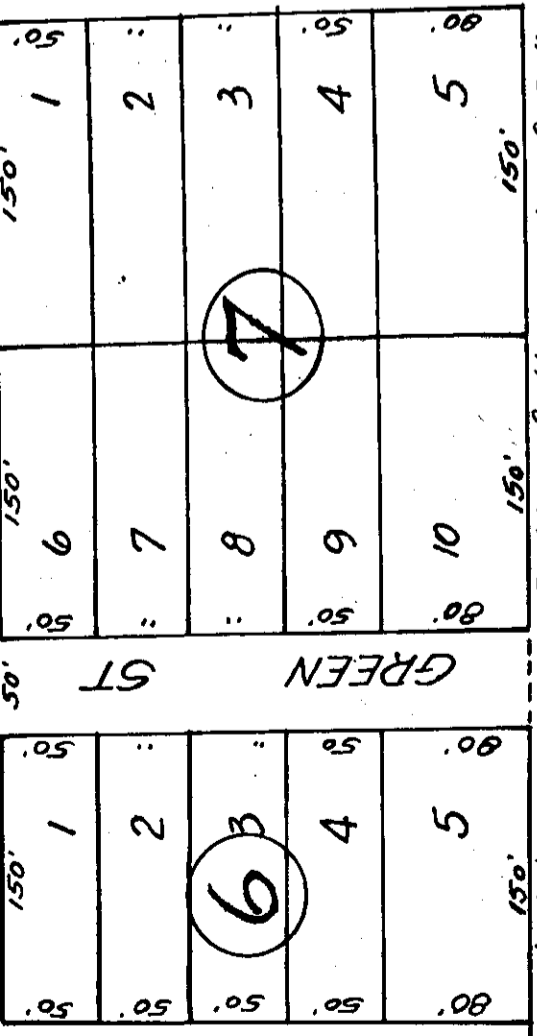
PADEN



ALSTON AVENUE



HARWELL

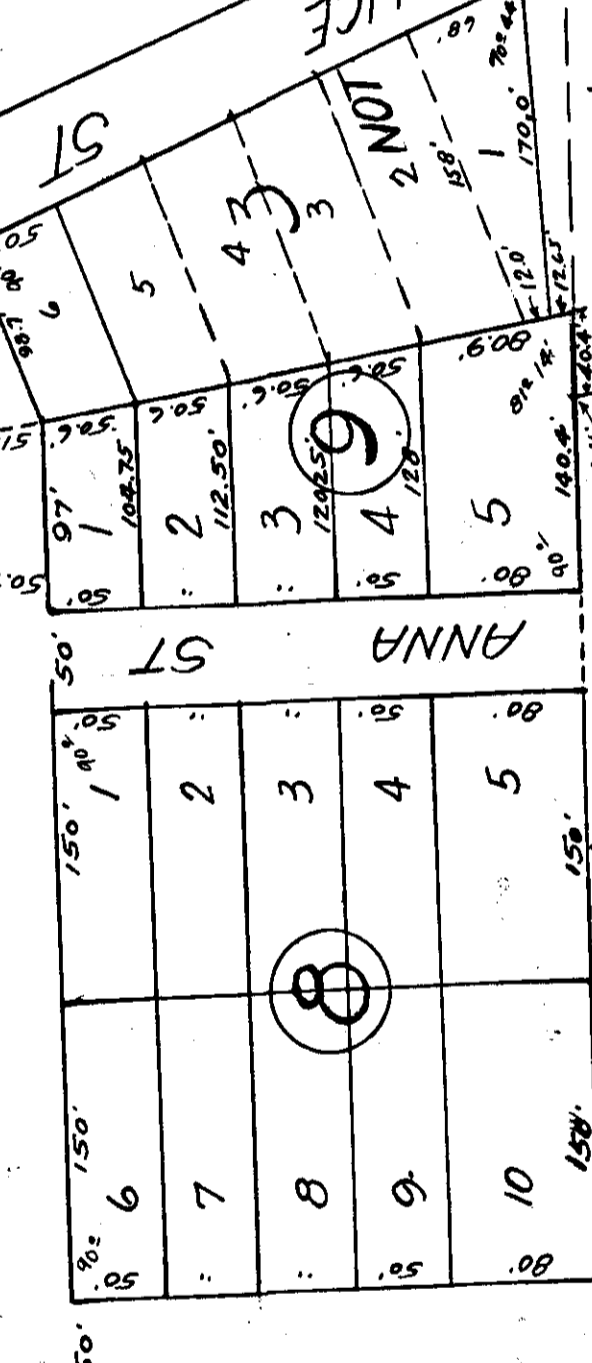
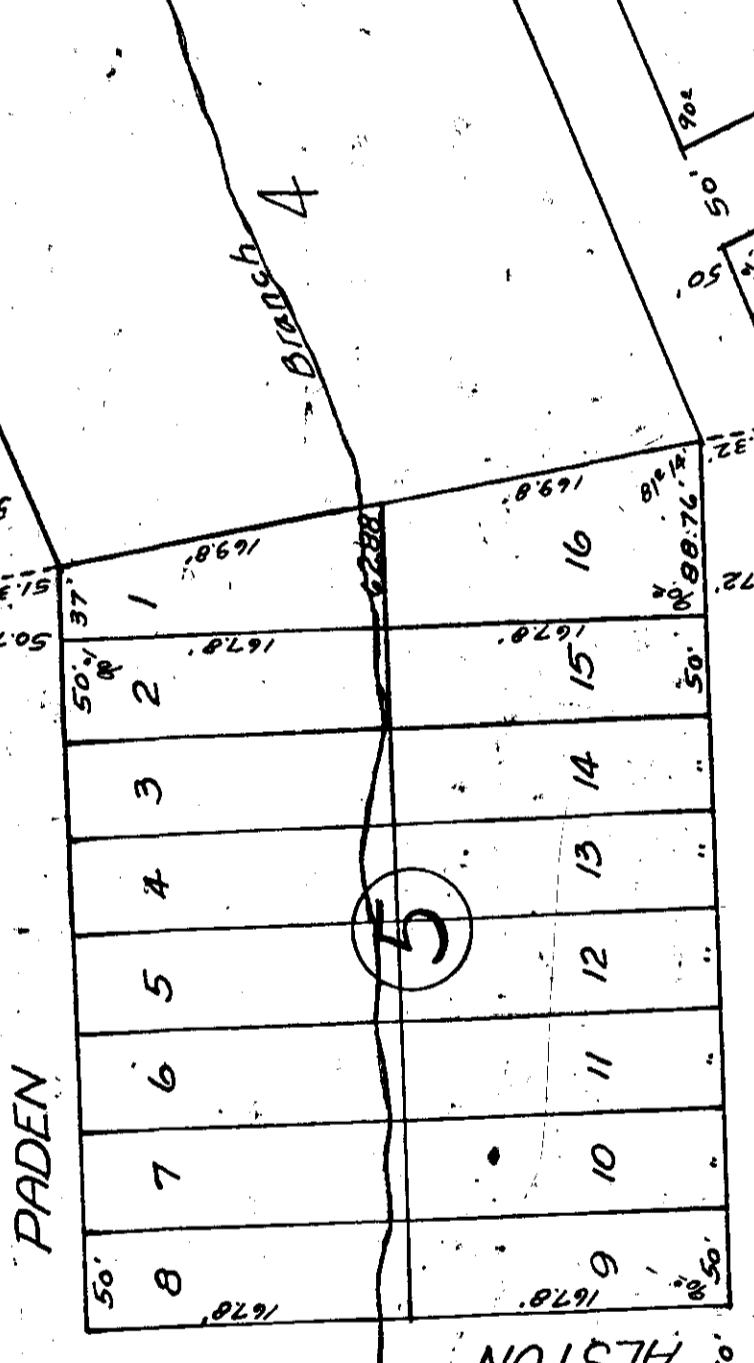


GREEN ST

50' Line of the NW 1/4 of SE 1/4 Section 10, Twp 12, S. R. 1 E.

BRANCH 4

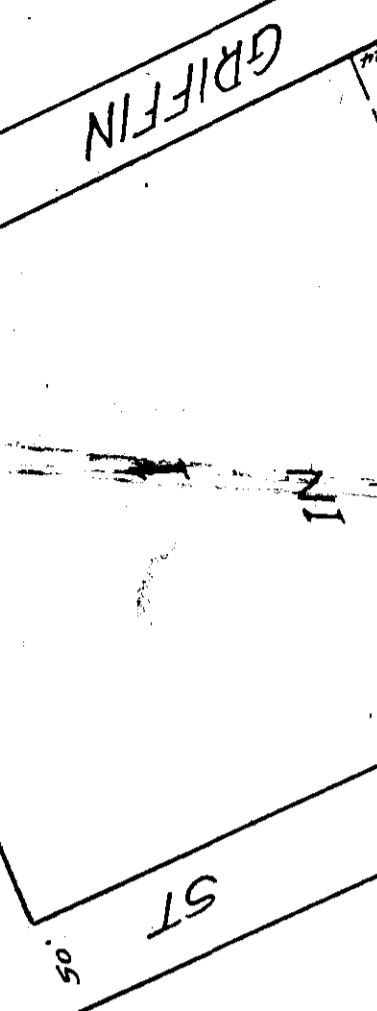
AVENUE



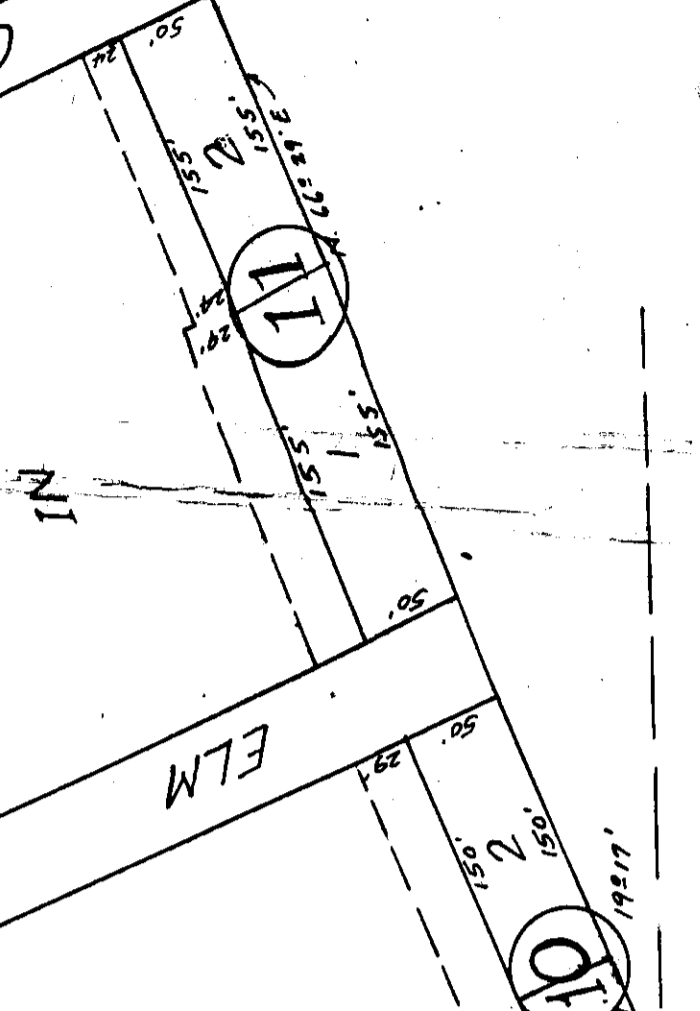
ALICE ST

50' Line of the NW 1/4 of SE 1/4 Section 10, Twp 12, S. R. 1 E.

AVENUE



ELM ST



INCLUDED



MINISTON

50' Line of the NW 1/4 of SE 1/4 Section 10, Twp 12, S. R. 1 E.