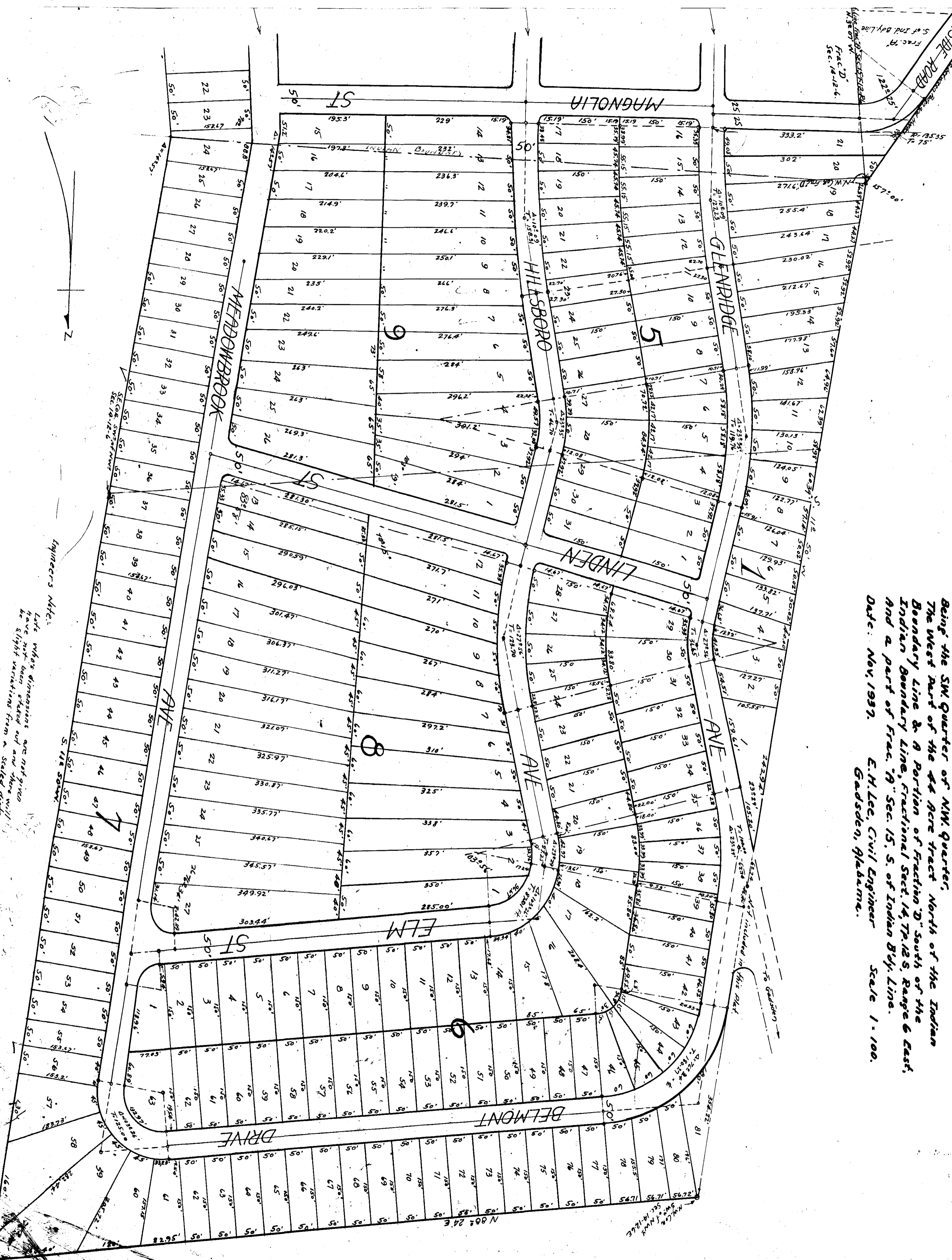


ROLLING GREEN PARK

Being the SW quarter of NW quarter, North of the Indian Boundary line & a portion of Fraction D" South of the Indian Boundary line, Fractional Sect. 14, T. 12 S., Range 6 East, and a part of frac. 9" Sec. 15, S. of Indian Bdy. line.

Date: Nov. 1937. E.H. Lee, Civil Engineer Gadsden, Alabama. Scale 1" = 100.



Engineer's Note:
 Note: When dimensions are not given
 have not been added and they will
 be slight variations from a scaled distance.
 E.H.L.