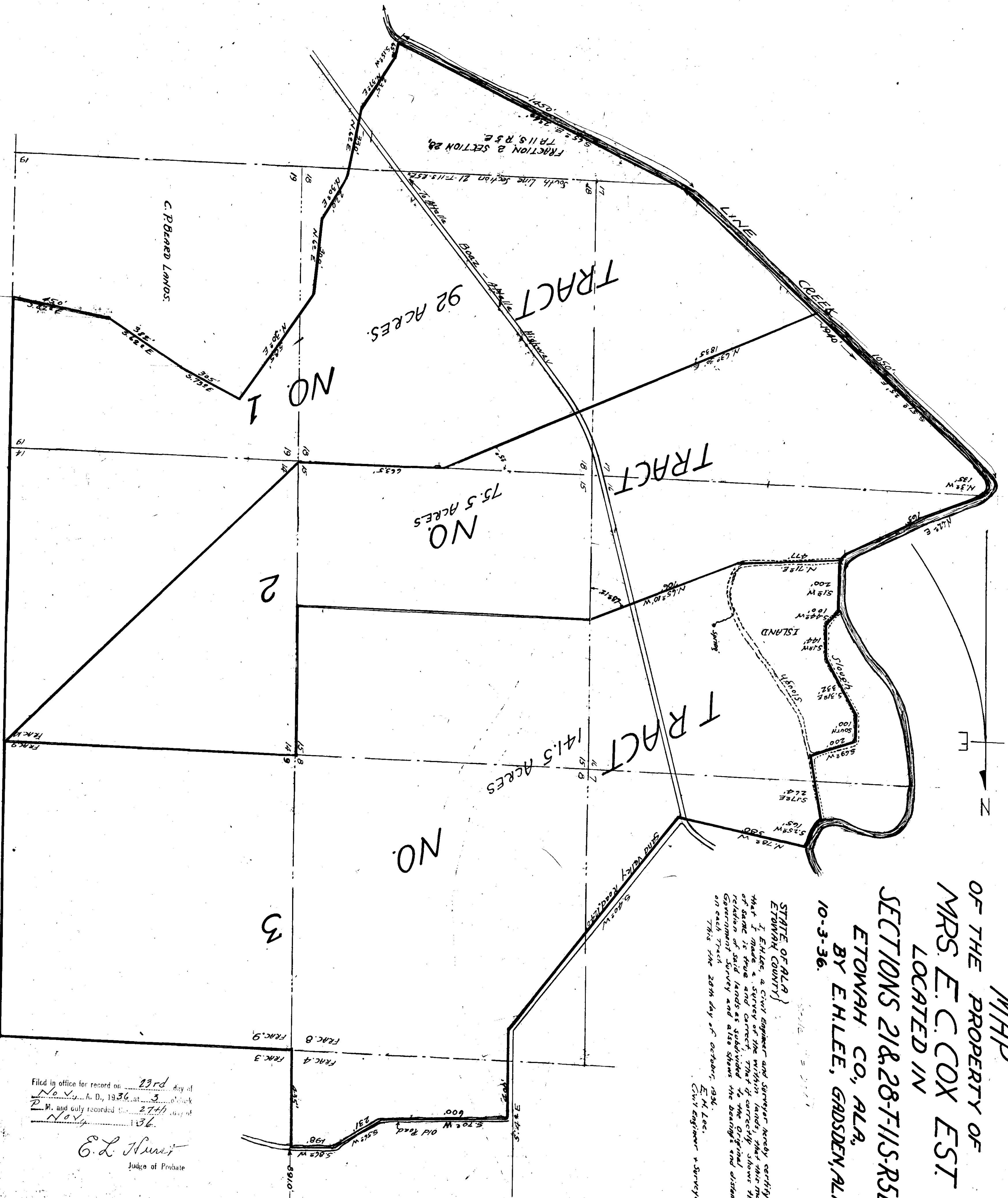


MAP  
 OF THE PROPERTY OF  
 MRS. E. C. COX EST.  
 LOCATED IN  
 SECTIONS 21 & 28-T-11-S-R5E  
 ETOWAH CO., ALA.  
 BY E. H. LEE, GADSDEN, ALA.  
 10-3-36.

STATE OF ALA.  
 ETOWAH COUNTY  
 I, E. H. Lee, a Civil Engineer and Surveyor hereby certify  
 that I made a Survey of the within lands, that have the  
 relation of said lands as subdivided by the original  
 Government Survey and also shown the bearings and distances  
 on each Tract.  
 This the 20th day of October, 1936.  
 E. H. Lee,  
 Civil Engineer & Surveyor



Filed in office for record on 29rd day of  
 No. 44, A. D., 1936, at 3 o'clock  
 P. M. and duly recorded on 27th day of  
 Nov. 1936.  
 E. L. Hunt  
 Judge of Probate