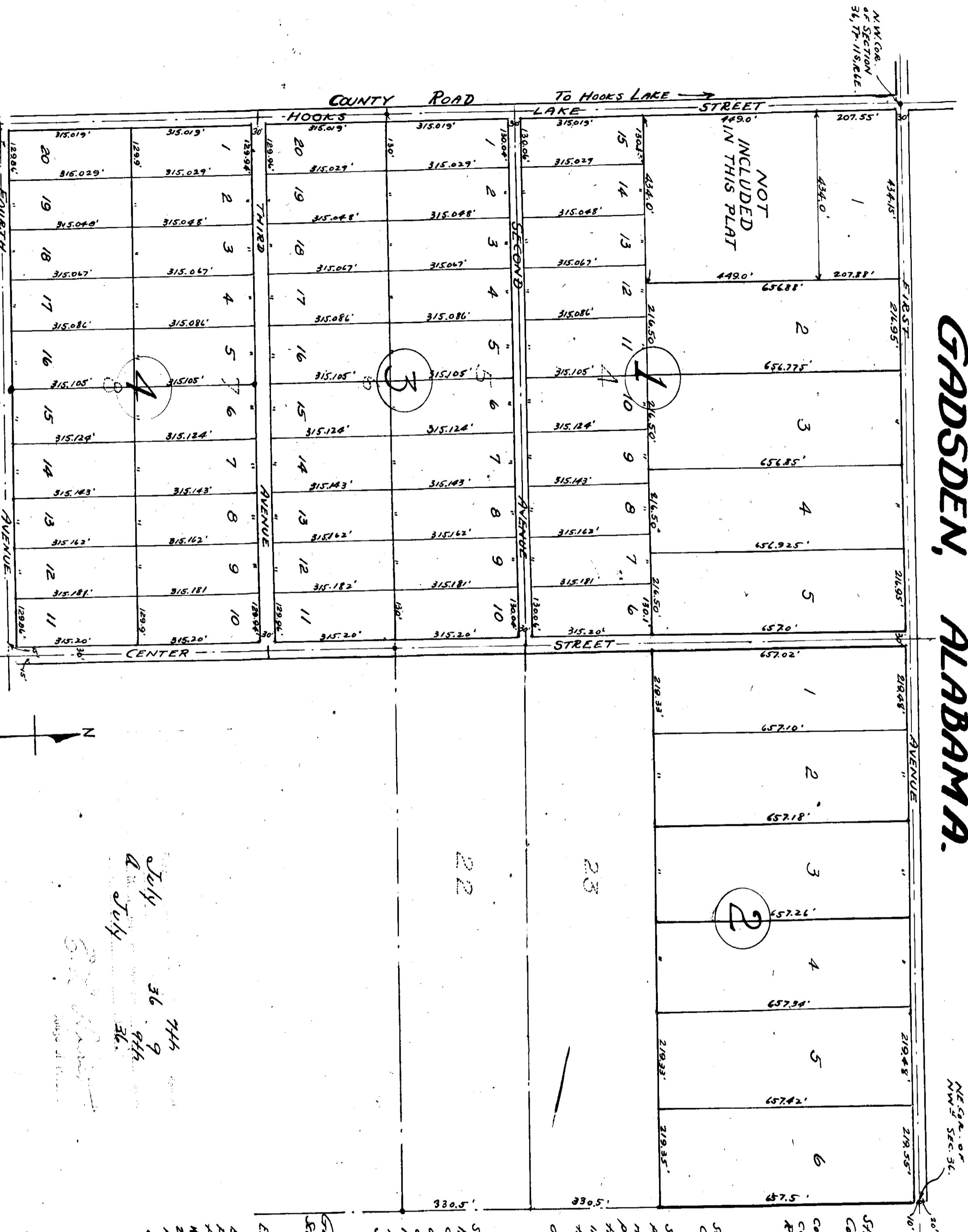


BRAINARD R. PEGRAM TRUSTEE
SUBDIVISION IN
SECTION 36 T11S, R6E, EMBRACING PART OF
NORTH HALF OF NW 1/4 OF NW 1/4 SECTION 36.
AND ALL OF LOTS 4, 5, 6, 7 & 8 OF THE
WARD-EWING SUBDIVISION
GADSDEN, ALABAMA.



State of Alabama }
 County of Etowah }

I, Brainard R. Pegram, Trustee, do hereby certify, confirm and do hereby dedicate to the public use, roads and driveways shown hereon for public use. This the 2nd day of July, 1936.
 Brainard R. Pegram, Trustee.

State of Alabama }
 County of Etowah }

I, Basbie J. Wilson, a Notary Public in and for said State and County, hereby certify that before me personally appeared Brainard R. Pegram, Trustee, whose name is signed to the foregoing instrument, and who is personally known to me, and acknowledged to me on this date, that being informed of the contents of said instrument he executed the same voluntarily, for and as the act of his own free will and accord.
 Given under my hand and seal on this the 2nd day of July, 1936.
 Basbie J. Wilson,
 Notary Public.

I, E.H. Lee, a Civil Engineer and Surveyor, who make a survey of the property embraced in the within map or plat, hereby certify that the said survey and plat is true and correct as therein represented, being a portion of the NW 1/4 of the NW 1/4 and all of lots 4, 5, 6, 7 and 8 of the Ward-Ewing subdivision as the same are shown of record in Book of town plats B, pages 284 and 289 of the Public Office of Etowah County, Ala., all in Section 36, T11S, R6E.
 This the 2nd day of July, 1936.
 E.H. Lee, CE & Surveyor

Gadsden, Ala.
 Scale: 1" = 200'

ENGINEER'S NOTE:
 The confirmation and adoption of this map by Brainard R. Pegram Trustee as owner, includes only those portions of the County Road or Hook's Lake Street, lying to Hook's Lake, which lie in the NW 1/4 of Section 36, and to Hook's Lake, which lie in the NW 1/4 of Section 36, and West of and adjoining Lots 1 and 17 in Block 4 of this Plat in Block 3, and Lots 1 and 20 in Block 8 of this Plat and along the ends of the avenues running East and West through this Plat.
 E.H. Lee, Engineer.

12 786
 6 09 2
 5 31
 2 19 3

12 99 1
 0 29 7
 4 94
 2 19 7

July 36 744
 2 July 944
 AC.