

MAP OF BRIARMEADE ESTATES ADDITION TO

GLENCOE, ETOWAH COUNTY, ALA.

Being a Subdivision of a Part of the NW of the NE of Section 30, Township 12, Range 7 East, in Etowah County, Ala. S1/4 at Auction March 17th, 1934, by the Exp. Auction Co., Gadsden, Ala.

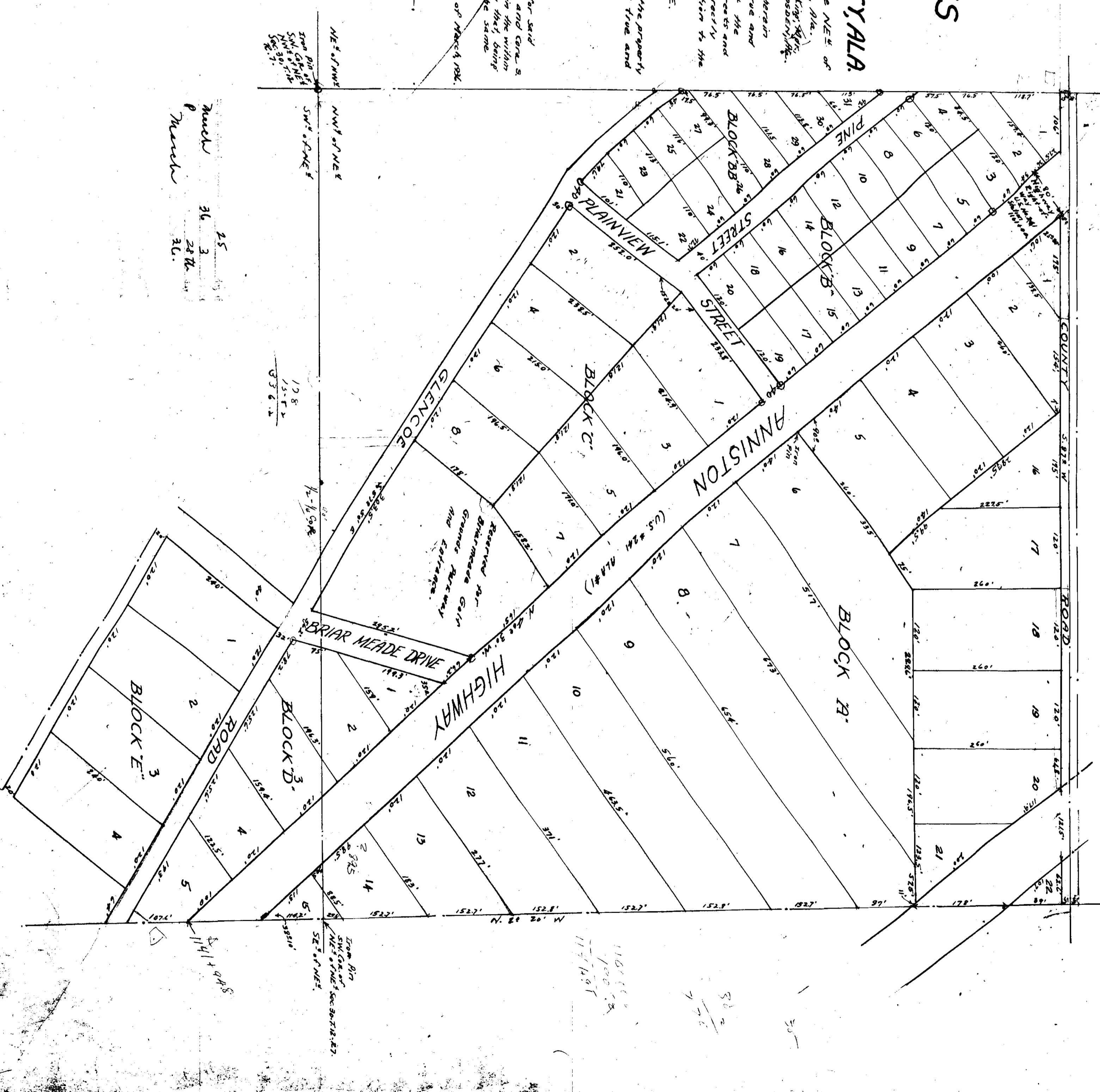
L.H. Part, Civil Engineer, who surveyed the property herein contained and made this map, hereby certifies that this is a true and correct survey and map of the property shown, that the bearings of the boundaries of the property, and the Streets and Easements are correctly shown, that lots and blocks are correctly numbered and dimensions correctly shown, that the relation to the Original Government Survey is correctly shown.

L.H. Part, C.E.

We, Carl S. Black and George Black, owners of the property herein shown, hereby certify and own this map as being true and correct.
Carl S. Black,
George Black.

State of Alabama }
Etowah County } I, David C. Bryant, Notary Public in and for said State and County, hereby certify that L.H. Part, Civil Engineer and Carl S. Black and George Black, owners of the property embraced in the within map and who are known to me, acknowledged before me on this day that, being duly sworn, they do hereby acknowledge that they executed the same voluntarily on the day the same were made.

Given under my hand and seal this 17th day of March, 1934.
David C. Bryant,
Notary Public.



Block 25
Block 24
Block 23
Block 22
Block 21
Block 20
Block 19
Block 18
Block 17
Block 16
Block 15
Block 14
Block 13
Block 12
Block 11
Block 10
Block 9
Block 8
Block 7
Block 6
Block 5
Block 4
Block 3
Block 2
Block 1