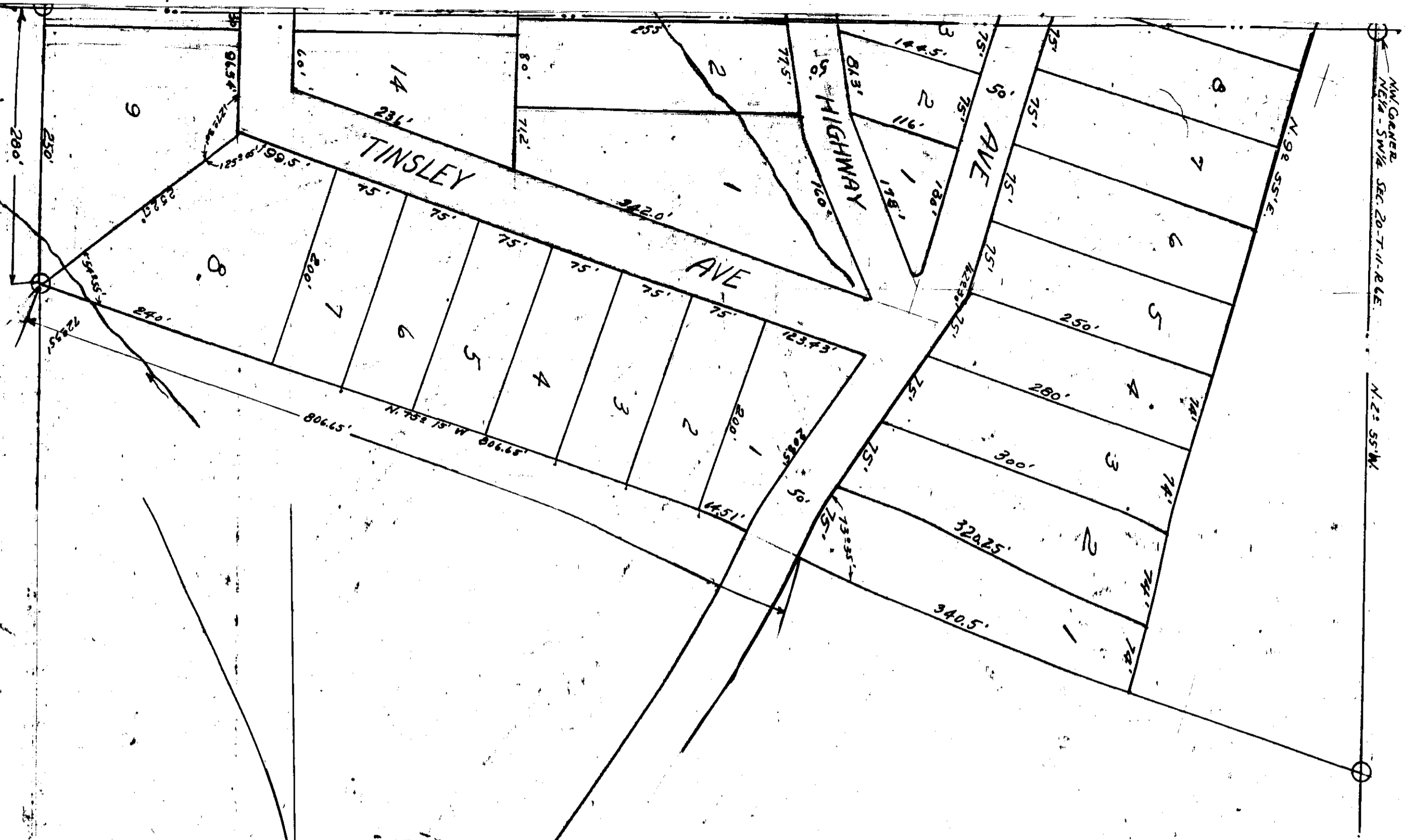


MOUNTAINVIEW PARK

Property of the Gadsden and Looctout Mountain Realty Co. in
Secs. 20 and 29 - T-11 S, R-6 - East.



The State of Alabama }
Etowah County }
I, W. T. Chason, a Notary Public in and for said County and State, hereby certify that W. W. Oyler, whose name as Civil Engineer, and E. G. Gadsden, President of the Gadsden and Looctout Mountain Realty Company, as owner of the lands shown on this map of plat, and who are known to me, acknowledged before me on the day that being informed of the contents of this conveyance, they executed same voluntarily on the day above bears date.

Given under my hand, this the 29th day of May, 1935.

W. T. Chason,
Notary Public.

I, W. W. Oyler, Civil Engineer, who made this map and surveyed the property contained herein, hereby certify that the map is correct, that it correctly shows the subdivisions into which the property is divided, it also shows each street and avenue and their names and widths, it also shows each lot and block and their numbers, length and width.

It also shows the relation of the same to subdivided to the original Government Survey, and the undersigned Gadsden and Looctout Mountain Realty Co. hereby ratifies and adopts the same as being correct.

Given under our hands the 24th day of May, 1935.

W. W. Oyler,
Civil Engineer
Gadsden and Looctout
Mountain Realty Co.
By E. G. Gadsden, Resident

1. To be annulled - Lots 1 to 24 inclusive, Block 1, shown in Plat Book C - Pages 120-131, recorded July 29, 1930.
2. Maps on Record - Blocks 1, 2 & 3 recorded in Plat Book C - Pages 130-131.
3. Block 4 recorded in Plat Book C - Page 163.
- Block 5 and Sequash Park recorded in Plat Book C - Page 163.
- Gadsden and Looctout Mountain Realty Co., owner.
By E. G. Gadsden, Resident.

Filed in office for record on 8/14/35
By G. L. Hunt, Notary Public
Etowah County, Alabama
1935

G. L. Hunt
Notary Public