

REARRANGEMENT OF BLOCK NO. 4 IN MOUNTAIN VIEW PARK SUBDIVISION

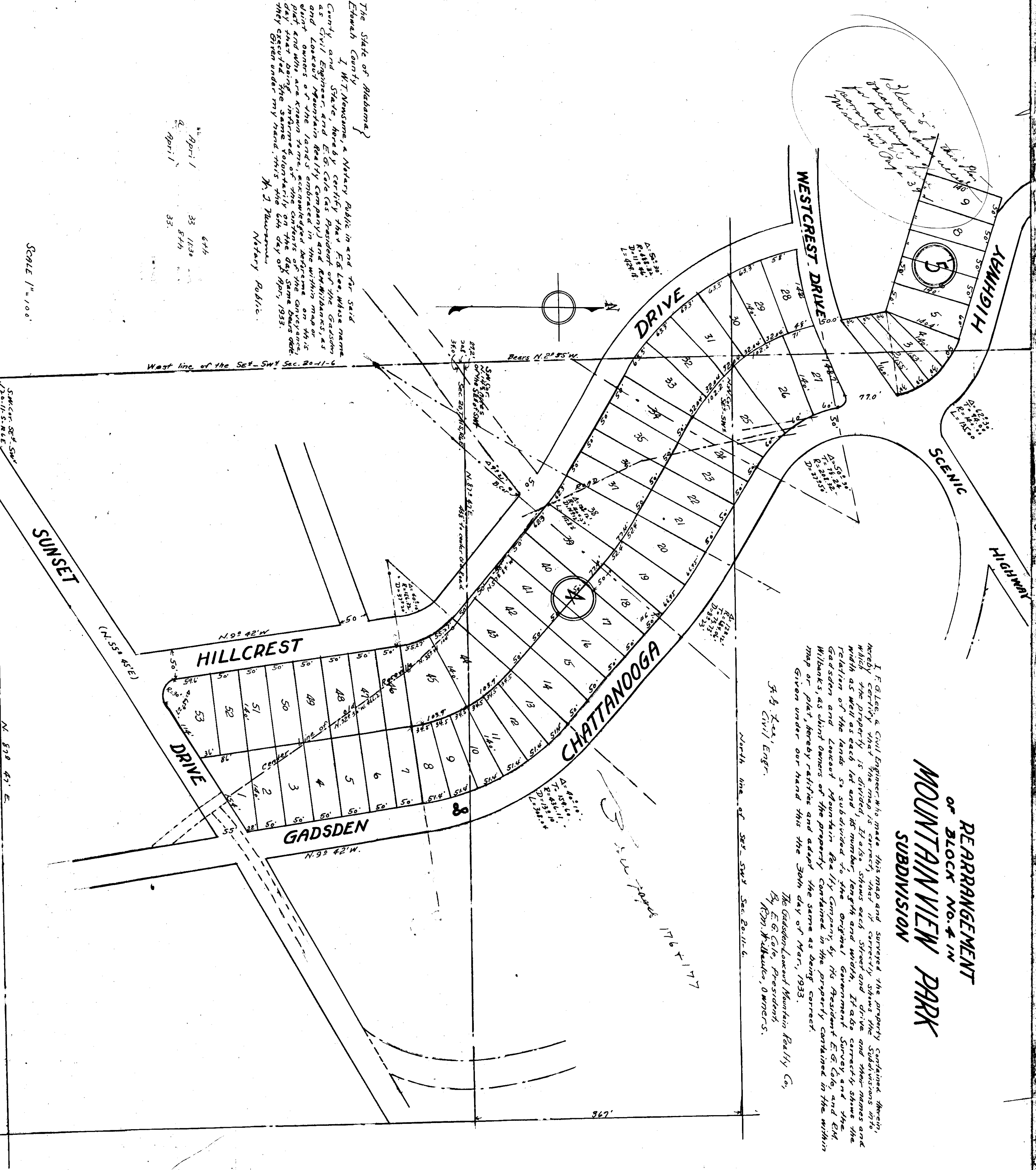
I, E. G. Lee, a Civil Engineer, who made this map and surveyed the property contained therein, hereby certify that the map is correct, that it correctly shows the subdivisions thereon, which are property of the State of Alabama, shows each street and alley and shows the width of each lot and subdivided to the original Government Survey and the relation of the lands to the original Mountain View Realty Company, by its President E. G. Lee, and the Gadsden and Lancoast Mountain Realty Company, by its President E. G. Lee, and the Mountain View Realty Company, as shown in the property contained in the property contained in the within map or plat, hereby ratifies and adopts the same as being correct.
Given under our hand this 30th day of May, 1933.

The Gadsden Mountain Realty Co.,
By E. G. Lee, President,
Kohn, K. Knebler, Owners.

J. B. Lee, Engr.

North line of Sec. SW 20, 11-6

176 x 177



The State of Alabama }
Ethan County }
I, W. T. Newsome, a Notary Public in and for said
County and State, hereby certify that E. G. Lee, whose name
as Civil Engineer, and Realty Company and K. M. Wilbanks, as
and Lancoast Mountain Realty Company, by its President E. G. Lee,
and owners of certain lands, acknowledged before me on this
day and who were present at the time of the same being
day created the same voluntarily on the day of May, 1933.
My given under my hand, this the 30th day of May, 1933.

W. T. Newsome,
Notary Public.

33	849	644
33	1138	
April 1		

SCALE 1" = 100'