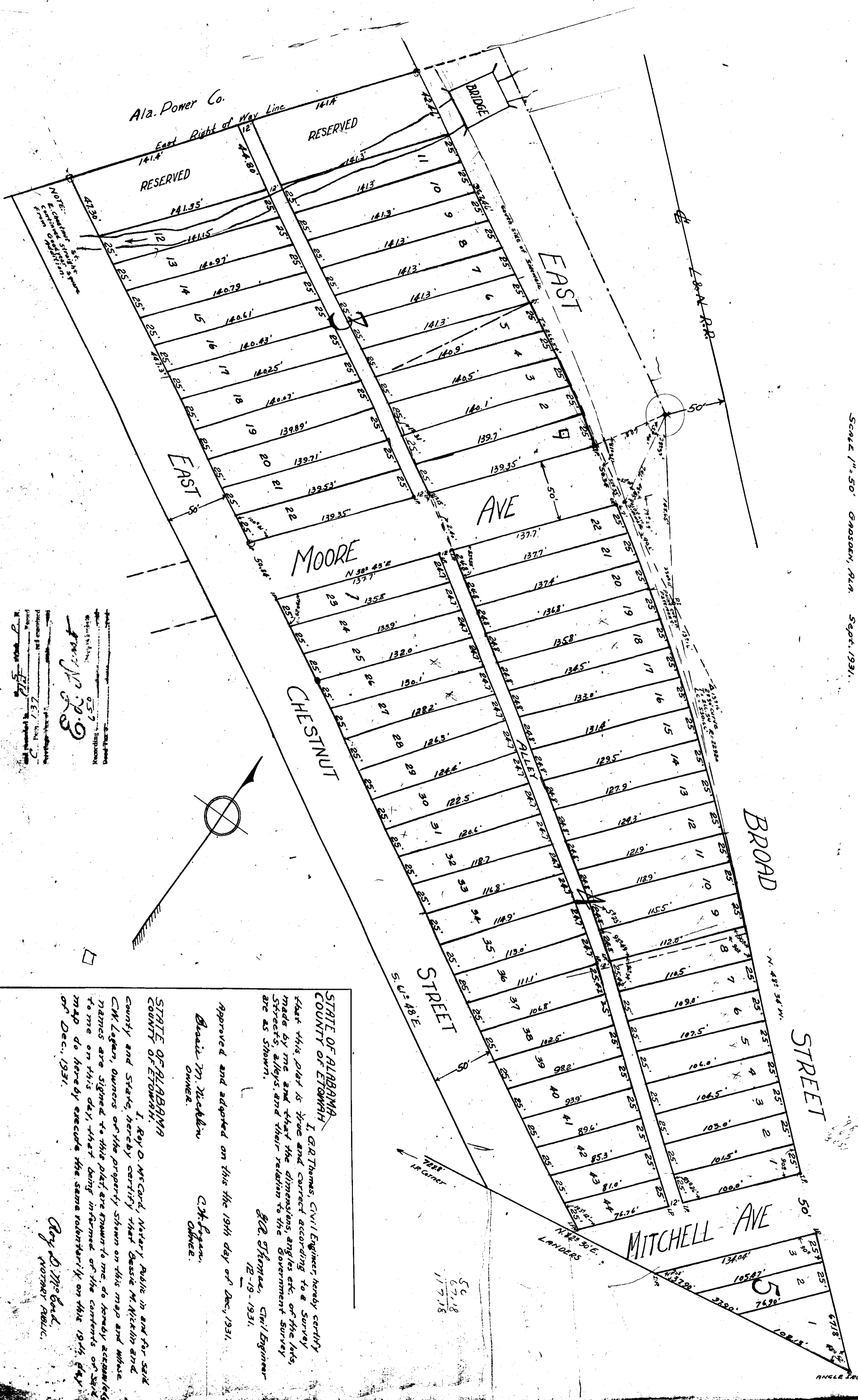


REARRANGEMENT

OF

JOE A LOGAN ADDITION

South of East Broad Street and (To) East of Railfower Co's E. Rt. of Way line
Being Parts of SE¹/₄ of NE¹/₄ & NW¹/₄ NE¹/₄ Sec. 10 - T. 15 - R. 12 E.
Office of G.R. Thomas, C.E.
Scale 1" = 50' OMAHA, ILL. Sept. 1931.



STATE OF ALABAMA
COUNTY OF ETOWAH

I, G.R. Thomas, Civil Engineer, hereby certify that this plat is true and correct according to a survey made by me and that the dimensions, angles etc. of the lots, streets, alleys and their relation to the Government survey are as shown.

G.R. Thomas, Civil Engineer
12-19-1931

Approved and adopted on this the 19th day of Dec., 1931.

David M. Muddlin, C.M. Mayor, Office.

C.H. Brown, Office.

STATE OF ALABAMA
COUNTY OF ETOWAH

I, Roy D. McCord, Notary Public in and for said County and State, hereby certify that David M. Muddlin and C.H. Brown, owners of the property shown on this map and whose names are signed to this plat are known to me, do hereby acknowledge to me on this day, that being informed of the contents of said map do hereby execute the same voluntarily on this 19th day of Dec., 1931.

Roy D. McCord, Notary Public.

The State of Alabama, Etowah County
I hereby certify that the within instrument was filed for record in the office for record
Dec. 19th, 1931.

Recorded by
137