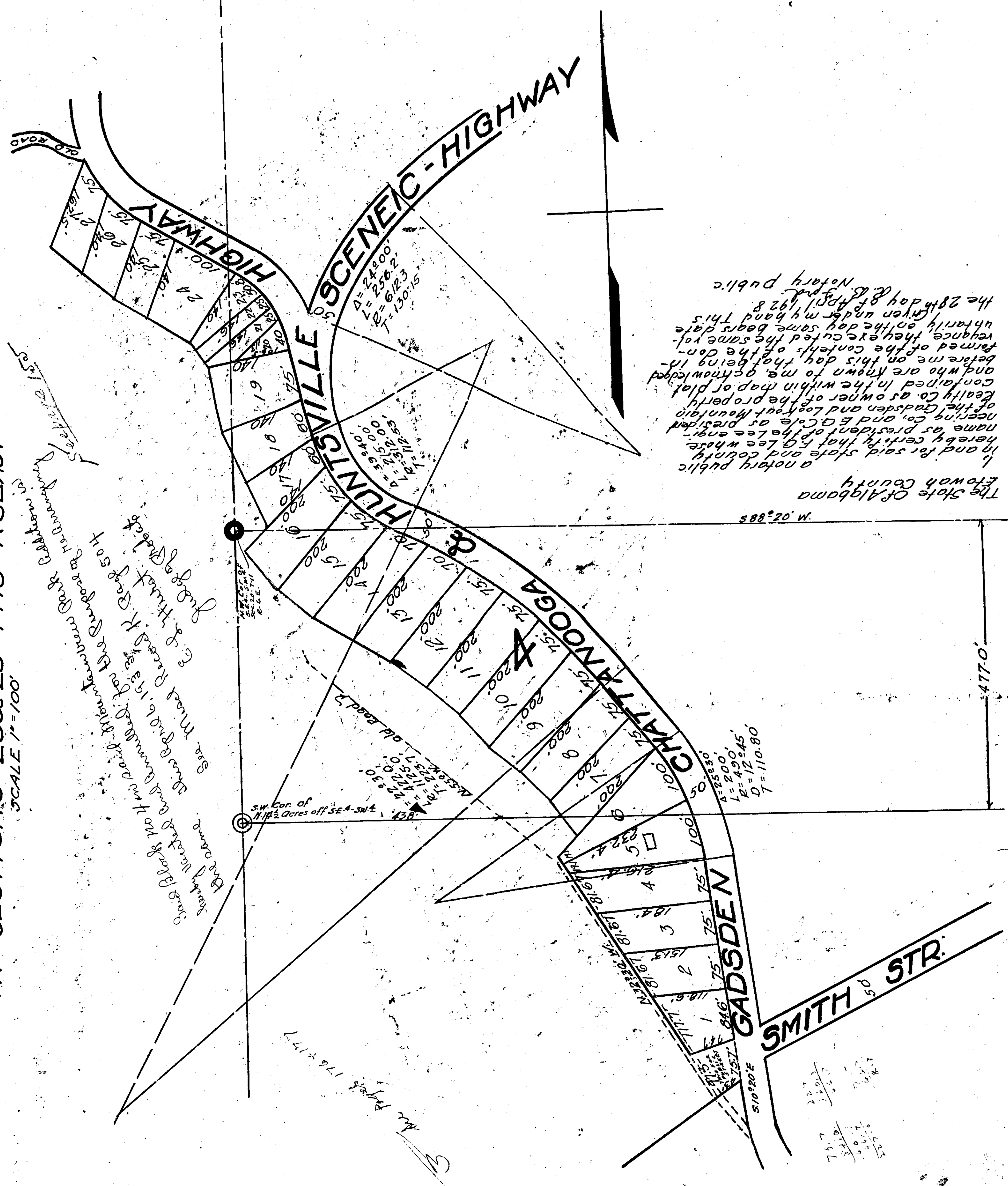


MAP OF
MOUNTAINVIEW - DARK
 PROPERTY OF THE GADSDEN AND LOOKOUT MOUNTAIN REALTY CO.
 IN SECTIONS 20 & 29 T11S-R06E
 SCALE 1"=100'



In and for said state and county, a notary public hereby certifies that the name as president of the Lee Engineering Co. and E. G. Cole as president of the Gadsden and Lookout Mountain Realty Co. as owner of the property contained in the within map or plat and who are known to me, as given in before me on this day that being in witness whereof I have hereunto set my hand and the seal of my office on the 28th day of April, 1928.

The State of Alabama
 Etowah County
 a notary public
 M. O. 2885
 6600 S. N. 28 50' W.
 Land Line 7
 4770

See Block 700 1/2 rd. Mt. Lookout Mountain Realty Co. for the purpose of returning to the same. See Block 700 1/2 rd. Mt. Lookout Mountain Realty Co. for the purpose of returning to the same. See Block 700 1/2 rd. Mt. Lookout Mountain Realty Co. for the purpose of returning to the same. See Block 700 1/2 rd. Mt. Lookout Mountain Realty Co. for the purpose of returning to the same.

3
 See page 176 & 177