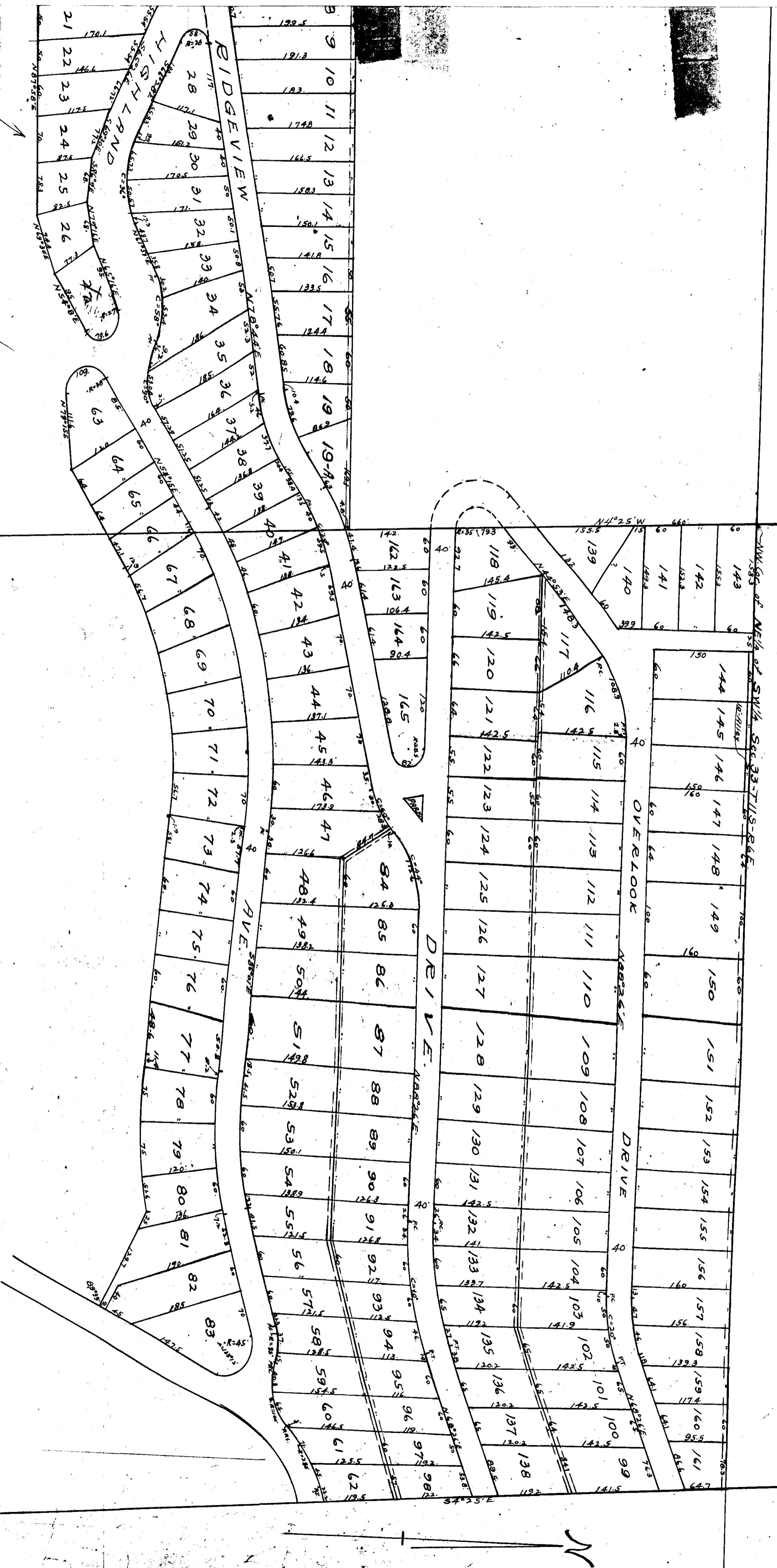


· MOUNTAIN · VIEW · ESTATES ·



For map showing deviation of expansion of Gadsden Ave. from West line of Sec. 33-11-6 Eastly across the NW 1/4 of SW 1/4 of said Sec. and along the South side of lots 20 to 27, inc. of this Plat, See Page 143 of this Book.

E. J. Hunt
Judge of Probate.