

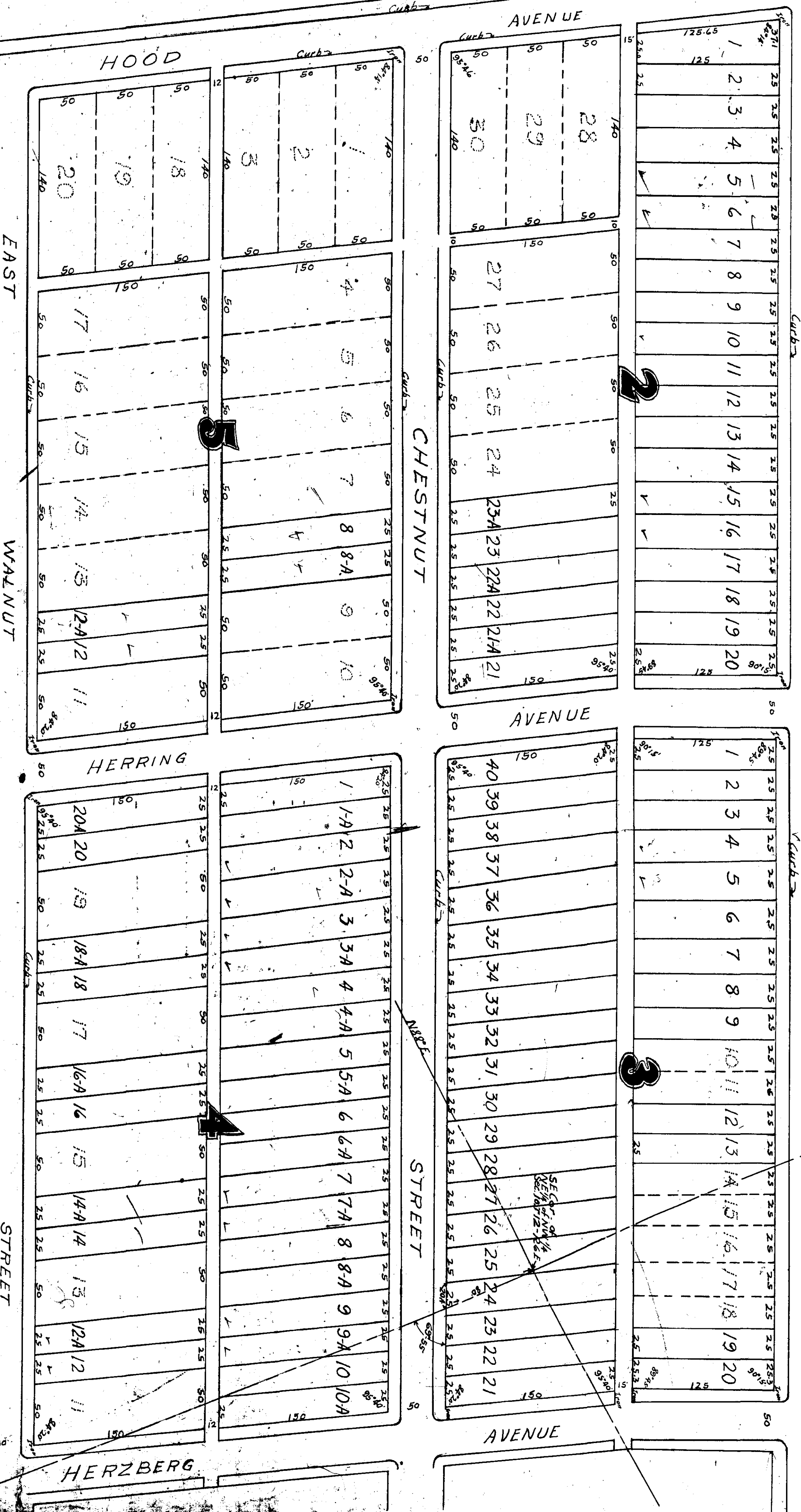
BLOCK 1.

EAST

BROAD

STREET

67



# GOODBYE AR SQUARE

of

Scale 1"=60' — December, 1928.



Plans of Resurvey and Re-division of Lots of Blocks 2, 3, 4 and 5 of East Broad Street Addition to Gadsden, Alabama, which is recorded in Plat Record C, Page 14, in the Office of the Probate Judge of Etowah County, Ala.

BETHEL W. WHITSON, C.E.  
Civil Engineer - Surveyor  
BIRMINGHAM, ALA.

