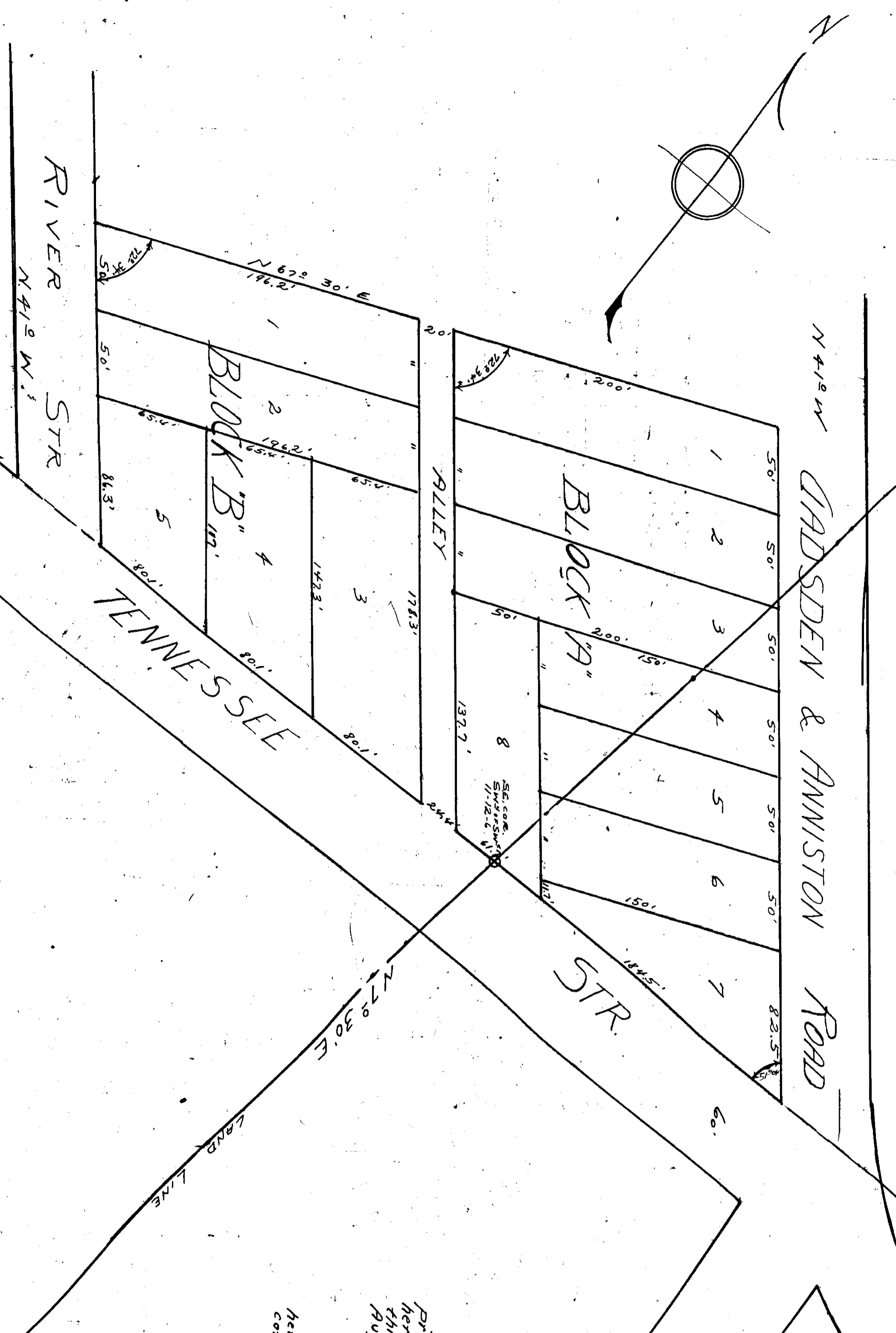


MAP OF W.D. ADAMS SUB-DIV.

Being a Subdivision of Lots 15-16 & 17 of Block 3, Bishop's Add.,
for East Gadsden, Fla.



I, T.E. Watford, a Civil Engineer, who surveyed the property contained herein, and who subdivided same, do hereby certify to the same being correct as shown on this map. Given under my hand this 3rd day of Aug, 1926.
Signed: T.E. Watford, C.E.

I, W.D. Adams, Owner of the property contained herein, hereby ratify and adopt this map as being true and correct.
Given under my hand this 3rd day of Aug, 1926.
Signed: W.D. Adams, Owner.

STATE OF ALABAMA
ETWING COUNTY

I, H.B. Odell, a Notary Public, in and for said State and County, hereby certify that before me, on the 3rd day of August, 1926, in my presence, the above named T.E. Watford and W.D. Adams, who are known to me to be the persons whose names are subscribed to the contents of this map and survey, they executed the same in and for the purposes therein stated, and that the same were under my hand and seal this 3rd day of August, 1926.
H.B. Odell, Notary Public.

Scale: 50' = 1"

N.B. All Lots Have Iron Pins at Corners.

The State of Alabama, Etowah County,
I hereby certify that the within instrument was filed in this office for record on the 30th day of August, 1926, at 4:27 P.M. and recorded in Book 31, Page 147 and examined and returned to me on the 31st day of August, 1926.
J. W. Hester, Clerk of Court.

T.E. Watford, C.E., Box 227
Gadsden, Fla.