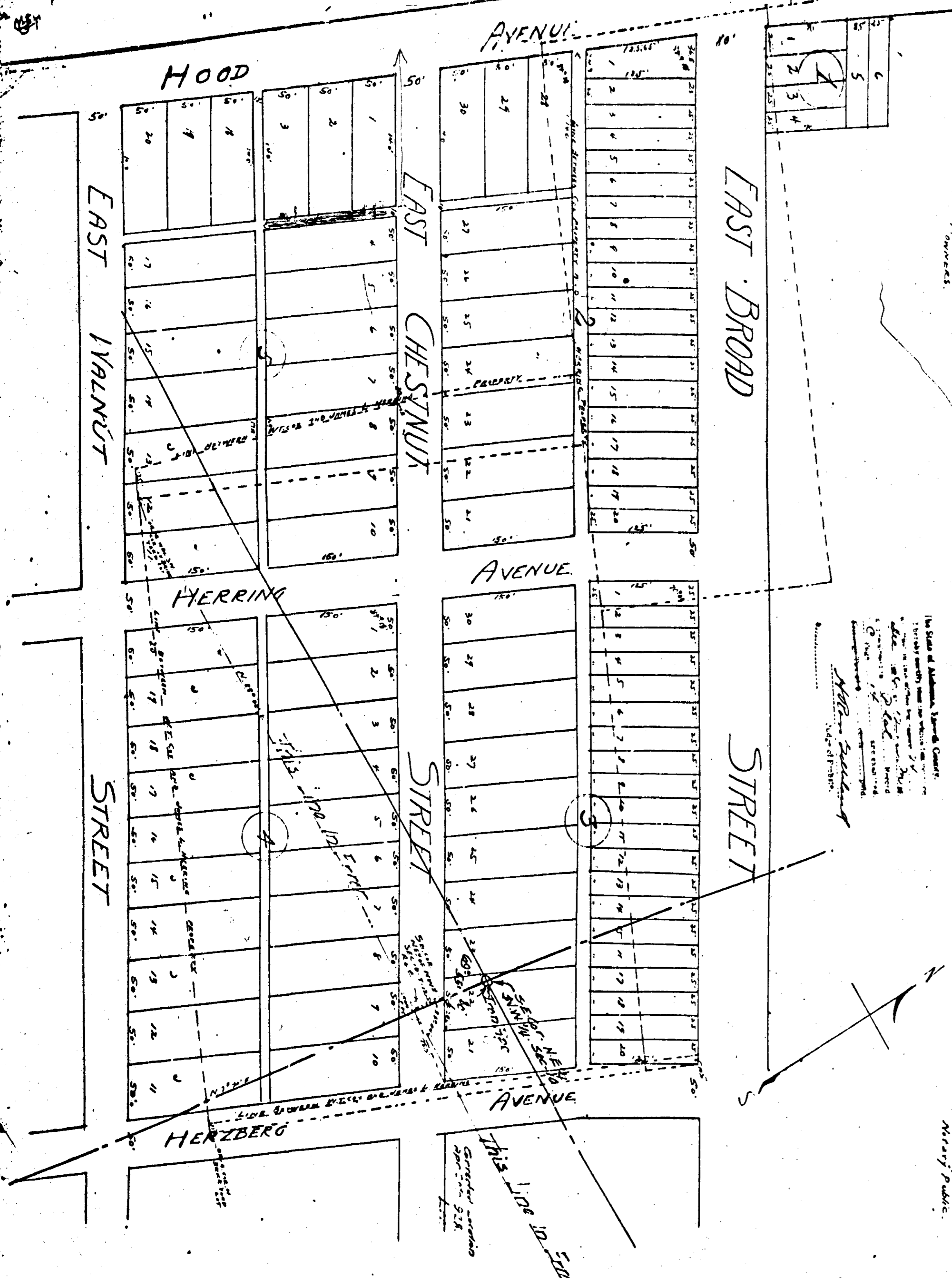


MAP  
OF  
EAST BROAD STREET ADDITION  
GADSDEN, ALA.



VACATION OF ALLEY-NISC 118  
Page 363

I, *[Name]*, Surveyor, do hereby certify that the above described streets and lots have been surveyed and laid out in accordance with the plan and specifications filed in the office of the Surveyor General of the State of Alabama, and that the same are now open to the public use of the people of the State of Alabama, and that the same are now open to the public use of the people of the State of Alabama, and that the same are now open to the public use of the people of the State of Alabama.

The State of Alabama, Surveyor General,  
do hereby certify that the above described streets and lots have been surveyed and laid out in accordance with the plan and specifications filed in the office of the Surveyor General of the State of Alabama, and that the same are now open to the public use of the people of the State of Alabama, and that the same are now open to the public use of the people of the State of Alabama.

The State of Alabama,  
do hereby certify that the above described streets and lots have been surveyed and laid out in accordance with the plan and specifications filed in the office of the Surveyor General of the State of Alabama, and that the same are now open to the public use of the people of the State of Alabama, and that the same are now open to the public use of the people of the State of Alabama.