

MAP OF
**HUGO H. HECHT'S LOT, BEING IN THE
 SE. COR. OF TUSCALOOSA AND NORTH STB**
 SCALE 1"=20'

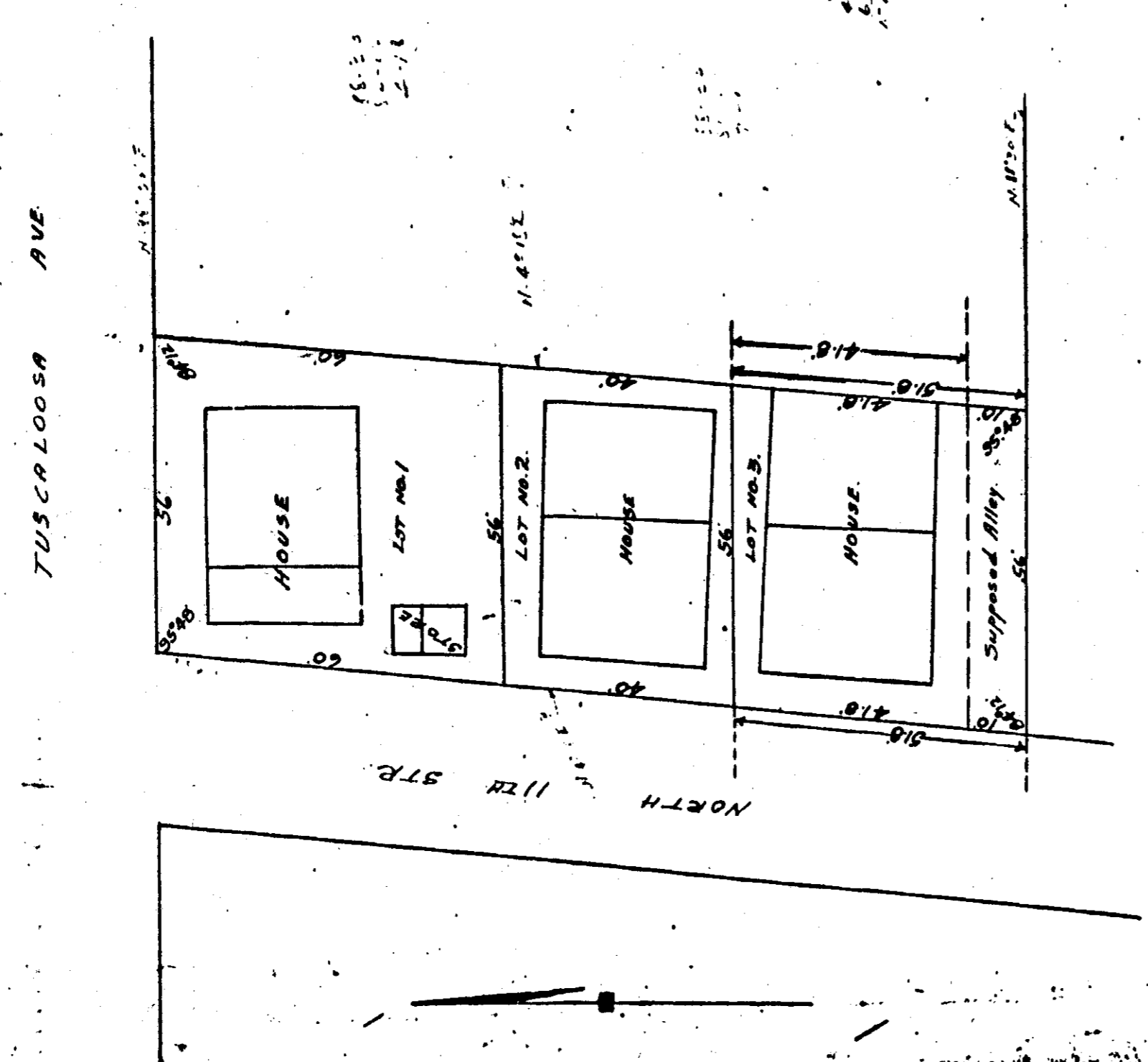
I hereby certify this map to be true and correct as surveyed by me according to the best of my knowledge and belief.
 Signed: J. E. [unclear], C.E.

I, Hugo H. Hecht, owner of the property contained in the within map or plat, hereby certify that I adopt the same as being correct.
 Signed: Hugo H. Hecht, [unclear]

Sworn to before me this [unclear] day of [unclear], 1929.
 J. E. [unclear], Judge of Probate.

Note: This property of supposed Alley is returned with plat No. 3. If opened Lot No. 3 will have a width of 41.8 - otherwise it will remain a width of 51.6 as shown.

The State of Alabama, Etowah County.
 I hereby certify that the within plat is a true and correct copy of the original plat as recorded in the office of the Register of Deeds for Etowah County, Alabama, on the [unclear] day of [unclear], 1929.
 Signed: [unclear], Register of Deeds.



71.6
 41.8
 51.6