

# MAP OF ARGYLE PLACE ADDITION TO GADSDEN, ALA.

Being a portion of the SW 1/4 of NW 1/4 and SE 1/4 of NW 1/4 and the NE 1/4 of SW 1/4 and NW 1/4 of SW 1/4 of Section 9 Tp 12 S R 6 E and containing 14.68 Acres and being also a rearrangement of Blocks 2 & 5 except Lot 1 - Blk 2. Also Lots 1, 2, 3, 8, 10, 11, 12, 13, 14, & 15 Turrentine Park Addition. Also Block 'C' of the M. A. Stocks Addition.

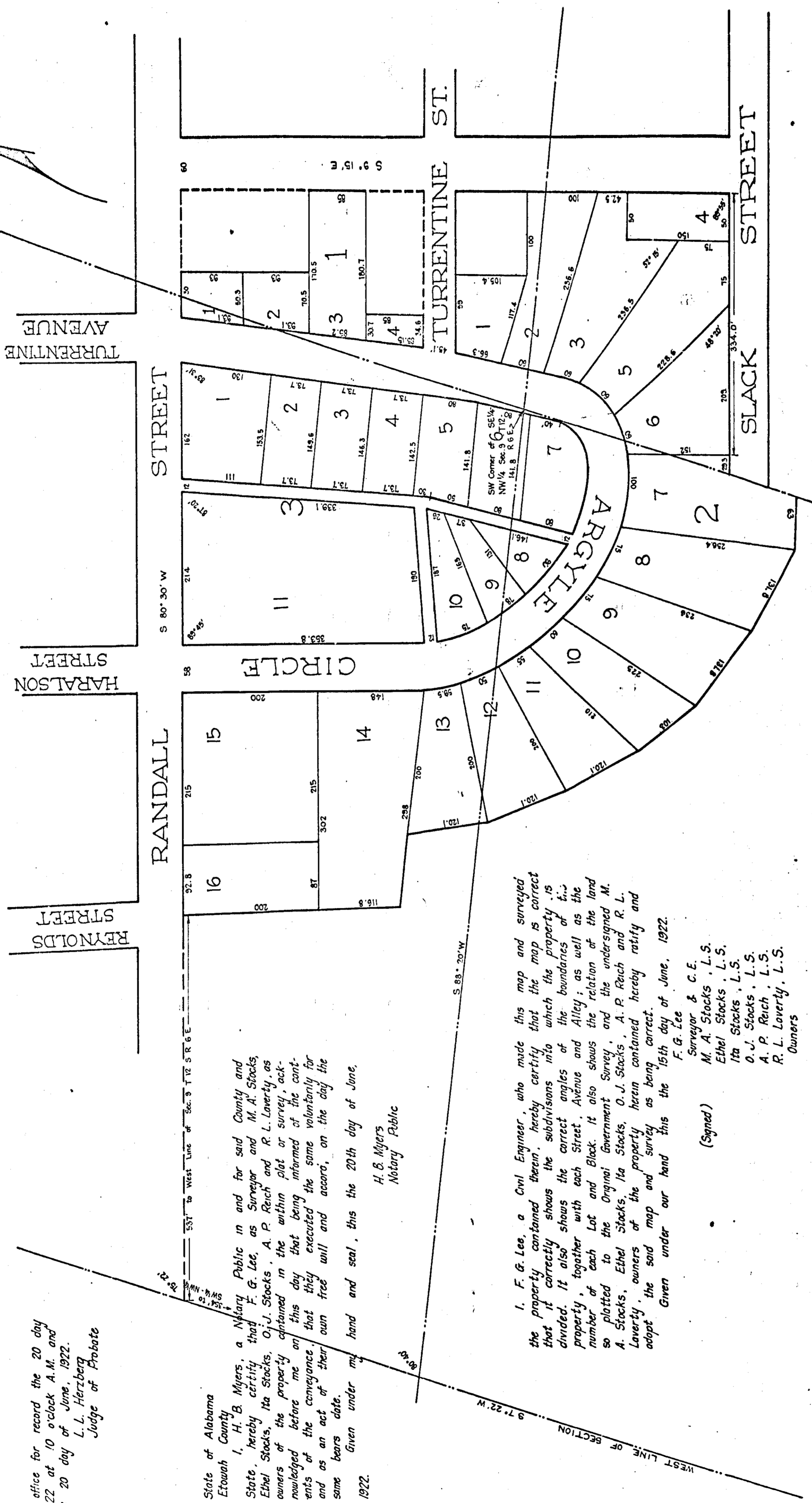
Filed in my office for record the 20 day of June, A. D. 1922 at 10 o'clock A. M. and duly recorded the 20 day of June, 1922.  
L. L. Herzberg  
Judge of Probate

State of Alabama  
Etowah County

I, H. B. Myers, a Notary Public in and for said County and State, hereby certify that F. G. Lee, as Surveyor and M. A. Stocks, Ethel Stocks, Ita Stocks, O. J. Stocks, A. P. Reich and R. L. Loverly, as owners of the property contained in the within plat or survey, acknowledged before me on this day that being informed of the contents of the conveyance that they executed the same voluntarily for and as an act of their own free will and accord, on the day the same bears date.

Given under my hand and seal, this the 20th day of June, 1922.

H. B. Myers  
Notary Public



I, F. G. Lee, a Civil Engineer, who made this map and surveyed the property contained therein, hereby certify that the map is correct that it correctly shows the subdivisions into which the property is divided. It also shows the correct angles of the boundaries of the property, together with each Street, Avenue and Alley; as well as the number of each Lot and Block. It also shows the relation of the land so platted to the Original Government Survey and the undersigned M. A. Stocks, Ethel Stocks, Ita Stocks, O. J. Stocks, A. P. Reich and R. L. Loverly, owners of the property herein contained hereby ratify and adopt. Given under our hand this the 15th day of June, 1922.

F. G. Lee & C. E.  
M. A. Stocks, L. S.  
Ethel Stocks, L. S.  
Ita Stocks, L. S.  
O. J. Stocks, L. S.  
A. P. Reich, L. S.  
R. L. Loverly, L. S.  
Owners

(Signed)