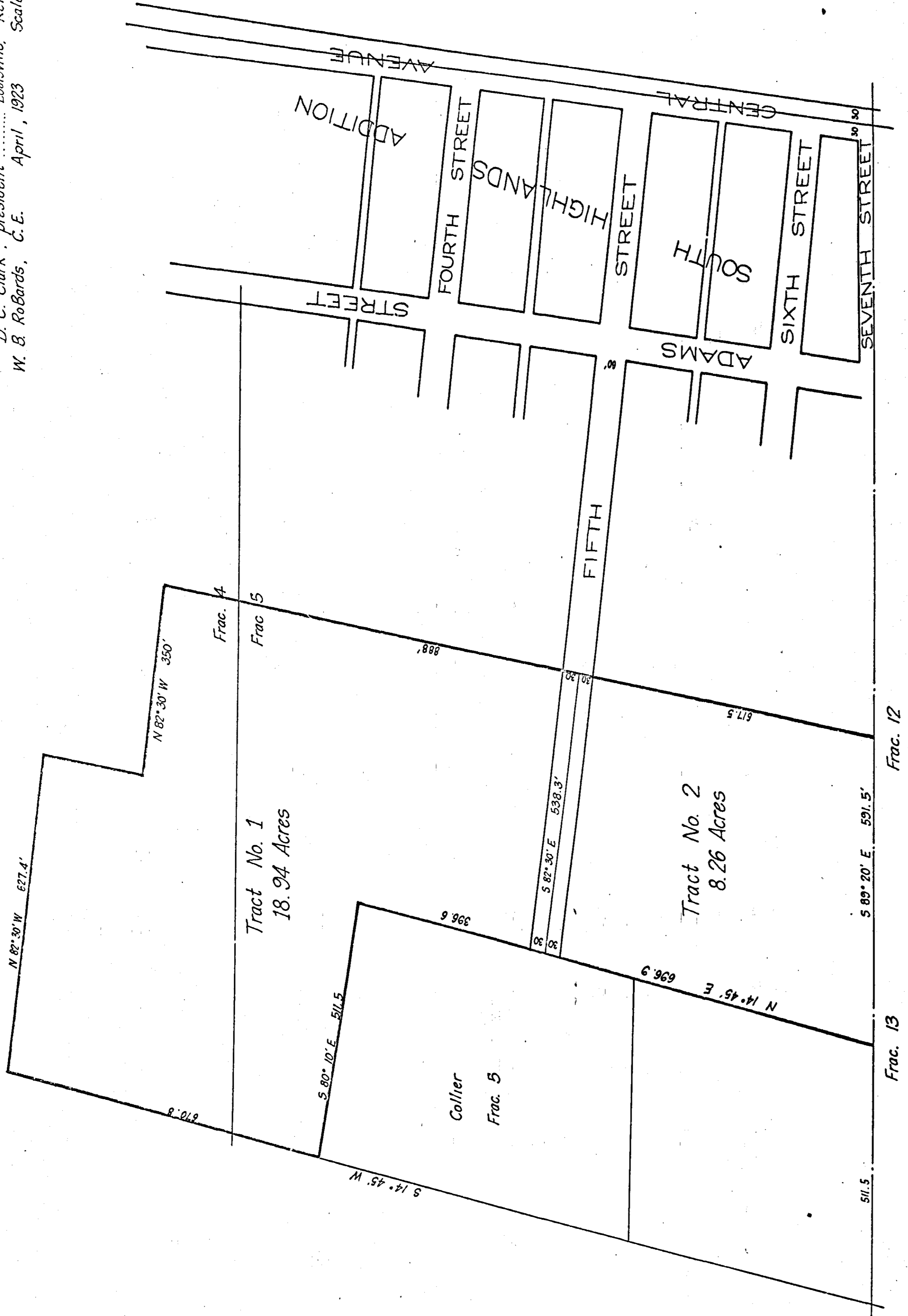


SUBDIVISION OF
THE MANN ESTATE

Being parts of Fractions 4-5-11 & 15 T 12 S R 6 E
Etawah County near Gadsden, Alabama by:
Louisville Real Estate & Development Company
D. C. Clark, president Louisville, Kentucky
W. B. Roberts, C.E. April, 1923 Scale: 1"=150'

SEE PAGE 365



We the undersigned, Bertha Mann, Fannie Mann and
Blanche Mann, the owners of all the lands as shown
enclosed in red lines of the within plat or map
do hereby ratify and accept said map or plat as
being correct.
W. Green under our hands and seals this - day of -
1923. - Mann