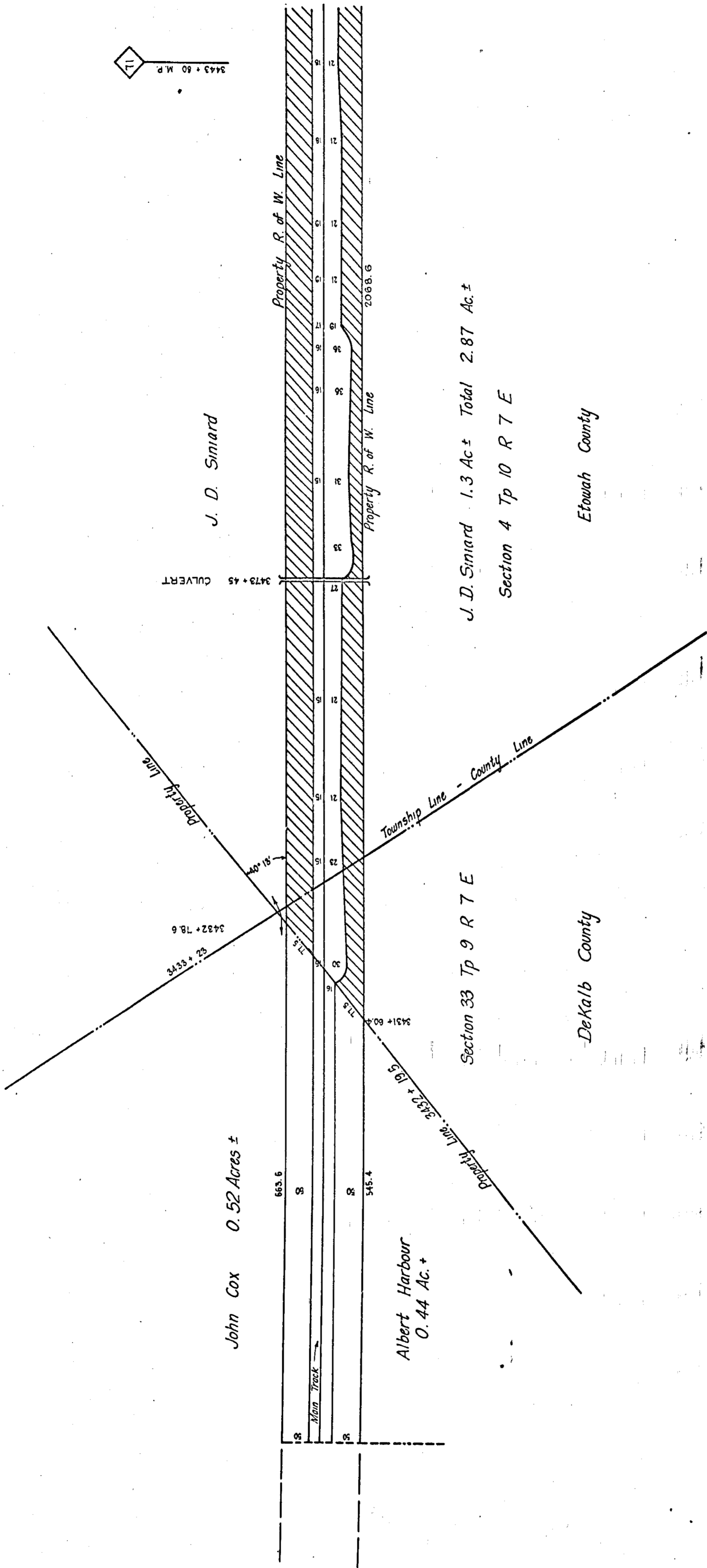


See Page 347



J. D. Simard

J. D. Simard 1.3 Ac ± Total 2.87 Ac. ±  
Section 4 Tp 10 R 7 E

Etowah County

Section 33 Tp 9 R 7 E

DeKalb County

John Cox 0.52 Acres ±

Albert Harbour  
0.44 Ac. ±

663.6

345.4

3432 + 78.6

3433 + 33.6

3431 + 60.2

3432 + 19.5

31.47

31.47

3473 + 45 CULVERT

Property R. of W. Line

Property R. of W. Line

2088.6