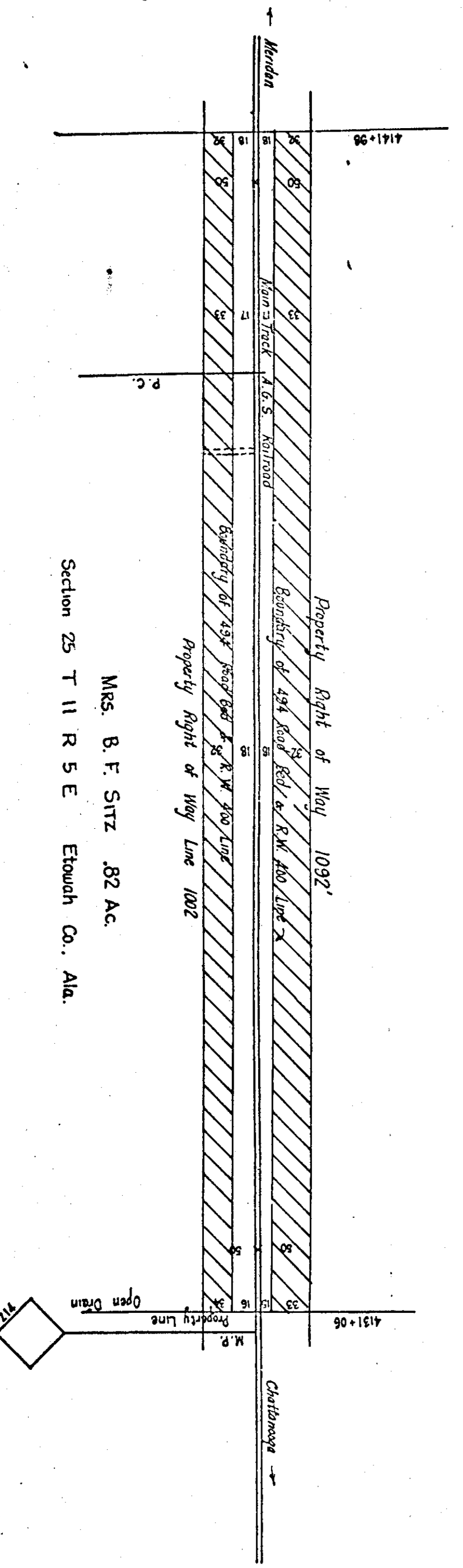
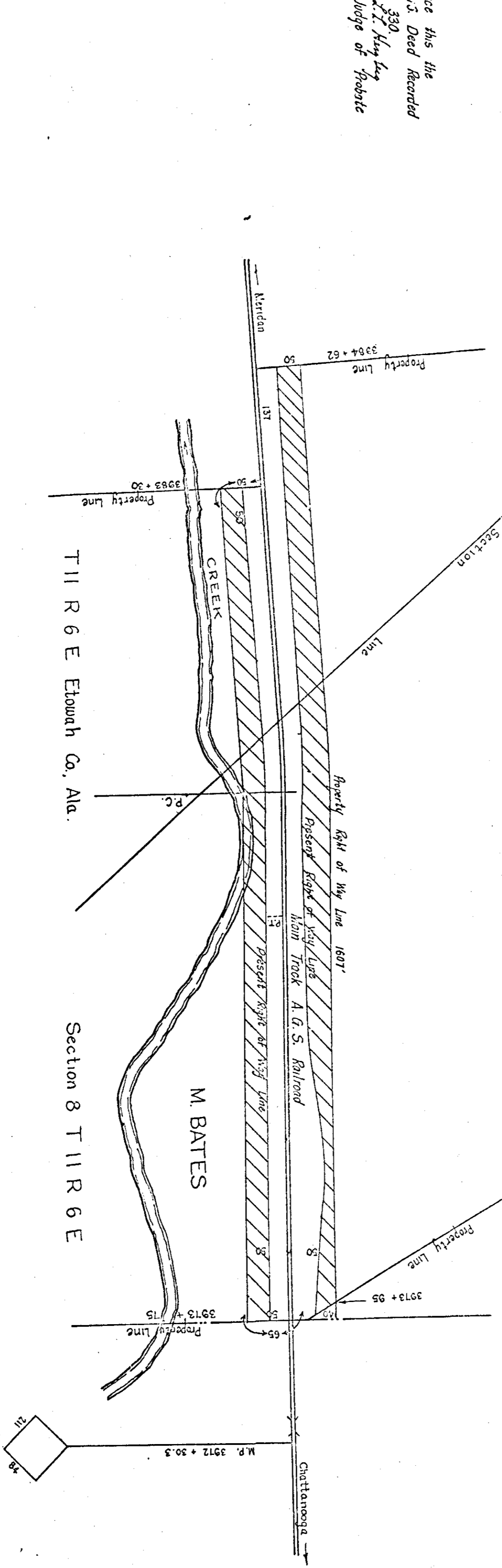


M. Bates Total 1.28 Acres
Alabama Great Southern Railroad - Mile - 82
Map Showing Land to be Acquired from M. Bates
Scale 1"=100' Office of Asst Engr August 17, 1914.
H. H. W.

Filed in Probate Office this the
25th day of April, 1915. Deed Recorded
in final record I pp. 330
J. T. H. W. Engr
Judge of Probate



Mrs. B. F. Sitz .81 Acres Parcel 'B' Total 1.63 Acres
Alabama Great Southern Railroad Company - Mile 85
Proposed Land to be acquired from Mrs. B. F. Sitz.
Scale 1"=100' Office of Asst Engr December 18, 1915.