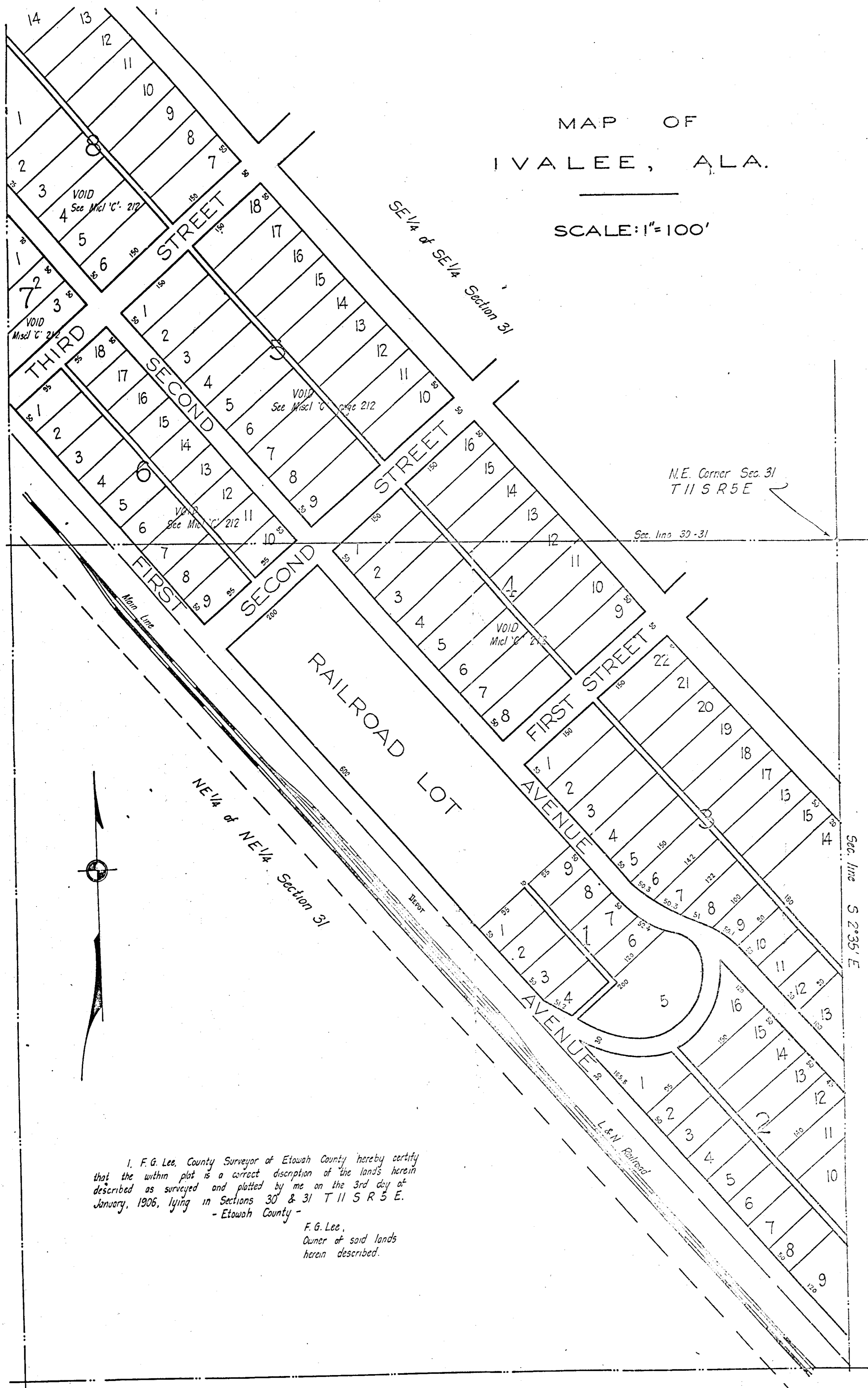


MAP OF
IVALEE, ALA.

SCALE: 1" = 100'



N.E. Corner Sec. 31
T 11 S R 5 E

Sec. line S 2° 36' E

Sec. line S 2° 36' E

I, F. G. Lee, County Surveyor of Etowah County hereby certify
that the within plat is a correct description of the lands herein
described as surveyed and platted by me on the 3rd day of
January, 1906, lying in Sections 30 & 31 T 11 S R 5 E.
- Etowah County -

F. G. Lee,
Owner of said lands
herein described.