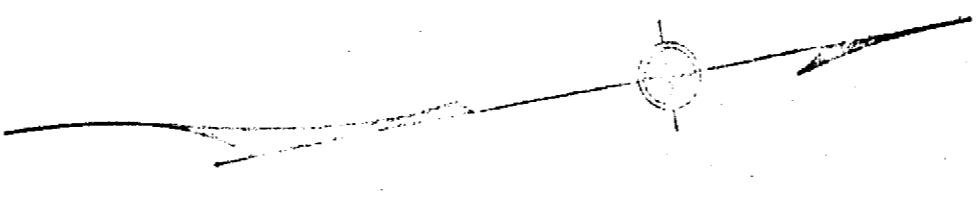


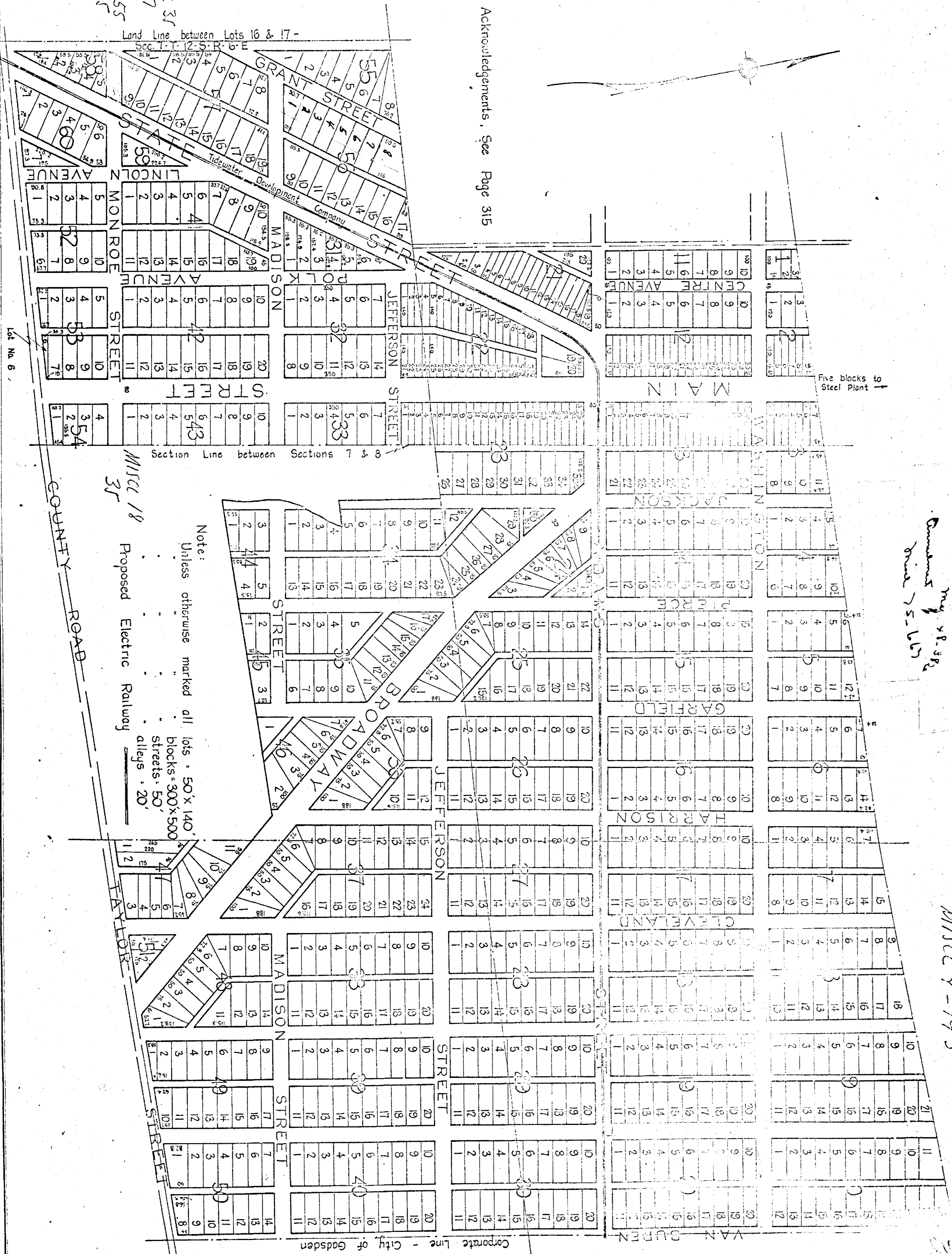
For Acknowledgements, See Page 315



Land Line between Lots 16 & 17 -

1-1-12-5-R-6-E

MISC 35
587
MISC 55
325



Note:
Unless otherwise marked all lots - 50' x 140'
blocks - 300' x 500'
streets - 50'
alleys - 20'

MISC 18
35

COUNTY ROAD

Five blocks to Steel Plant

Commenced May 18, 1892
ended 25, 1897

MISC Y-193

Corporate Line - City of Gadsden