

PLAT OF
HOOKS LAKE ADDITION
SCALE: 1"=100'

I, T. E. Watford, a Civil Engineer & Surveyor who subdivided and surveyed the property contained herein do hereby certify to this as being a true and correct plat of same. Given under my hand this the 24th day of November, 1925.

T. E. Watford
Civil Engineer

I, J. M. Hooks, owner of the property contained herein ratify and adopt this as being a true and correct plat of same. Given under my hand this the 24th day of November, 1925.

J. M. Hooks
Owner

I, T. A. Stringer, a Notary Public in and for said State of Alabama; Etowah Co. certify that before me and for said State and County the property contained herein and T. E. Watford, Civil Engineer, who surveyed the said property, whose names are signed to the foregoing plat and who are known to me, acknowledged before me on this date; that being informed of the contents of this plat they executed the same voluntarily on the day same bears date.

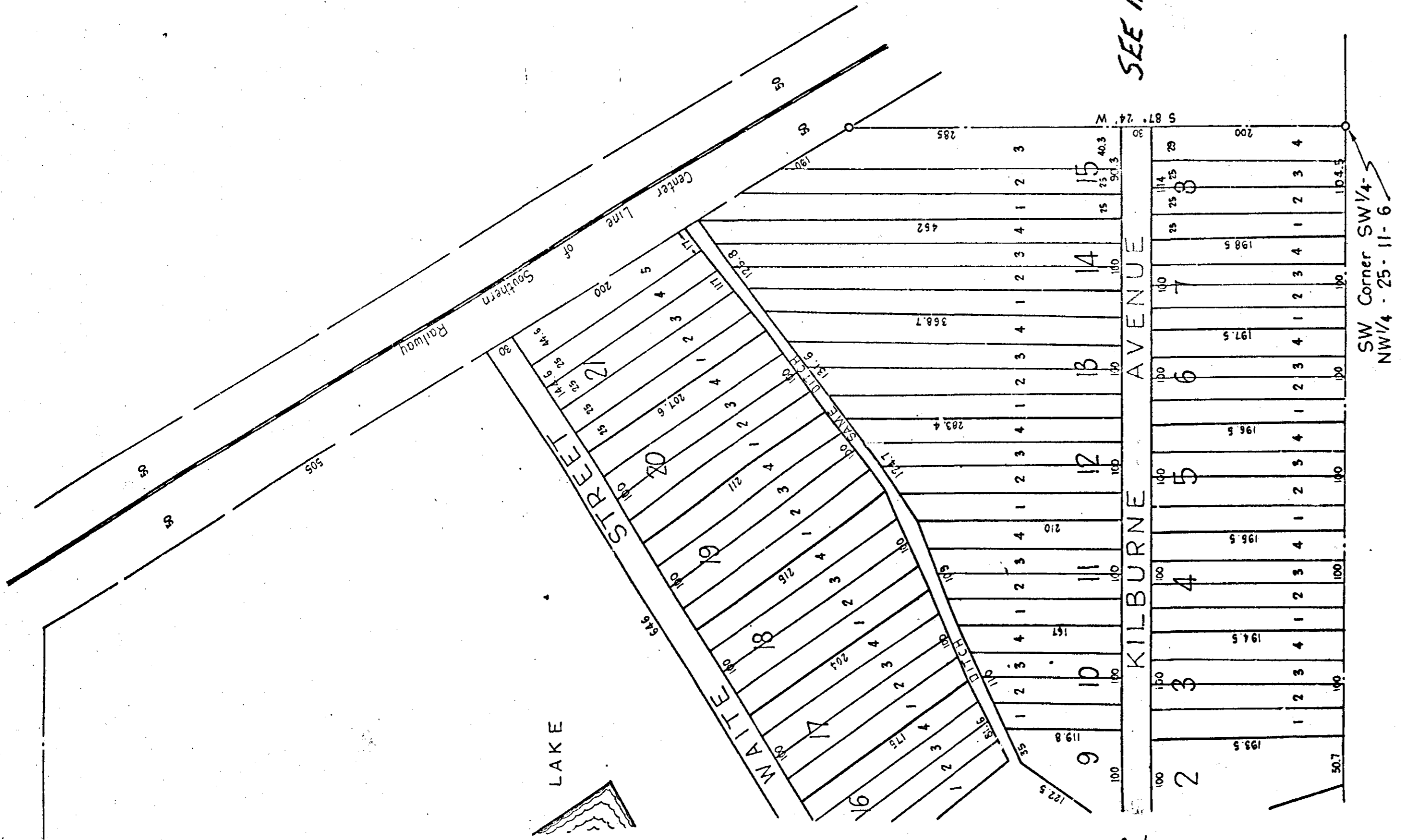
T. A. Stringer
Notary Public

Given under my hand and seal this the 24th day of November, 1925.

Filed in office for record on 27th day of November, A.D. 1925 at 9 o'clock A.M. and recorded the 27th day of November 1925.

H. Ross Gilliland
Judge of Probate

SEE MISC 14-439



See page 294

SW Corner SW 1/4 - NW 1/4 - 25 - 11 - 6