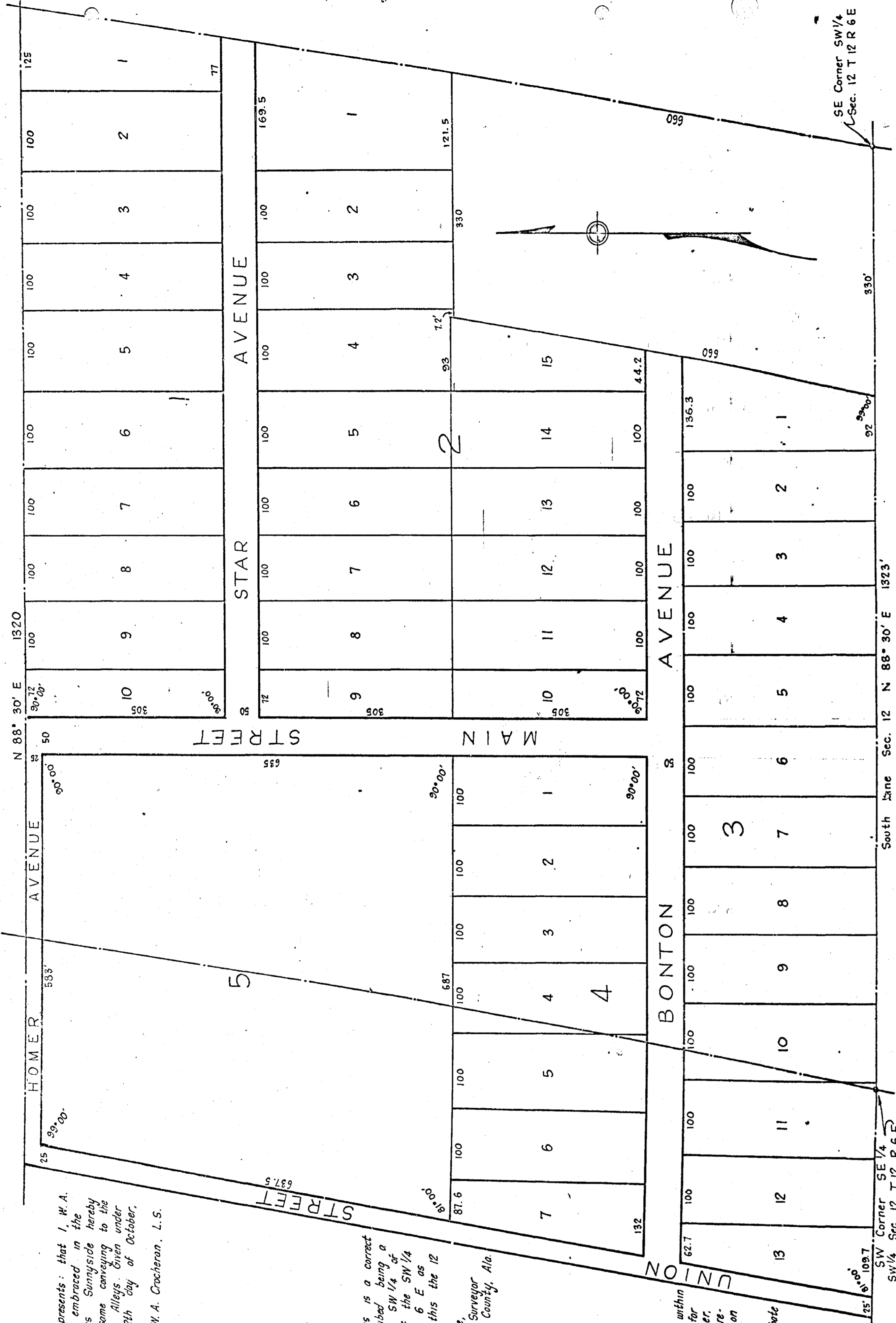


MAP OF
SUNNYSIDE
EAST GADSDEN, ALA.



State of Alabama
Etowah County
Know all men by these presents: that I, W. A. Crocheran, owner of the lands embraced in the within map or plat known as Sunnyside hereby voluntarily adopt and ratify the same conveying to the public use Streets, Avenues and Alleys. Given under my hand and seal, this the 12th day of October, 1910.
W. A. Crocheran, L. S.

I hereby certify that this is a correct map of the lands herein described being a subdivision of a portion of the SW 1/4 of the SE 1/4 and the SE 1/4 of the SW 1/4 of Section 12 Township 12 R 6 E as surveyed and platted by me this the 12 day of October, 1910.
F. G. Lee,
County Surveyor
Etowah County, Ala.

I hereby certify that the within map was filed in this office for record on the 12 day of October, 1910 at 9 o'clock A.M. and recorded in book of town plats on page 277.
J. W. Penn
Judge of Probate

SE Corner SW 1/4
Sec. 12 T 12 R 6 E

SW Corner SE 1/4
Sec. 12 T 12 R 6 E