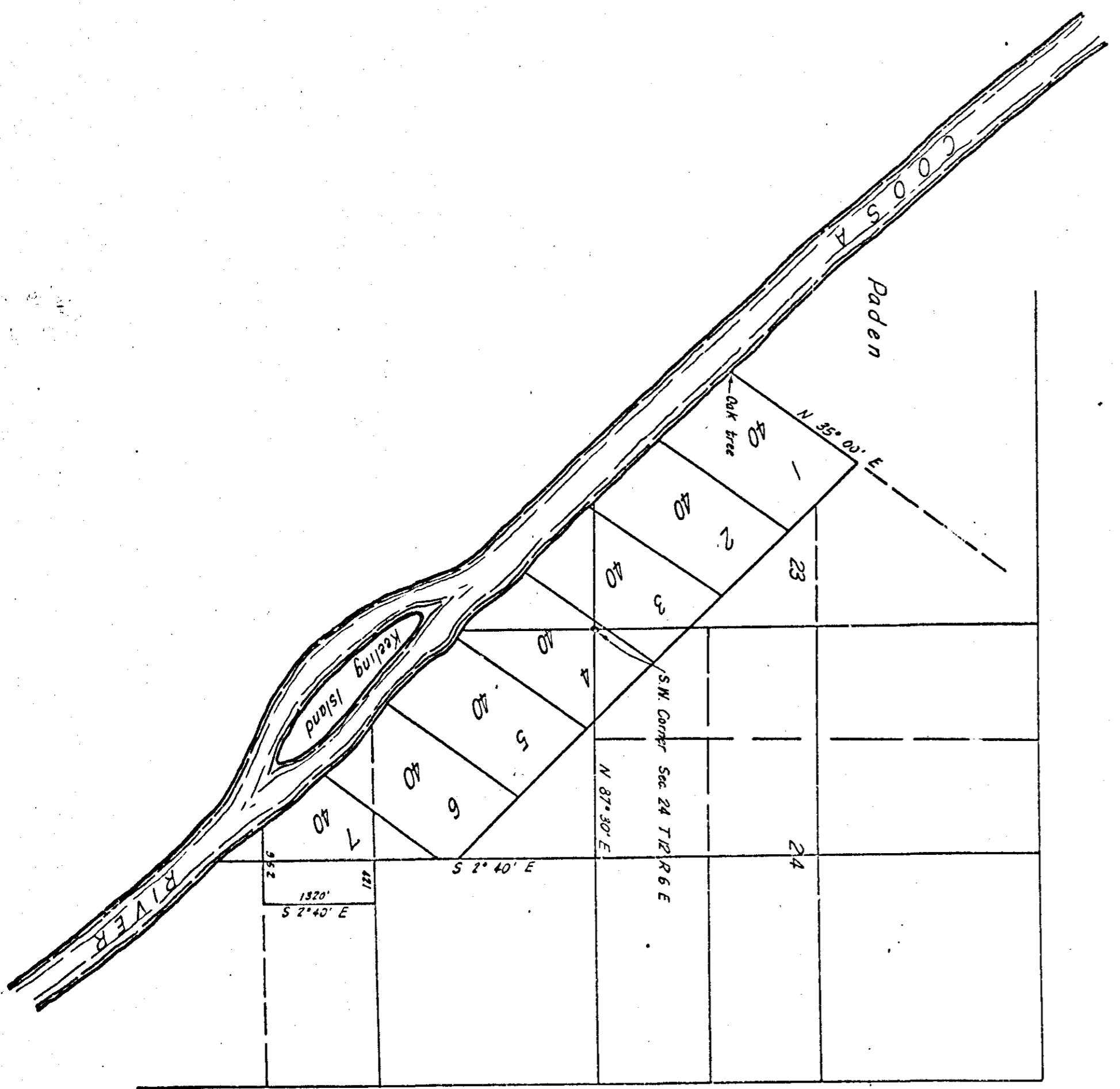


MAP SHOWING
SUBDIVISIONS OF A PORTION OF
E M KEELING LANDS
INTO LOTS FROM 1 TO 7 CONTAINING 40 ACRES EACH
IN SECTIONS 23 24 & 25 T12 R 6 E



To all of which I certify to be correct
as surveyed and platted by me this the 13
day of October, 1909.
F. G. Lee
County Surveyor
Iowa County

Filed in my office for record on the 1st day of
March, 1910 and recorded on this the 11th day of
March, 1910.
J. W. Penn
Judge of Probate