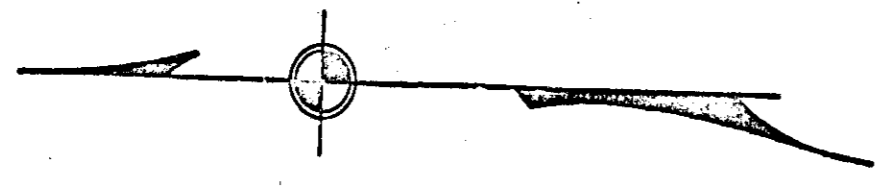
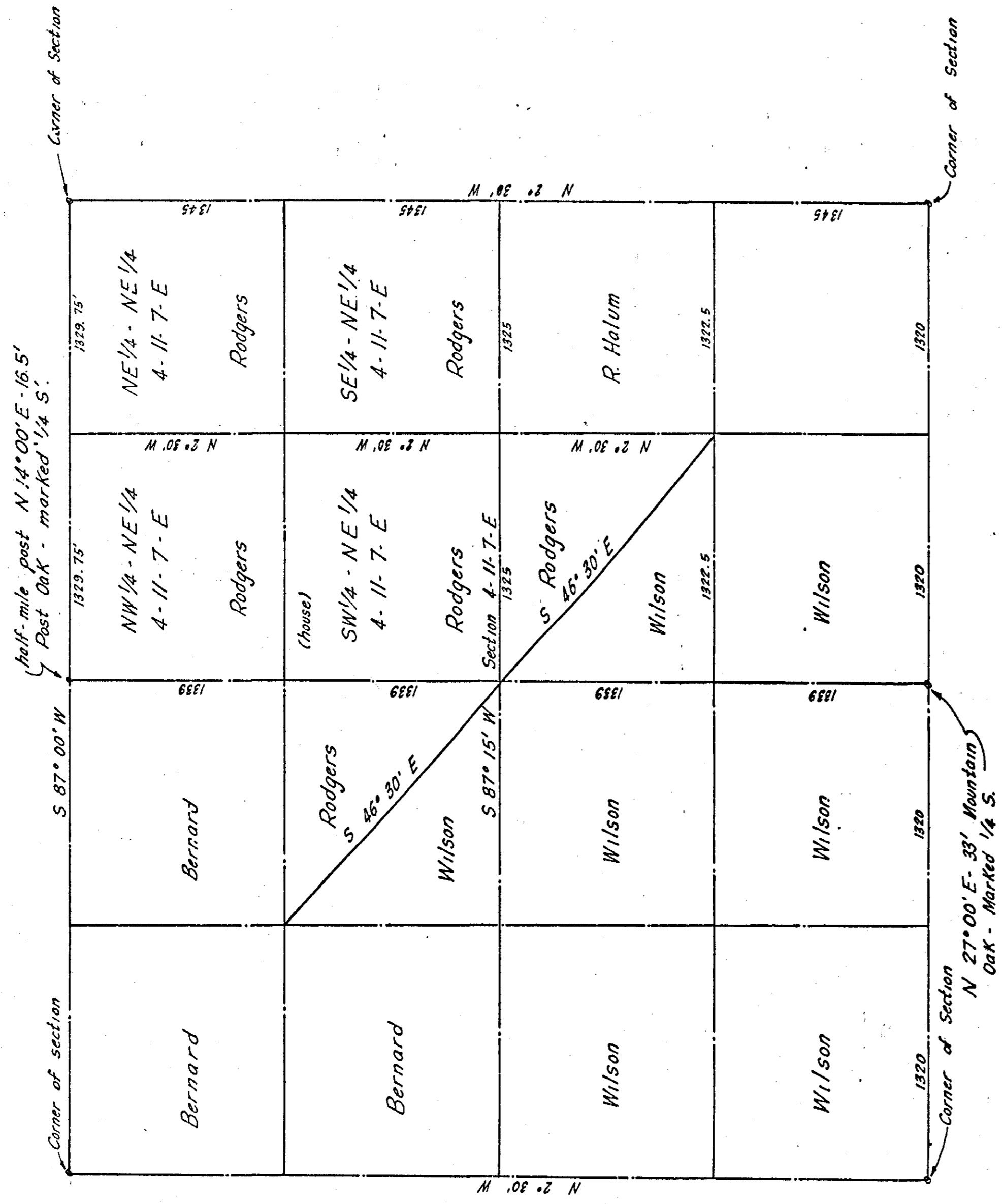


MAP OF
M. C. BROWN LAND
IN OWL'S VALLEY



This survey was made for E. A. Rodgers and
E. H. Wilson, March 6, 1907.
T. W. Kestler
Surveyor

Filed in this office for record on December 4,
1910 and was duly recorded on Plat Book 'B'
page 213, this 5th day of January, 1911.

J. W. Penn