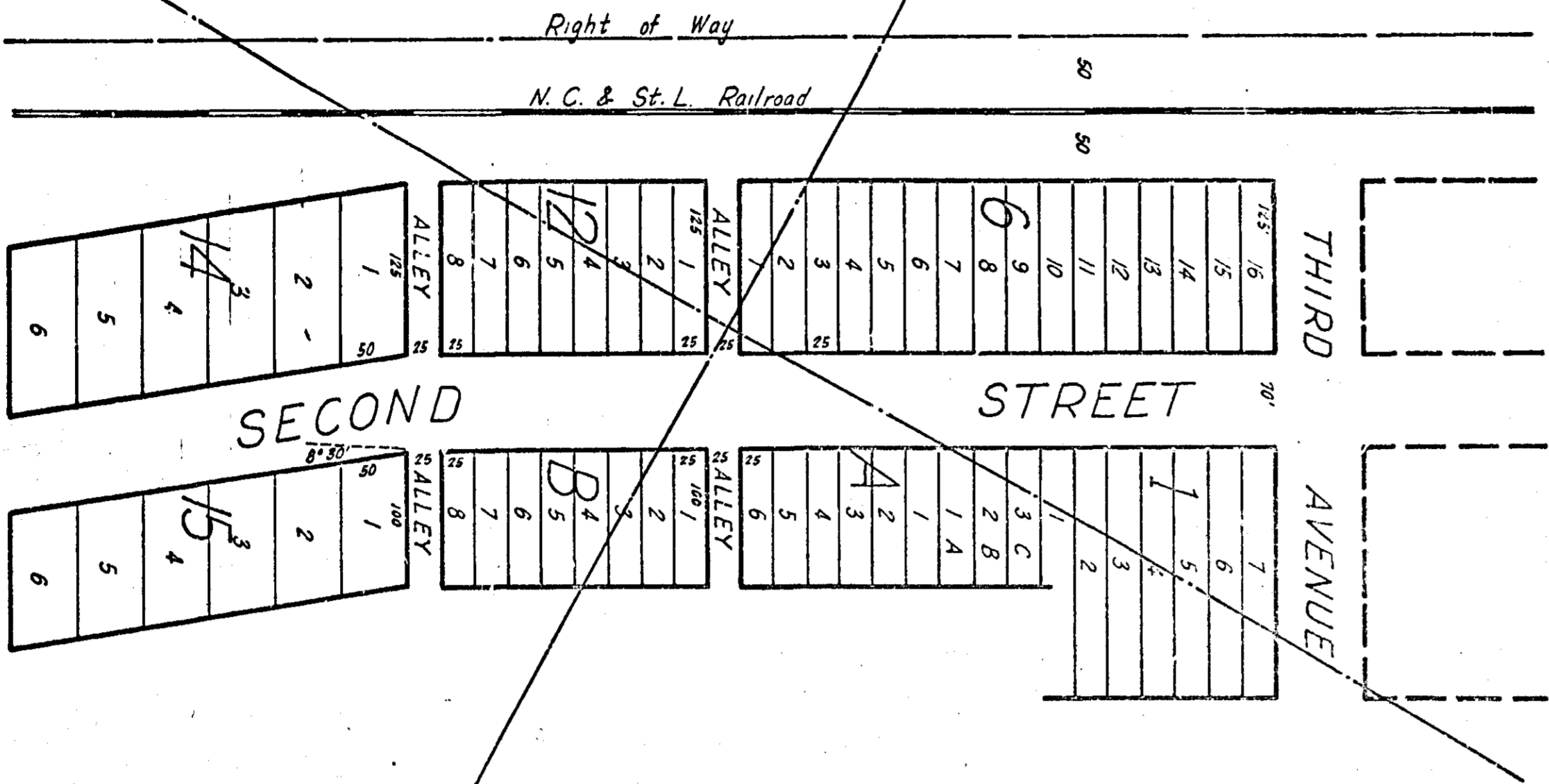


NE 1/4 of SW 1/4
Section 20 T10
Range 6 East

SE 1/4 of SW 1/4
20-10-6



MAP OF
E. TIDWELL ADDITION
TO MOUNTAINBORO, ALA.

JANUARY 25, 1901

C. N. ALFORD, C. E.

SCALE: 1" = 100'

