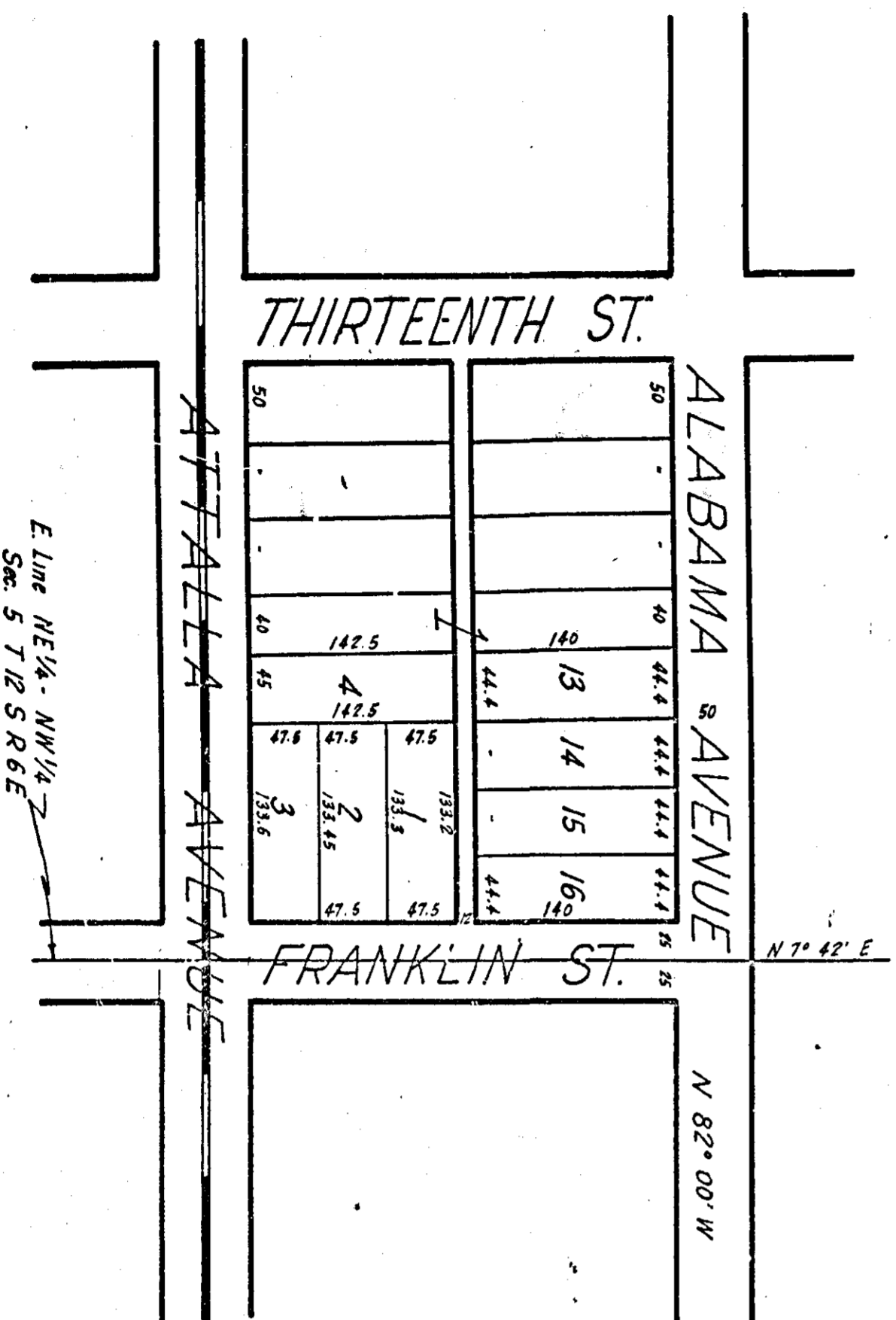


MAP SHOWING  
PADEN & HUGHES' SUPPLEMENT  
TO BLOCK NO. 1 OF  
THE INTERURBAN ADDITION



State of Alabama, Etowah County  
I, hereby certify that the within conveyance  
was filed in office for record August 16, 1926 at  
3 o'clock P.M. and returned in Plat record 879.  
208 and examined.  
H. Ross Gilliland  
Judge of Probate

I, F. G. Lee, a Civil Engineer, who made this map and surveyed the property contained therein, hereby certify that the map is correct that it correctly shows the subdivisions into which the property is divided. It also shows each lot and its number, length and width. It also shows each Street and its name and bearing. It also shows the relation of the lands so subdivided to the Original Government Survey and the undersigned J.S. Paden and Mrs. A. J. Hughes, owners of the property embraced in the said map or plat, hereby ratify and adopt the same as being correct. Given under our hand this the 13 day of August, 1926.

F. G. Lee  
Civil Engineer  
Geo. J. Baker  
Mrs. A. J. Hughes  
Owners

State of Alabama  
Etowah County  
I, H. S. Patterson, a Notary Public in and for said State and County hereby certify that F. G. Lee, whose name as Civil Eng'r., and J.S. Paden and Mrs. A. J. Hughes, owners of the property contained in the within map or plat, and who are known to me acknowledged before me on this day that being voluntarily on the contents of the conveyance, they executed the same voluntarily on the day some bears date.  
Given under my hand this 13 day of August, 1926.

H. S. Patterson  
Notary Public