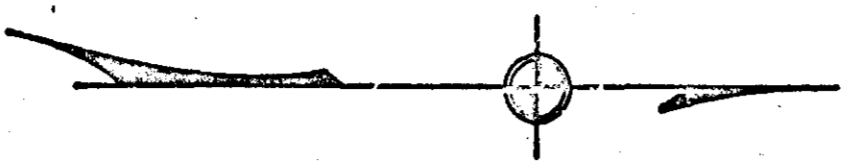
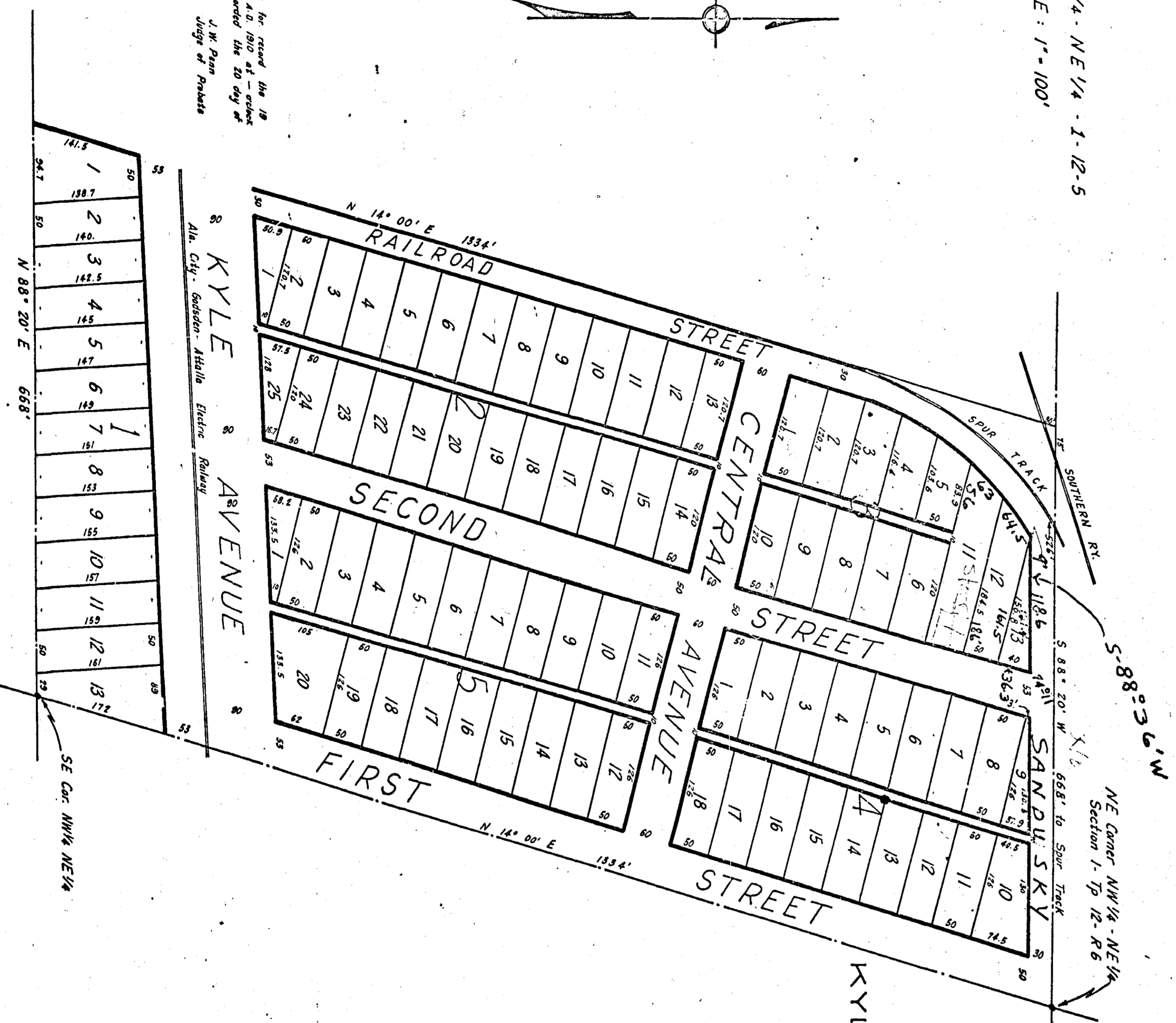


E 1/2 - NW 1/4 - NE 1/4 - 1-12-5
 SCALE: 1" = 100'



Filed in office for record the 18
 day of September, A.D. 1910 at 10 o'clock
 A.M. and of said record the 20 day of
 September, 1910
 J. W. Pann
 Judge of Probate



MAP OF
 KYLE'S CHEAP HOME ADDITION
 TO ALABAMA CITY

State of Alabama
 Etowah County
 I, T. W. Lister, a Civil Engineer, do hereby certify this
 to be a true and correct survey of the property here
 described as surveyed by me on July 20, 1910.
 T. W. Lister
 Civil Engineer

State of Alabama
 Etowah County
 I, R. B. Kyle, on oath, say that I am the owner
 of the lands herein located and hereby certify and
 adopt same as a true and correct description of said
 lands as surveyed and plotted by T. W. Lister, a Civil
 Engineer.
 R. B. Kyle

Sworn to and subscribed before me this the 19th
 day of September, 1910.

C. D. Blackde
 Notary Public