

I, W. Hill, a C.E. & Surveyor, hereby certify this to be correct map of this property as surveyed and subdivided by me; Blocks A, B, C, D & E being the original plat, surveyed and plotted Dec. 21, 1905; Blocks F, G, H, & I being a supplement to the original, made March 21, 1907.

W. Hill

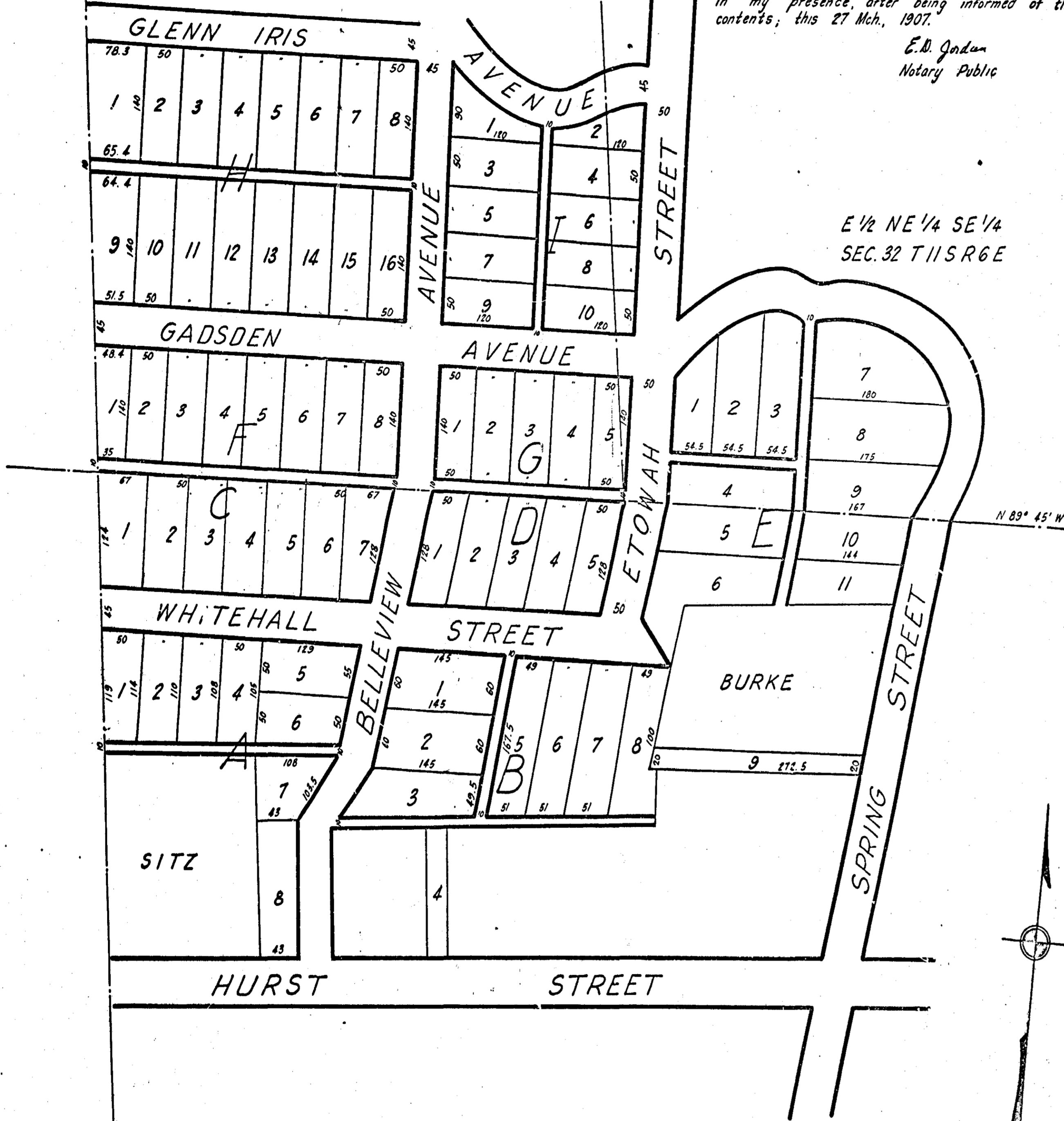
We, S. A. Jordan and S. E. Jordan owners of Blocks F, G, H & I of this Highland Park Add'n, hereby adopt and confirm same. This March, 27, 1907.

S. A. Jordan
S. E. Jordan

I, E. D. Jordan, a Notary Public, hereby certify that S. A. & S. E. Jordan signed the above plat in my presence, after being informed of the contents; this 27 Mch., 1907.

E. D. Jordan
Notary Public

E 1/2 NE 1/4 SE 1/4
SEC. 32 T 11 S R 6 E



HIGHLAND PARK ADDITION
TO GADSDEN ALA

BLOCKS F G H & I ARE A SUPPLEMENT
TO THE ORIGINAL ADDITION MADE MARCH 26, 1907