

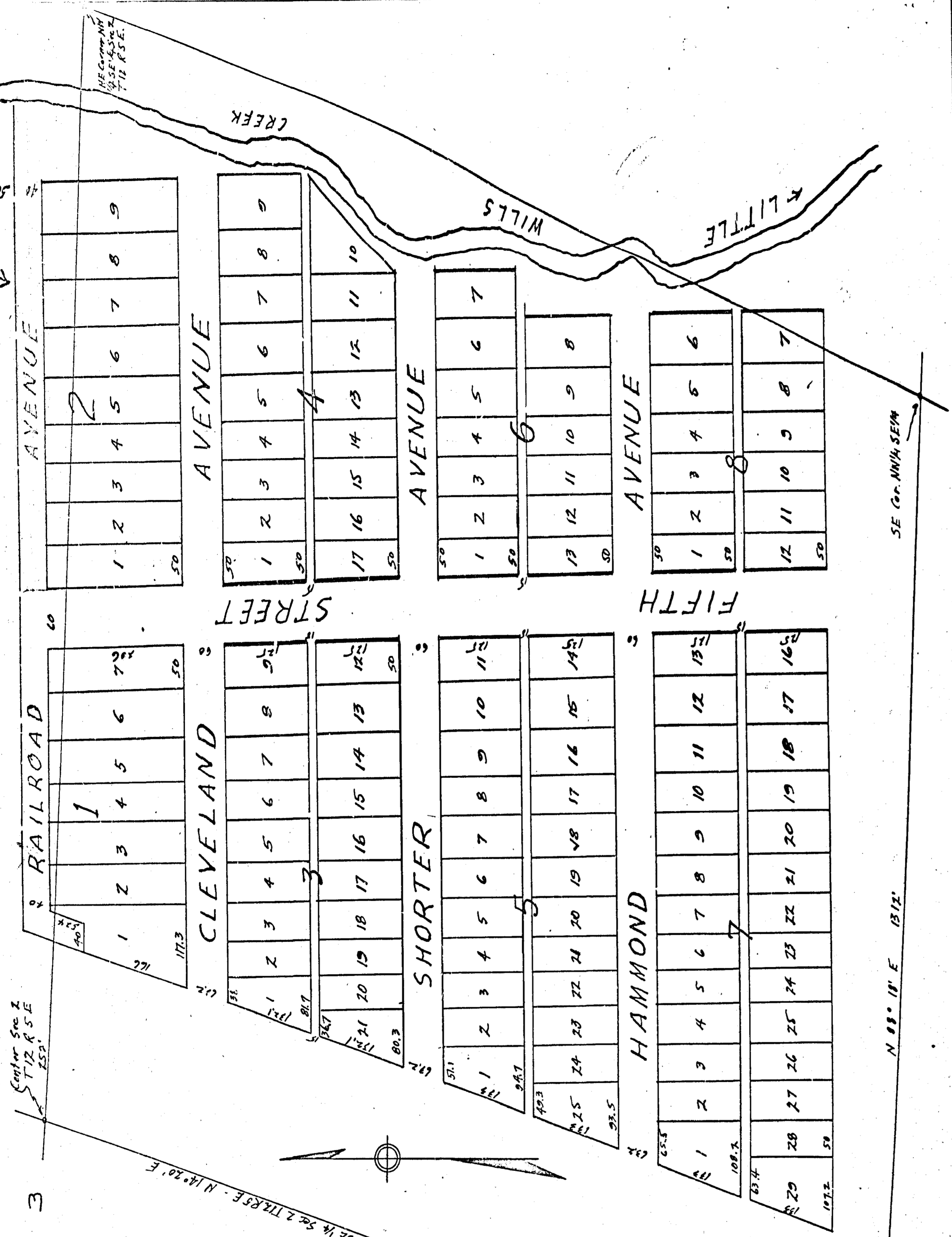
PORTIONS OF SHORTER AVENUE AND HAMMOND AVE. ANNULLED & VACATED-MISC. 123 PAGE 369

Main 76-921

SCALE 1" = 100'
SEE MISC 36-582

FOR AMENDMENT SEE
MISC 35-85

MAP OF REARRANGEMENT OF HUGHES' ADDITION NO. 3 TO ATTALLA, ALA.



I, F. G. Lee, county surveyor who made the map and survey of the property contained herein, hereby certify that the map is correct, that it correctly shows the location and boundaries of each lot and block as well as the streets, avenues and alleys and their widths. It also shows the location of the property so subdivided to the NW 1/4 - SE 1/4 and part of the SW 1/4 of the NE 1/4 Section 2, T12 R5E.

Given under my hand this 26th day of May 1916

F. G. Lee,
County Surveyor, Etowah Co.

State of Alabama
Etowah County

We, the undersigned owners of the property contained therein hereby certify and agree that this map is being correct.

Given under our hand this the 26th day of May - 1916

- G. R. Hughes L.S.
- G. S. Warr L.S.
- G. N. Paul L.S.
- John T. Terry L.S.
- A. S. Williams L.S.
- James A. Williams L.S.
- W. P. Wicks L.S.
- G. T. Young L.S.
- W. E. Young L.S.
- H. A. Warr L.S.
- A. J. Warr L.S.
- R. G. Williams L.S.
- Ed. Lee L.S.

Filed in office for recording the 14th day of May 1916
P. H. Lee
at March 1918
Lt. Auditor of Probate.

Traced by R. B. Burleson County Engineer to 4-4-15