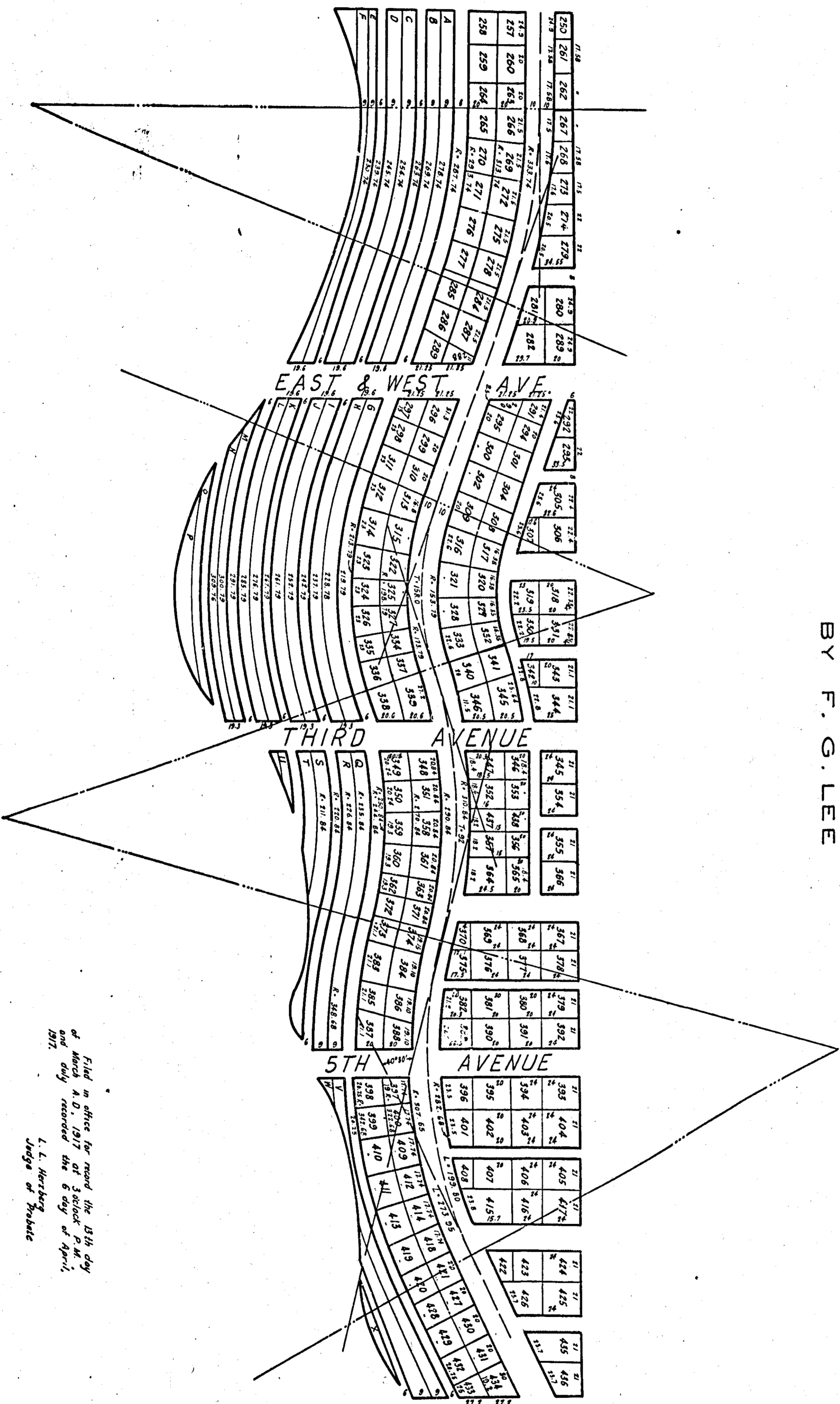


CHESTNUT STREET

MAP OF
FOREST CEMETERY 3RD ADDITION
LOTS 256 - 438 INC.
BY F. G. LEE



Filed in office for record the 13th day
of March A. D. 1917 at 3 o'clock P. M.
and duly recorded the 6 day of April,
1917.
L. L. Herberg
Judge of Probate