

TOWNSHIP 11 SOUTH RANGE 6 EAST
ETOWAH COUNTY, ALABAMA

State of Alabama
Etowah County

We hereby certify that this map shows the correct location of Section 32 Township 11 South Range 6 East in Etowah County, Alabama and that the map is correct; that it correctly shows the subdivisions of said Section together with the angles and distances and that the survey of said Section as made by us on this 18th day of December 1912, is in accordance with the Original Government Survey.

In witness whereof we have hereunto set our hands, this the 19th day of December, 1912.

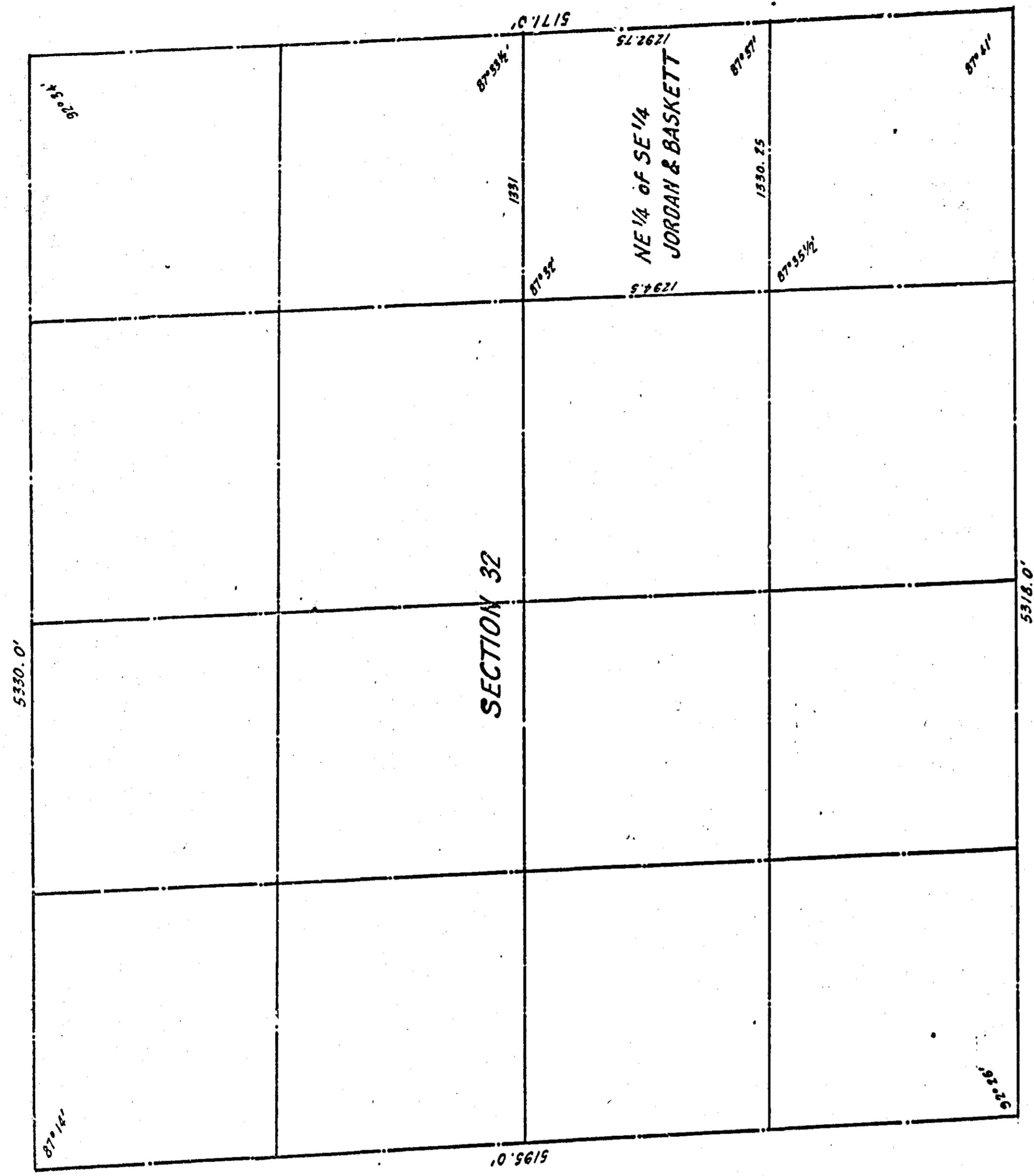
A. G. Dreyfusskamp
Civil Engineer

F. D. Lee
Co. Surveyor - Etowah Co.

State of Alabama
Etowah County

I, Earl Lay, a Notary Public, in and for said County and State, hereby certify that A. J. Grefenkamp and F. G. Lee, Civil Engineers, whose names are signed to the foregoing certificate and who are known to me, acknowledged before me on this day, that being informed of the contents said certificate, they have signed same voluntarily on the day same bears date hereunder my hand and seal this 19th day of December, 1912.

Earl Lay
Notary Public



Filed in office for record on the 7 day
of March, A. D. 1912 at 5 o'clock
P. M. and day renewed authority of
Judge P. P. Hendrix
Notary at Mobile