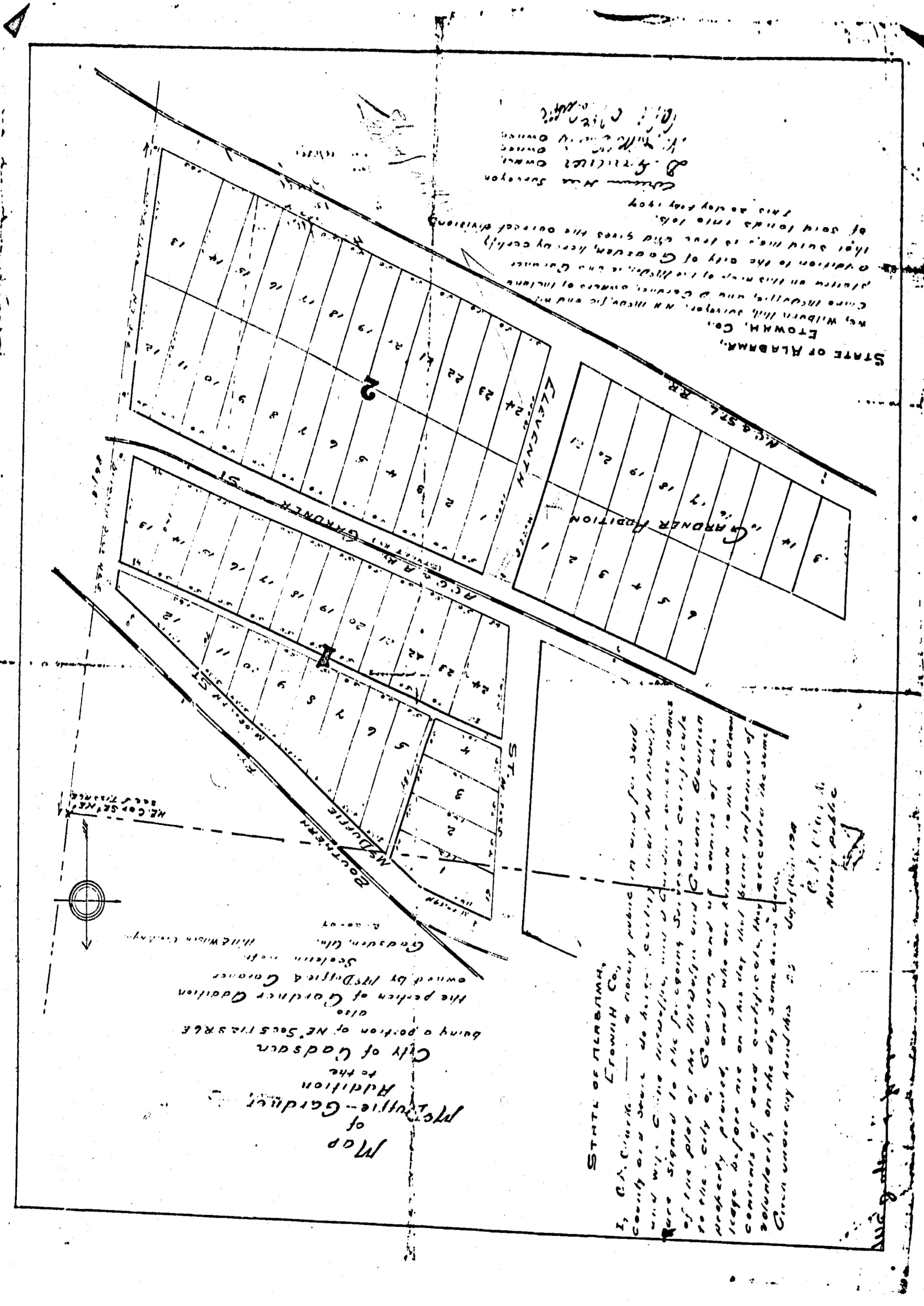


12318

The original plat was made in 1873  
and is now being re-platted  
in 1909



STATE OF ALABAMA,  
ETOWAH CO.,  
J. W. WILSON, Surveyor,  
City of Etowah, Ala.,  
do hereby certify that the  
above plat is a true and  
correct copy of the original  
plat filed in the office of  
the Surveyor in the year  
1909.

STATE OF ALABAMA,  
ETOWAH CO.,  
J. W. WILSON, Surveyor,  
City of Etowah, Ala.,  
do hereby certify that the  
above plat is a true and  
correct copy of the original  
plat filed in the office of  
the Surveyor in the year  
1909.

Map  
of  
Gardner  
Addition  
to the  
City of Etowah  
being a portion of NE 5000 232226  
also  
the portion of Gardner Addition  
owned by Mr. Duffie & Coroner  
Gardner, Ala.  
J. W. Wilson, Surveyor