

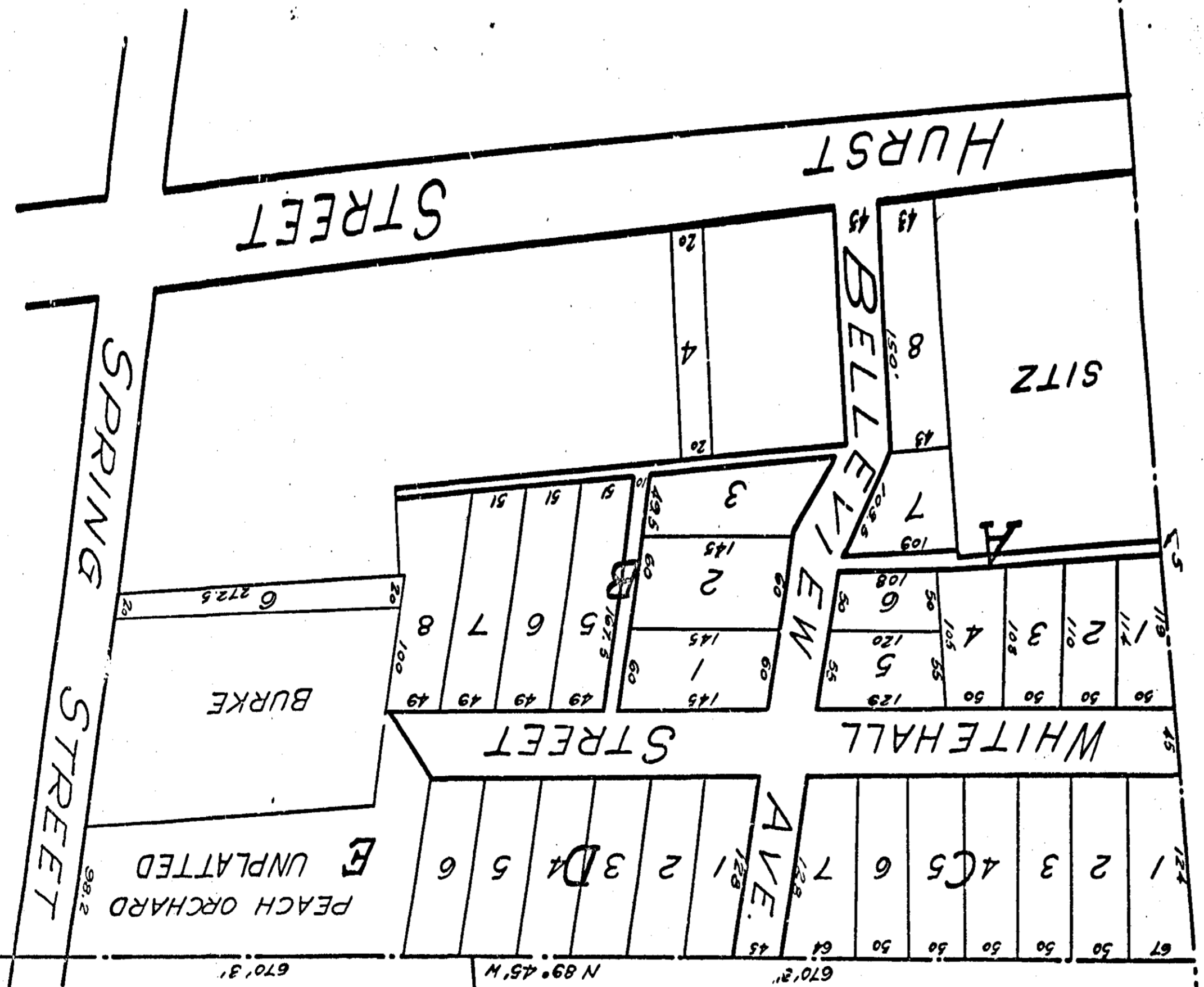
32
33

Township line N 87° 55' E

I, W. Hill, a C. E. and Surveyor hereby certify this to be a correct map of this property as surveyed and subdivided by me, this the 21st day of December, 1905.
W. Hill, C.E.
Gadsden, Ala.

SCALE: 1" = 100'

HIGHLAND PARK ADDITION
TO GADSDEN, ALA.



Filed in office for record the 8 day of
March, A. D. 1906 at 3:00 o'clock
P. M. and duly recorded the day of
19 in Plat record, page 40.
W. Hill
Judge of Probate

E 1/2 NE 1/4 SE 1/4
SEC 32 T11 R6E

12657

12961

13165

